



# Regional Active Transportation Master Plan

Project Working Group (PWG) Meeting #1  
Tuesday, September 23, 2025



South Jersey  
Transportation  
Planning Organization

# Agenda

- 1 Introductions
- 2 Regional Active Transportation Master Plan (ATP) Purpose and Goals
- 3 About the SJTPO Region
- 4 PWG Member Roles and Responsibilities
- 5 ATP Development Schedule
- 6 Goal Setting Exercise
- 7 Public Outreach Plan (POP) Overview
- 8 Existing Conditions Review
- 9 Discussion, Questions, and Wrap-Up



# Introductions



South Jersey  
Transportation  
Planning Organization



**You!**

**The Project Working Group  
(PWG)**

# ATP Purpose and Goals

- **Address critical gaps** in the regional active transportation network.
- **Promote accessibility and mobility** for the movement of people and goods.
- **Support the regional economy.**
- **Increase and enhance** opportunities for **travel and tourism.**
- **Improve transportation safety.**
- **Establish** the framework for **a unified bicycle and pedestrian count program.**
- **Build upon opportunities identified** in other recent transportation-related plans and initiatives in the region.

With all of this, advance the goals of SJTPO's Regional Transportation Plan, *Forward2050*.

# About the SJTPO Region

## 4 Counties

Atlantic  
Cape May  
Cumberland  
Salem



**1,662.25**  
Square miles



**589,300**  
Residents



**66.98**

Annual avg. vehicle  
miles traveled per  
household  
(statewide 54.93)

**363.26**

Persons per square  
mile.

In order of density:  
Atlantic, Cape May,  
Cumberland, Salem

**15.4%**

Speaks Spanish

**42.1**

Median age  
(statewide is 40.4)

**\$73k**

2022 median  
household income  
(statewide \$96.3k)



South Jersey  
Transportation  
Planning Organization



# PWG Member Roles and Responsibilities

- **Identify other stakeholders** like community groups.
- Help us **reach the most vulnerable populations**.
- **Be an advocate** of this study.
- **Provide input** on our analysis of regional data, public engagement, and existing active transportation infrastructure.
- Review and **give feedback on the draft ATP** and implementation matrix.
- **Attend** two (2) subsequent **meetings** as part of the above.

# ATP Development Schedule

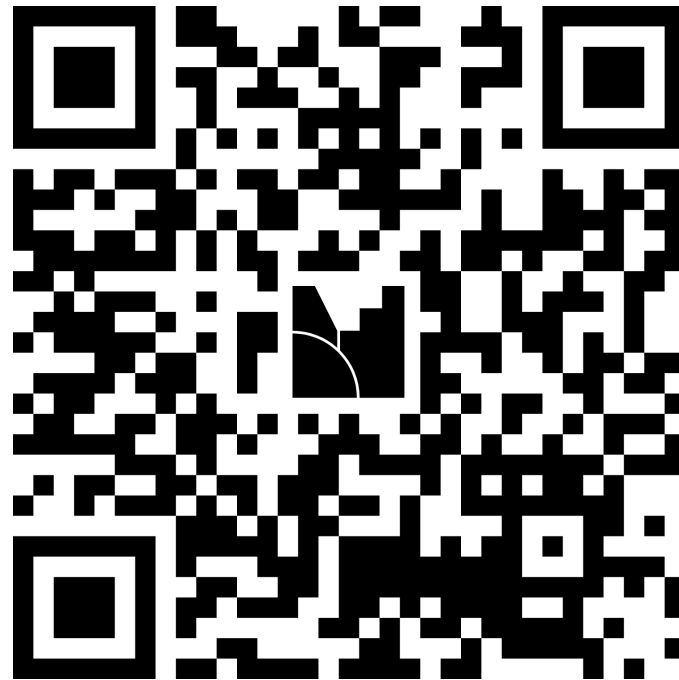
◆ Deliverable  
■ Key Meeting

Task	Summer 2025			Fall 2025			Winter 2025/26			Spring 2026			Summer 2026			Fall 2026		
	Jun	Jul	Aug	Sep	Oct	Nov	Dec	Jan	Feb	Mar	Apr	May	Jun	Jul	Aug	Sep	Oct	Nov
1- Coordination & Administration																		
2- Review Existing Policies & Equity Assessment						◆												
3- Data Collection & Existing Conditions								◆										
4- Public & Stakeholder Outreach					■			◆		■						■		
5- Findings & Recommendations										◆			◆	◆		◆	◆	
6- Draft & Final Plan													◆				◆	
7- Bicycle & Pedestrian Count Program													◆		◆	◆		
8- Technical Assistance & Grant Apps									◆					◆		◆		

# Goal Setting Exercise

Join at: [menti.com](https://menti.com) with the code 5317 3874

Or scan the QR code:



# POP Overview

## Outreach through promotion and online engagement:

- Public survey (incl. Spanish version)
- Email listservs
- Social media posts
- SJTPO website
- County websites

**Will identify communities in the SJTPO region that have underserved populations and tailor outreach accordingly.**



# POP Overview

## Awareness & Learning



## Solicit Feedback



## Collaborate

### Public survey + 3 targeted outreach sessions:

1. Raise awareness of the plan development
2. Discuss how to be involved in the planning process
3. Learn about the issues/challenges facing the plan are today and in the future

Initial ideas include attending an existing community event. Suggestions welcome.

**Timeframe: Fall 2025-Spring 2026**

Present and solicit comments and feedback on the proposed ATP regional active transportation network via an **in-person mapping exercise at the New Jersey Bike & Walk Summit 2026**

**Timeframe: Spring 2026**

**Share the draft study** with the public through a public meeting to collaborate on the final recommended network.

**Timeframe: Fall 2026**

# POP Overview

## Awareness & Learning: Community Events

Based on initial research, potential community events include:

- Italian Festival (Galloway), 9/27
- Lighthouse Challenge of New Jersey (Cape May Point), 10/18-10/19
- Autumn Exit Zero Jazz Festival (Cape May), 11/7-11/9
- Atlantic County Planning Advisory Meeting (Northfield), 10/1

Any suggestions for other community events to attend?

# ALICE Assessment

## **Asset Limited, Income Constrained, Employed**

- Working households earning above poverty but struggling to afford basics
- Often one emergency away from financial crisis

**ALICE Threshold:** Minimum income for survival adjusted by household size, type, and county.

## **Household Survival Budget**

- Housing • Childcare • Food • Transportation • Healthcare
- Basic Technology • Taxes • +10% contingency

# ALICE Assessment

## Household Budget

Housing



Child Care



Health Care



Technology



Food



Transportation



Taxes



Miscellaneous



### ALICE Budget and Income Status, Selected Counties, New Jersey

Categories	Monthly Costs and Credits
Housing	\$1,223
Child Care	\$0
Food	\$494
Transportation	\$366
Health Care	\$588
Technology	\$86
Miscellaneous	\$276
Taxes	\$486
Monthly Total	\$3,519
ANNUAL TOTAL	\$42,228
Hourly Wage	\$21.11

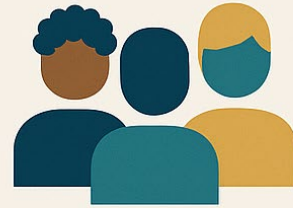
Sample Household: 1 senior living alone

# ALICE Assessment

County	% ALICE	% Below FPL
Atlantic	34%	12%
Cape May	30%	8%
Cumberland	40%	17%
Salem	33%	12%
State Average	29%	10%

# ALICE Assessment

- Additional factors are being used to tailor outreach and engagement efforts
- Ensuring we have a full view of a community's residents to increase involvement
- Aligns with other recent SJTPO plans



**RACE & ETHNICITY**



**AGE**



**DISABILITY**



**LIMITED ENGLISH PROFICIENCY**



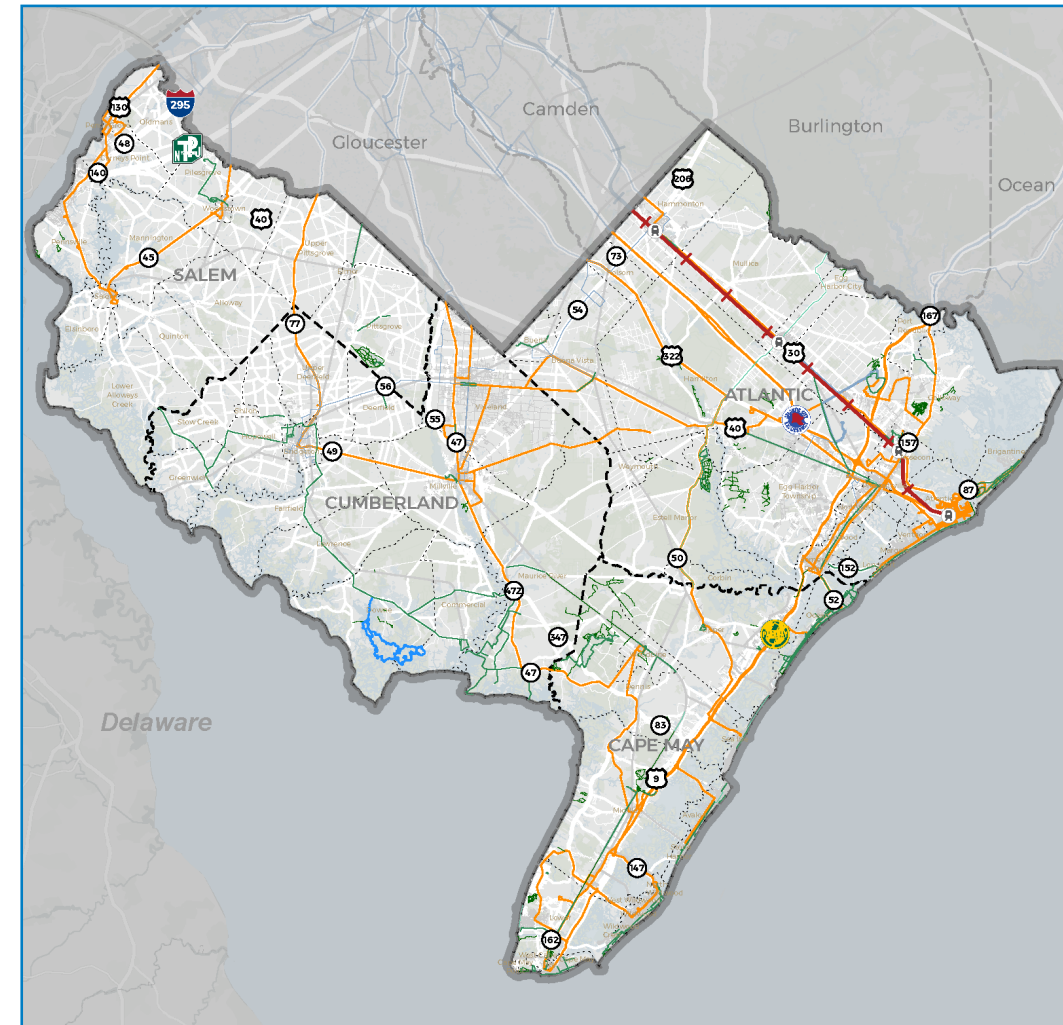
**ZERO VEHICLE HOUSEHOLDS**



**ALICE HOUSEHOLDS**

# Existing Conditions

- SJTPO Base Map



Credits: SJTPO, NJ GIN, NJ TRANSIT, NJDOT, US Census Bureau

Date: 8/19/2025



..... Administrative Boundary	— Bicycle Network	Ⓜ Train Stations
■ Open Space	— Trail (On-road)	—+ Atlantic City Line
■ Water Body	— Trail (Off-road)	— Bus Lines
	— Trail (Water)	

# Existing Conditions – Literature Review

- Review of supporting plans, policies, and guidance
  - Identify existing Active Transportation needs, problems, network gaps
  - Address safety issues
  - Support development of regionwide, interconnected network
  - Draft technical memorandum to be available soon for review
- Review and summary includes
  - South Jersey Trails Design Guide, 2023
  - Atlantic County Bikeway West Feasibility Study, 2021
  - Maurice River Corridor Study, 2024
  - Regional Trail Network Feasibility Study – Cape May, 2024
  - Camden County LINK Trail
  - Cumberland County Bike-Ped Safety Action Plan, 2022
  - Town of Hammonton Bicycle & Pedestrian Master Plan, 2021

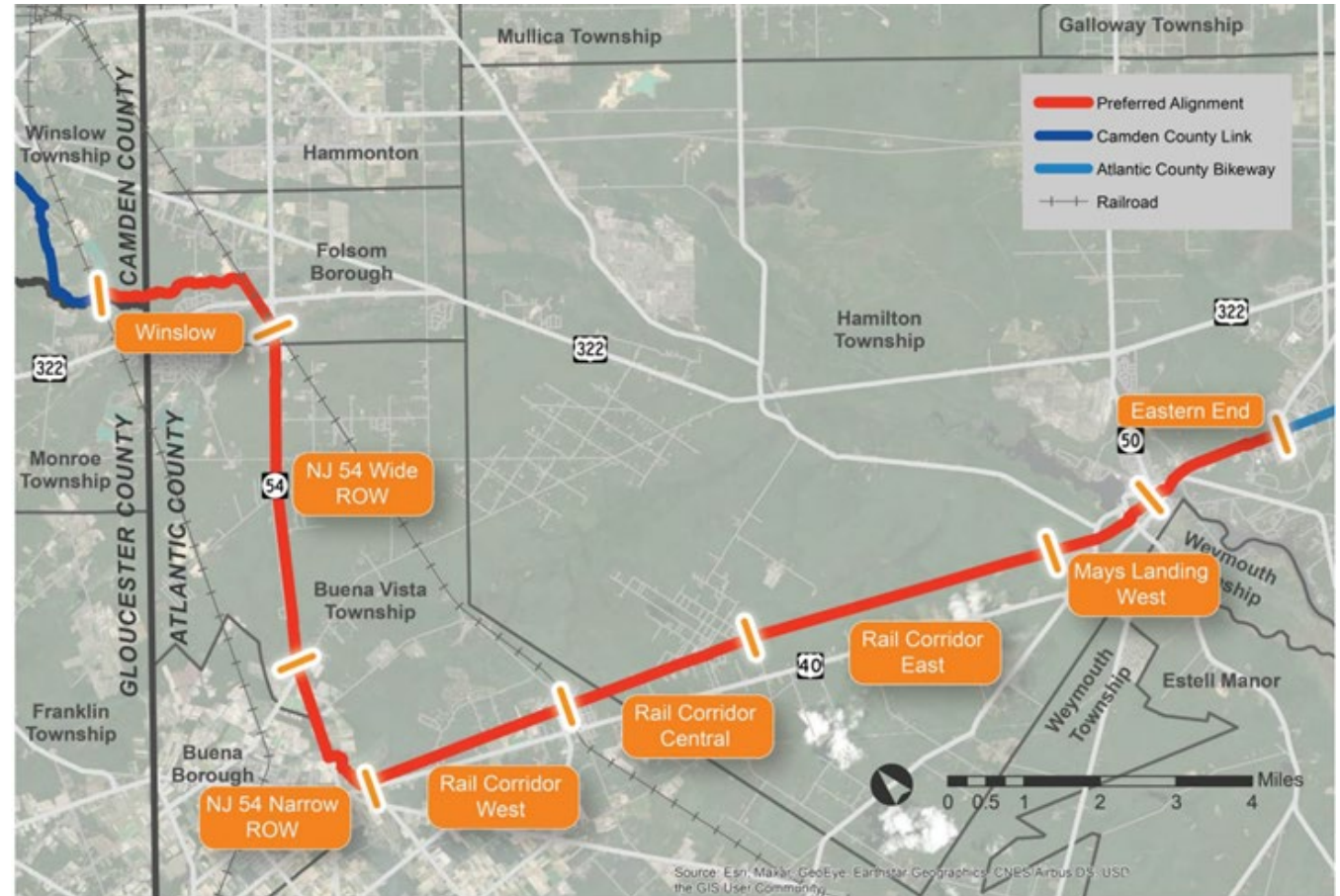
# Bike Walk Cape May (2017)

- Local bike and walk network
  - Bicycle lanes
  - Bicycle boulevards
  - Shared lane markings
  - Trails
  - Pedestrian improvements
- Connect people to destinations, activities
- Speed limit reductions
- Expand the existing bike and walk network



# Atlantic County Bikeway West Feasibility Study (2021)

- Regional Network  
Connections: Camden County to Atlantic County
- Build on existing and proposed trails and bikeways
- Identifies amenities to support and enhance bikeway use
- Phased plan with cost estimates and maintenance needs



Map 4.8: Potential Cost/Phasing Segments

# Next Steps

Existing Conditions:  
Inventory and  
Assessment

Community Outreach  
Events

Initiate  
Candidate Active  
Transportation  
Network

**PWG Meetings 2 and 3**

To be scheduled for Spring and Fall 2026

**Community Meetings**



*Thank you!*



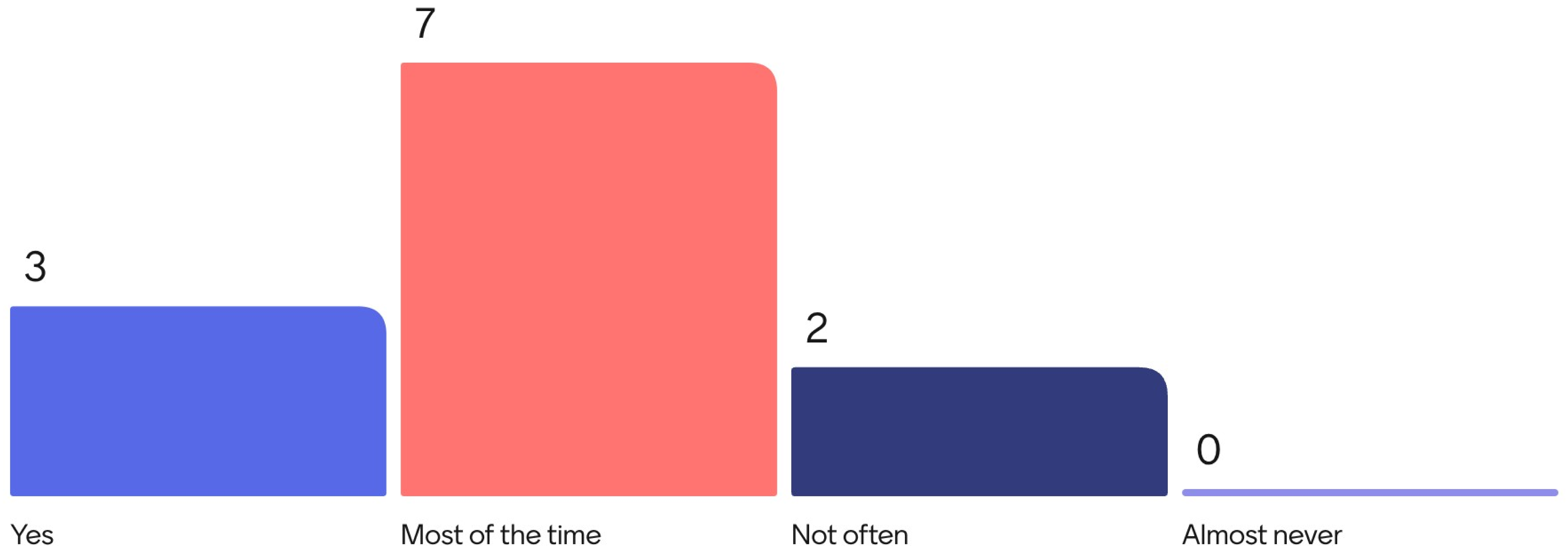
# Discussion and Questions

Project Working Group (PWG) Meeting #1  
Tuesday, September 23, 2025



South Jersey  
Transportation  
Planning Organization

Can you safely and efficiently get to where you need to go in Atlantic, Cape May, Cumberland, and Salem Counties?



# What would make your travel better?

More access to public transportation

Greater & safer connectivity across county or municipal lines

Safe and connected places to bike

shared used paths to major destinations

Complete connections.

Improved sidewalks and curbs,

Safety barriers for bike paths

More complete route via active modes.

# What would make your travel better?

Access to safe places to bike that more connected

Improved bus stops with ada accessibility

Relocated from Florida - they had numerous bike lanes on most streets which increased that mode of transportation.

Safe alternatives to driving, better ped improvements - marked crosswalks

Safe crossings at all bus stops

Addressing safety for all road users

Separated from traffic connected to resources.

What is your vision for how active transportation—like walking, biking, and transit—should evolve in the region?

