



## Safety Benefits:

# 13%

reduction in pedestrian-vehicle crashes at intersections.<sup>2</sup>

## Leading Pedestrian Interval

A leading pedestrian interval (LPI) gives pedestrians the opportunity to enter the crosswalk at an intersection 3-7 seconds before vehicles are given a green indication. Pedestrians can better establish their presence in the crosswalk before vehicles have priority to turn right or left.

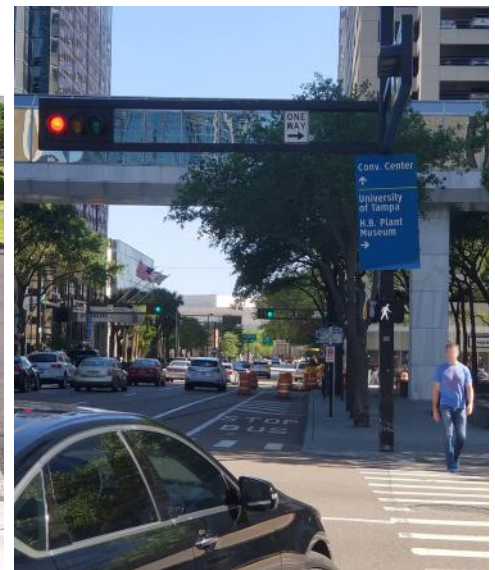
### LPIs provide the following benefits:

- Increased visibility of crossing pedestrians.
- Reduced conflicts between pedestrians and vehicles.
- Increased likelihood of motorists yielding to pedestrians.
- Enhanced safety for pedestrians who may be slower to start into the intersection.

FHWA's Handbook for *Designing Roadways for the Aging Population* recommends the use of the LPI at intersections with high turning vehicle volumes. Transportation agencies should refer to the *Manual on Uniform Traffic Control Devices* for guidance on LPI timing and ensure that pedestrian signals are accessible for all users.<sup>1</sup> Costs for implementing LPIs are very low when only signal timing alteration is required.



An LPI allows a pedestrian to establish a presence in the crosswalk before vehicles are given a green indication. Source: FHWA



LPIs reduce potential conflicts between pedestrians and turning vehicles. Source: FHWA

For more information on this and other FHWA Proven Safety Countermeasures, please visit <https://highways.dot.gov/safety/proven-safety-countermeasures> and <https://highways.dot.gov/sites/fhwa.dot.gov/files/2022-06/fhwasat19040.pdf>.

<sup>1</sup> Manual on Uniform Traffic Control Devices (MUTCD), Section 4I.06. FHWA, (2023).  
<sup>2</sup> (CMF ID: 9918) Goughnour, E., D. Carter, C. Lyon, B. Persaud, B. Lan, P. Chun, I. Hamilton, and K. Signor. "Safety Evaluation of Protected Left-Turn Phasing and Leading Pedestrian Intervals on Pedestrian Safety." Report No. FHWA-HRT-18-044. Federal Highway Administration. (October 2018)