

SOUTH JERSEY TRANSPORTATION PLANNING ORGANIZATION  
**REGIONAL TRAIL NETWORK –**  
**FEASIBILITY STUDY-**  
**CAPE MAY COUNTY**  
UPPER AND DENNIS TOWNSHIPS, NEW JERSEY



**Prepared For:**

**SJTPO**  
817 East Landis Avenue, 2<sup>nd</sup> Floor  
Vineland, New Jersey 08360

**Submitted By:**

**Pennoni Associates, Inc.**  
515 Grove Street  
Suite 1B  
Haddon Heights, NJ 08035

A handwritten signature in blue ink, appearing to read 'Chad Gaulrapp', is written over a horizontal line.

Chad Gaulrapp, PE, CME  
New Jersey License #24GE04135000

Proj. No. SJTPO21002  
April 2024

# TABLE OF CONTENTS

<b>1.0 INTRODUCTION .....</b>	<b>3</b>
1.1 LOCATION.....	3
1.2 PREVIOUS STUDIES .....	5
1.3 TRAIL CHARACTERISTICS.....	5
<b>2.0 PLANNING PROCESS.....</b>	<b>10</b>
2.1 STUDY TEAM .....	10
2.2 PUBLIC OUTREACH .....	10
<b>3.0 TRAIL ROUTING ANALYSIS .....</b>	<b>12</b>
3.1 EXISTING CONDITIONS INVENTORY .....	12
3.2 ENVIRONMENTAL CONSIDERATIONS .....	24
3.3 PRELIMINARY TRAIL ALIGNMENTS.....	26
<b>4.0 CONCEPT PLAN.....</b>	<b>30</b>
4.1 TRAIL ALIGNMENTS .....	30
4.2 TRAILHEADS.....	32
4.3 OPINION OF CONSTRUCTION COST.....	35
<b>5.0 NEXT STEPS .....</b>	<b>37</b>
5.1 FOCUS SEGMENT 1 – Beesley’s Point Trailhead to Trail Connection with Peach Orchard Road .....	37
5.2 FOCUS SEGMENT 2 – Trail Connection with Peach Orchard Road to Dennis Township Trailhead .....	37

## APPENDICES

- Appendix A:** Trail Parcels
- Appendix B:** JPPM Meeting Summary Memorandum
- Appendix C:** NHP Reports
- Appendix D:** Trail Planning Opinion of Cost
- Appendix E:** Public Meeting Announcements



## 1.0 INTRODUCTION

On behalf of the Cape May County Planning Department, the South Jersey Transportation Planning Organization (SJTPO) engaged Pennoni Associates to identify and evaluate feasible routing for the Northern Cape May County Trail; an off-road, multi-use trail that is consistent with the high-quality experience found on other trails in Cape May and Atlantic Counties that will serve all ages and abilities. The purpose of this effort is to identify and evaluate a right-of-way (ROW) for a northern bikeway in Cape May County that would connect the new Garden State Parkway Bridge to the north with the Cape May County trails system to the south.

The ultimate vision is a trail system connecting Philadelphia with Ocean City. This effort evaluates the feasibility of connecting Cape May's extensive network to that greater system, with a goal of connecting Philadelphia and Cape May via off-road trail facilities for a total of 105 miles.

### 1.1 LOCATION

In association with Lomax Consulting Group and Rodriguez Consulting LLC, Pennoni Associates, Inc. was hired to conduct the feasibility study for a nine-plus mile gap of the Cape May County Trail between the new Garden State Parkway Bridge at Beesley's Point and the planned trail connecting southerly to the existing 17.2 miles regional trail. The trail segment traverses through Upper Township into Dennis Township.



Figure 1. Regional Trail Network

Data Sources: NJGIS

The goal of this study is to recommend the most favorable alignment for the trail segment and outline the steps for implementation based on an analysis of property rights-of-way, probable cost of construction, potential physical obstacles and conflicts, planning and environmental constraints, public outreach, connections to civic destinations and modes of travel, and other factors.

In recent years, Cape May County has engaged in extensive efforts to greatly expand its countywide trails system through its Open Space Program. The existing Cape May County bikeway is located along dedicated portions of roadways in some locations, but is primarily confined to former railways and existing utility rights-of-way to maximize the use of these linear byways for connectivity. In some limited locations easements across private lands were secured where necessary. However, it is the intent of this study is to leverage the use of former railroad infrastructure and existing utility and transportation rights-of-way where feasible to achieve an off-road trail connector which reduces reliance upon private land easements, minimizes disturbance to environmentally sensitive lands, and retains the travel experience and safety considerations inherent to the existing bikeway.

This feasibility study analyzed multiple factors along the potential trail corridors within the defined study area, and examines how current conditions and potential future developments may influence the establishment of a current preferred alignment that can proceed to implementation. The factors assessed within this study include:

- Appropriate connection points to adjoining planned or constructed trails;
- Conflict points between the trail and other modes of transit, such as roadway and rail intersections and bridges;
- Connections to nearby civic destinations such as schools, parks, workplaces, and town center business districts;
- Synergy with existing buildings/structures proximal to the trail right-of-way;
- Environmental constraints, such as streams, flood plains, wetlands and sensitive habitats, and impacts minimization;
- Utility impacts such as water, sanitary sewer, gas, aerial and below grade electric and telecom; and
- Right-of-way analysis to determine which properties will be impacted and the most feasible strategy for acquisition of easements that may be needed. This includes analysis of existing rail rights-of-way.

The above was performed with consideration for the need for trail amenities such as trailheads, restroom facilities, lighting, physical barriers, wayfinding measures, drainage systems, emergency vehicle access, and ADA compliance.

A Joint Permit Processing Meeting was conducted with the New Jersey Department of Environmental Protection (NJDEP), New Jersey Pinelands Commission (NJPC) and the United States Army Corps of Engineers (USACE) to aid in setting the criteria for preferred bikeway route selection and establishing information and design requirements for future permitting considerations.

A key goal of this study was to raise public awareness and support of the trail system. This was accomplished through creation of an informational portal on the SJTPO website [www.sjtpo.org/capemaycotrailconnector](http://www.sjtpo.org/capemaycotrailconnector); distribution of a flyer with project information, contact information, informational website address, and upcoming workshop dates; a virtual public presentation; and an in-person town hall meeting. Additional details related to the public outreach process can be found within Section 2.2 of this document.

## 1.2 PREVIOUS STUDIES

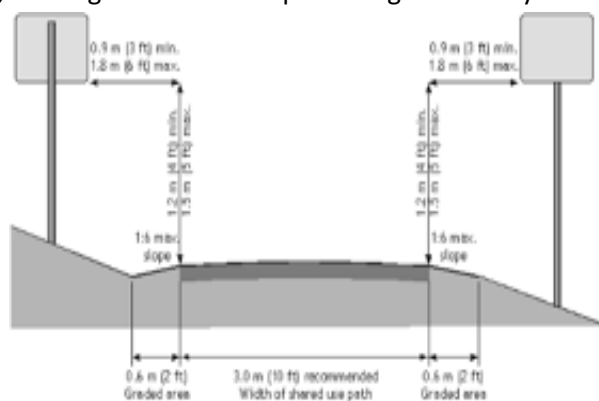
The January 2022 **Cape May County Comprehensive Plan** identifies the existing trail network and planned trails within the County. This includes the planned connection from Beesley's Point in Upper Township southward to the planned trail within Dennis Township; the subject of this study. The overall intent is to extend the linkage northerly through Atlantic County, to Ocean City to the East, and Philadelphia to the west.

The January 2021 Redevelopment Plan – Beesley's Point Redevelopment Area cites, "...redevelopment in a manner which serves the public health, safety, and welfare of the community and region...". While the Plan does specifically assess the benefits of pedestrian and bicycle trail linkage, the planned trail segment will improve multi-modal access to areas in need of public accessibility, and potentially stimulate the development of said areas.

## 1.3 TRAIL CHARACTERISTICS

The proposed trail will be a multi-use paved trail which can be considered a shared bicycle and pedestrian route to be utilized by users of all ages. The trail will generally be 10' wide, with potential for narrowed segments through environmentally sensitive areas, or segments within public rights-of way. Trail segments crossing wetland areas, especially on US Fish and Wildlife Service lands, will require a raised boardwalk platform design rather than paved surface, although these elevated segments are planned to be very limited due to their increase construction cost.

While the intent of this planning effort is to create a travel experience entirely separate from existing paved roadways, a variety of constraints demand portions of the route be included within existing public road rights-of-way but with the goal of achieving physical separation from vehicular travel lanes. The proposed planned trail route segments may consist of a variety of environs as shown with the below actual planning area conditions including:



**Figure 2.**  
**Data Sources: Federal Highway Administration University Course on Bicycle and Pedestrian Transportation (Cross-Section)**

### Rail to trail or trail next to rail.



**Cleared areas within overhead Atlantic City Electric rights-**



**Along existing wooded paths created by off-road vehicles.**



**Along Woodbine Ocean View Road (County Road 550).**



Off-road trail types may include the following which is provided for illustrative purposes to provide a sense of what may be constructed pursuant to future design and permitting:

**Rail to trail**



**Boardwalk**



**Rail next to trail**



**Through utility easement**



**Next to utility easement**



On-road trail segments will generally fall into four classifications shown in the order of most to least desirable:

**Buffer-separated**



**Barrier-separated**



**Unprotected – on shoulder**



**Unprotected – lane share**



As with most trail routes through communities, there will need to be road crossings. In general, elevated pedestrian crossings are only considered over major highways, and require significant land area (with the potential need for land acquisition) on both approaches to achieve the necessary vertical vehicle clearance. These structures are very expensive and were not considered a feasible option for this study. All of the crossings are planned to be at-grade with appropriate signage, and striping and markings, and the number of crossings has been minimized for the planned route.

Multiple trailheads are planned due to the length of this segment. Trailheads are destinations for trail users in which vehicle parking and easy trail access is made available. The proposed trail will link with the existing Dennis Township trailhead on Kings Highway at Dennisville Road, and the existing Beesley's Point trailhead at Harbor Road and North Shore Road.



**Dennis Township Trailhead**



**Beesley's Point Trailhead**



## **2.0 PLANNING PROCESS**

### **2.1 STUDY TEAM**

The trail feasibility effort was sponsored by SJTPO (with Alan Huff, former Program Manager – Safety Initiative & Public Outreach serving as the project manager) as a liaison to the Cape May County Planning Department (Ms. Leslie Gimeno, PP, AICP, MPA – Planning Director). SJTPO is the regional Metropolitan Planning Organization(MPO) servicing Cape May County, along with Atlantic, Cumberland, and Salem Counties.

The planning effort collaboration included Upper Township (Mr. Paul Dietrich – no longer with the Township), and Dennis Township (Mr. Scott Turner, Deputy Mayor). Other important stakeholders and regulators include:

Atlantic City Electric –	Kimberli Broderbeck
Conrail -	Steve Scullin
NJ Transit -	Gerry Fahey and Al Amaechi
Cape May Seashore Railroad Line -	Tony Macrie
Rails to Trails Conservancy -	Anya Saretzky
U.S. Fish & Wildlife Service -	Robin Donohue
NJDEP -	Ryan Anderson, Kelly Davis
USACE -	Genevieve Sarlo
NJPC (National Reserve) -	Branwen Ellis

The Planning team consist of Pennoni Associates, Inc. (Engineering and Planning), The Lomax Consulting Group (Environmental), and Rodriguez Consulting LLC (GIS).

### **2.2 PUBLIC OUTREACH**

Pennoni initially provided up to date content to be included on the SJTPO website ([www.sitpo.org/capemaycotrailconnector](http://www.sitpo.org/capemaycotrailconnector)) which invited public response and links to planning documents. A one page flyer (included in Appendix E) was created and added to the above site to advertise the Town Hall meeting to be held on April 19, 2023, and provided general overview of the planning program.

The virtual Town Hall meeting was also published through a web announcement, social media, and an e-list, each of which are also included in Appendix E.

Each participant was required to register online. The list of property owners impacted by the planned trail route were provided written notice of the meeting. It should be noted that prior to this meeting, these owners were also mailed letters requesting access to their properties for the field assessments defined above. The property owner list is included in Appendix A.

The presentation was made by Pennoni which included the methodology utilized to select the optimal trail route, and walked the audience through the entire length of the preferred route, while discussing alternate routes and the reasons those alternates were not selected. Poll questions were asked periodically throughout the presentation to engage the audience. Questions were invited both during and after the Town Hall presentation.

Based on public concerns expressed after the presentation, the project team determined a second in-person Town Hall meeting should be held at the Upper Township municipal building on June 13, 2023. This meeting was organized by the former Upper Township Engineer. Notices were sent by Upper Township to the registered attendees to the first meeting, and to any public who responded to the on-line questionnaire prior to the first meeting. A handwritten sign in sheet is on file at Upper Township. One member of the Upper Township governing body was present. We understand that formal written meeting minutes were not produced for this meeting.

Approximately 20 community members, almost exclusively from the Thicket Street and Meghan Lane residential subdivision, attended this meeting. This group was unified in their concern about the trail options which include a segment along the west and north perimeter of the subdivision, and an alternate on-street option along Meghan and Thicket. Neither option requires any land acquisition from private landowners, but this particular public outreach event was not in favor of either option, and would prefer the trail avoid their particular neighborhood.



**Figure 3. Proposed Trail Network near Thicket Street and Meghan Lane**  
Data Sources: NJDEP, NJDOT, NJOGIS

## **3.0 TRAIL ROUTING ANALYSIS**

### **3.1 EXISTING CONDITIONS INVENTORY**

An initial desktop project study area assessment was performed using multiple sources including local zoning, NJ GeoWeb, NJDEP publicly available natural resource mapping, Google Earth, NearMap aerial imagery, prior regional studies, and existing and planned adjacent trail documentation. A GIS project file was created using existing aerial backgrounds, overlain by municipal and tax lot boundaries, State planning areas, NJPC Pinelands National Reserve and Protection Areas designation, roads, existing trails, and utility rights-of-way, NJDEP-mapped wetlands and streams, NJDEP Landscape Project mapping for threatened/endangered species potential habitats, FEMA-mapped flood hazard areas, points of interest, and parkland/open space areas. The NJDEP Green Acres Program Recreation and Open Space Inventory (ROSI) was also assessed so that a route could be selected that avoids being encumbered by ROSI properties.

Following the initial desktop assessment, extensive on-ground site investigations and resource assessments were conducted by the Planning team. These investigations included assessments of all the potential routes for physical impediments and safety considerations, planning and environmental constraints, potential alternate routes and crossings, conflicts with existing development, land uses, or roadways, and feasibility of the potential route and alternate segments. Assessment of environmental constraints included preliminary delineation of wetlands proximate to the potential routes, evaluation of the biotic communities through which the potential routing was being considered, and determination of potential mitigative strategies. Given the landscape through which the trail is generally proposed, avoidance of all environmentally sensitive areas may not be possible. Accordingly, alternate route segments and design options were assessed to minimize disturbance to such areas. A summary of the environmental features identified proximate to the potential routes is reviewed in the following section.

### 3.1.1 Environmental Features

#### 3.1.1.a Wetlands

The New Jersey Freshwater Wetlands Protection Act Rules (*N.J.A.C. 7:7A-3*), establish procedures for the evaluation and permitting for certain activities within regulated wetlands or their associated transition areas. Regulated activities associated with the construction of a multi-use trail in wetland areas include disturbance of soil, placement of fill or pavement, and disturbance of vegetation. Therefore, it is expected that construction of a proposed multi-use trail in wetlands or their associated transition areas will require authorization from the NJDEP.



Figure 4a. NJDEP-mapped Wetlands and Preliminary Wetlands Delineation by TLCG  
Data Sources: NJDEP, NJOGIS



Figure 4a-1. Focus Area #1 of NJDEP-mapped Wetlands and Preliminary Wetlands Delineation by TLCG  
 Data Sources: NJDEP, NJOGIS

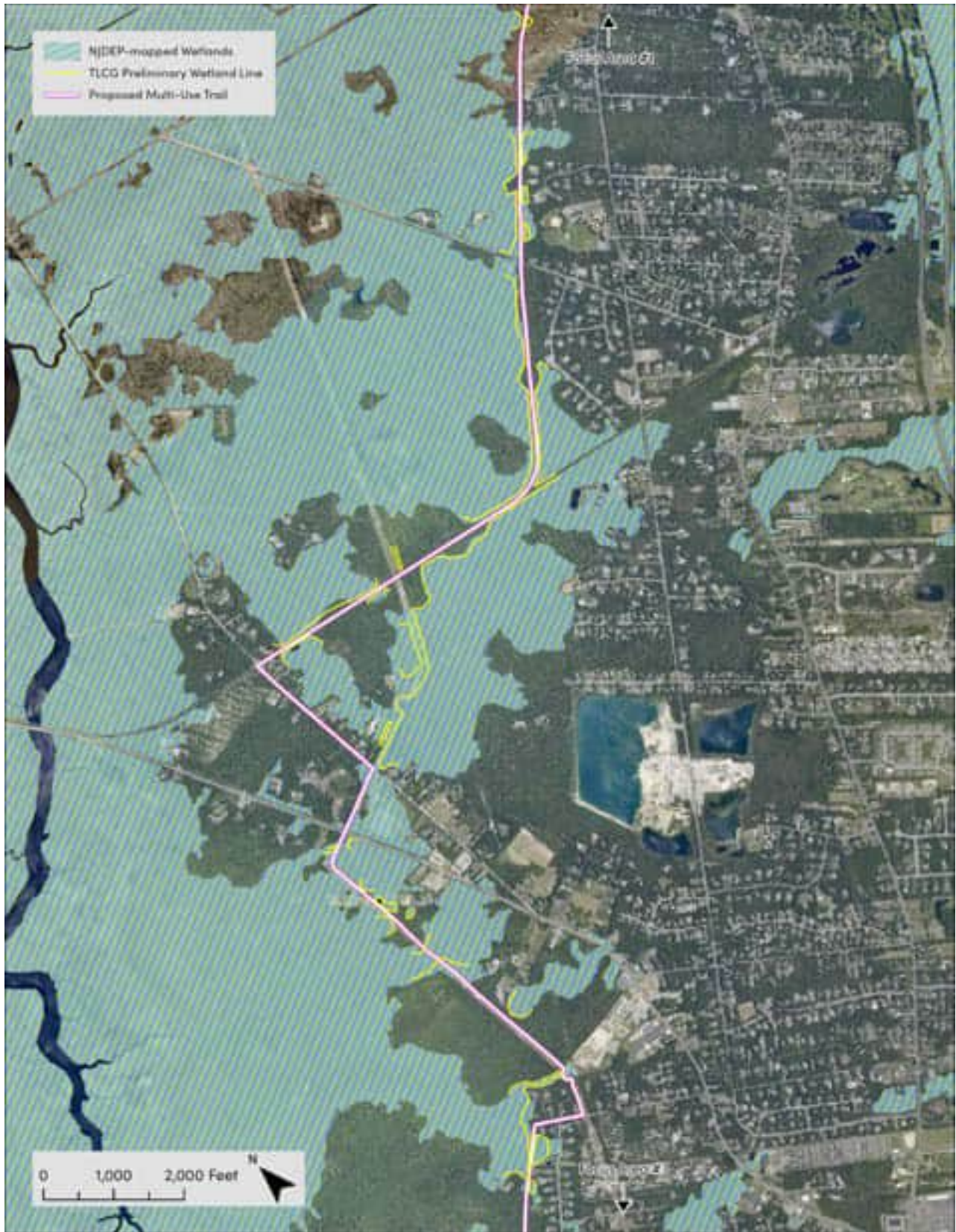


Figure 4a-2. Focus Area #2 of NJDEP-mapped Wetlands and Preliminary Wetlands Delineation by TLCG  
Data Sources: NJDEP, NJOGIS



Figure 4a-3. Focus Area #3 of NJDEP-mapped Wetlands and Preliminary Wetlands Delineation by TLCG  
 Data Sources: NJDEP, NJOGIS



The study area, in large part, is impacted by wetlands associated with the Cedar Swamp Creek drainage basin which generally parallels the trail route to the northwest. This drainage basin includes portions of the Cape May National Wildlife Refuge which includes several protected habitats. The selected trail route intends to maximize the use of approximately 5.3 miles of existing NJ Transit rail lines. The desire here is to leverage these existing railbeds, which are elevated above the adjoining wetlands, thereby implementing Rail to Trail as a solution to avoid and/or minimize environmental impacts.

Freshwater and coastal wetland habitats proximate to all potential routes, reviewed in this comprehensive assessment, were preliminarily delineated by The Lomax Consulting Group as illustrated above on Figures 4a-1 through 4a-3. Wetlands limits were established through the use of technical criteria and field indicators applying the three-parameter approach in accordance with the 1989 Federal Manual (for NJDEP jurisdiction via the *New Jersey Freshwater Wetlands Protection Act of 1987 (N.J.S.A. 13:9B)*, *Wetlands Act of 1970 (N.J.S.A. 13:9A)*) and 1987 Interagency Manual (for USACE jurisdiction via *Section 404 of the Clean Water Act (33 U.S.C. 1344)* and *1977 Amendments (P.L. 95-217)*) and their associated regulations. These resource limits were recorded via handheld GPS data collection devices for use in amending the aforementioned GIS project file.

A formal delineation of the wetlands proximate to the final proposed route will be required and verification of the delineation by NJDEP shall be requested as part of the permitting efforts for the future project authorization. Areas of previously undisturbed wetlands should be avoided, where possible, as achieved by the proposed route, and the proposed trail should maximize the use of existing disturbed areas wherever possible to comply with Freshwater Wetlands Protection Act Rules. Areas where the proposed trail would need to cross a wetland on lands owned or controlled by the US Fish and Wildlife Service will require a boardwalk as directed by US Fish and Wildlife Service Cape May National Refuge management staff during project planning consultation.

#### 3.1.1.b Tributary crossings

Review of NJDEP's mapped streams and the StreamStats program provided by the USGS determined there are no designated tributary crossings along the proposed route. Any crossings of a waterway would require either a boardwalk or open culvert to be installed as part of the project to ensure that existing hydrology is maintained. Please note that culvert crossings from existing stormwater management facilities were identified proximal to the Peach Orchard Community. These features may require maintenance or upgrades as part of the proposed trail project to ensure proper flow of stormwater in that area.

### 3.1.1.c Vernal pools

Vernal pools are confined natural or manmade depressions which hold water for at least two consecutive months during the breeding and larval development stages of amphibious species (March-September) but do not sustain standing water throughout a normal rainfall year, and are devoid of fish populations. These pools can serve as critical habitat for species of amphibians, insects, reptiles, and plants, including rare, threatened and/or endangered species and are therefore of significance to NJDEP for habitat protection. The NJDEP has mapped vernal pools within the trail study area and proximate to the proposed route. Please note that NJDEP assigns a 300-meter modeled dispersal area for amphibian species extending from each vernal pool for which disturbance is restricted and additional limitations or requirements could be placed on the proposed trail by NJDEP. While initial biotic communities evaluation were completed as part of this planning effort in an effort to minimize crossings within the 300 meter dispersal area radius, more extensive presence/absence investigations could be required depending on final trail routing.

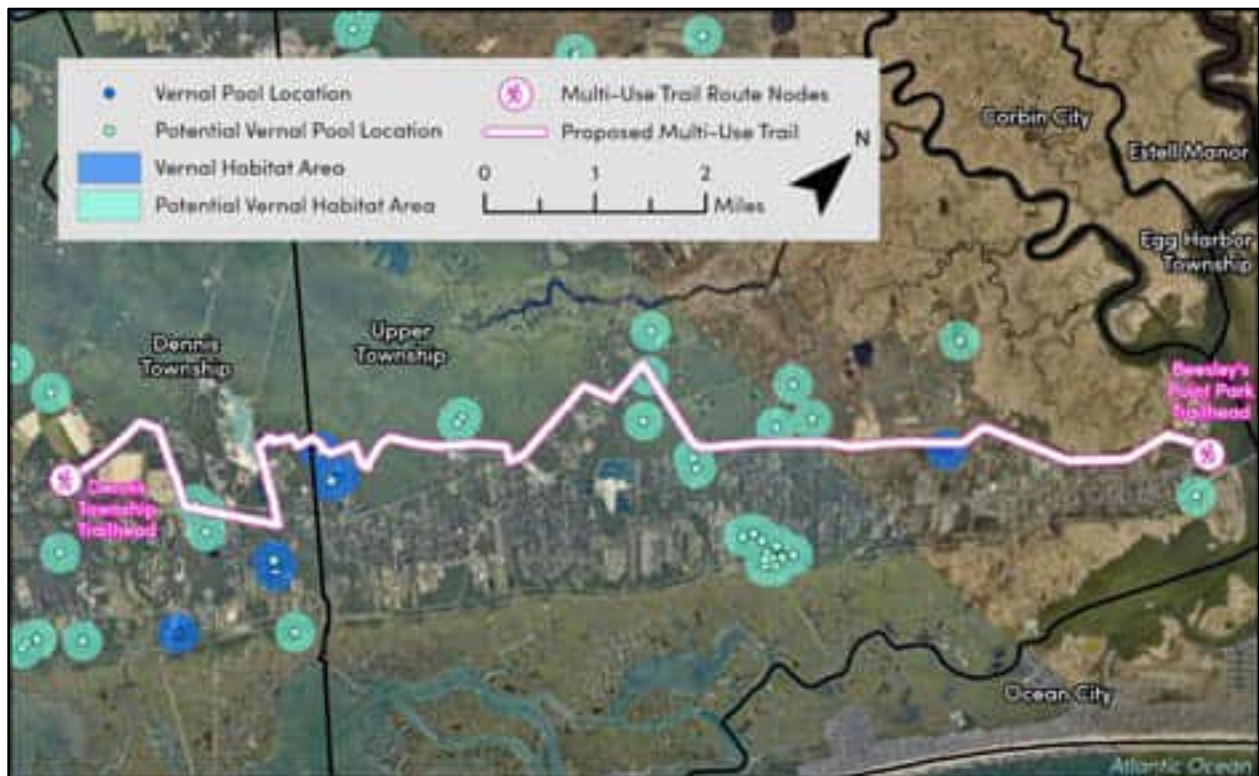


Figure 5. Vernal Pool Locations  
Data Sources: NJDEP, NJOGIS

#### 3.1.1.d Flood Hazard Areas

The NJ Flood Hazard Area Control Act Rules (*N.J.A.C 7:13*) govern the activities occurring within low-lying lands comprised of flood hazard areas and riparian zones associated with regulated waters, including defined stream corridors. The proposed route for the multi-use trail crosses through several flood hazard areas where the project activities will be subject to Flood Hazard Area regulation. Though the proposed route does not cross any mapped waterways, regulated waters adjacent to the route can be assigned a riparian zone of 300, 150, or 50 feet in width extending from the top of bank.

These riparian zones widths are in part determined by surface water quality classification (i.e., designation of the waterway as being a Category One water will result in a 300-foot riparian zone and designation as a trout production or trout maintenance water will result in a 150-foot riparian zone). Additionally, waters that contain a threatened or endangered species and/or present or documented habitat for those species, which is critically dependent on the regulated water for survival and all upstream waters located within 1 mile of such habitat, will result in a 150-foot riparian zone.

Portions of the environmentally sensitive areas proximate to or overlapping the proposed route are mapped for listed species and some waterways along the northern extent of the proposed route are adjacent to mapped Category One waters. Accordingly, disturbance of vegetation in these overlapping riparian zones will be regulated by the Flood Hazard Area Control Act Rules and the associated disturbance limits should be considered when designing the final multi-use trail alignment.

#### 3.1.1.e Topography

As is common in Cape May County, variation in the topography within the study area is generally minimal, (less than 10% slope), and remains generally flat for the entire route. The route options were evaluated with the understanding the trail design will need to satisfy the 2010 ADAAG rules for handicapped accessible routes. This design criteria will need to be addressed at the proposed trailheads and road crossings. The off-road lengths of trail are not expected to traverse areas which exceed a 5% longitudinal slope.

### 3.1.1.f Rights-of-way and Easements

The study area is traversed by state, county, and municipal roadways, as well as the NJ Transit Rail right-of-way and Atlantic City Electric easement which were mapped during the initial desktop evaluation of the Study Area. These rights-of-way and easements are important as they provide an existing area of disturbance through environmentally sensitive areas and NJDEP-regulated resources, while also avoiding conflicts with existing residential and commercial development. Use of these existing disturbances allows for the potential trail route to traverse such sensitive areas where such activity would be prohibited or strongly discouraged by NJDEP regulation and NJPC input via comment. As an example, the majority of the existing multi-use trail in Cape May County primarily leverages the use of historic railroad rights-of-way and electric power line easements to extend from Lower Township to its current terminus in Dennis Township and which minimized disturbances to sensitive environments.

The below figure identifies the major roadways, utility easements associated with electric transmission lines, and historic railroad rights-of-way, portions of which are no longer in operation, located in the Study Area. The routes studied for this analysis primarily used these features to avoid disturbances to the environment to the maximum extent possible, and disturbance to existing residential or commercial development.

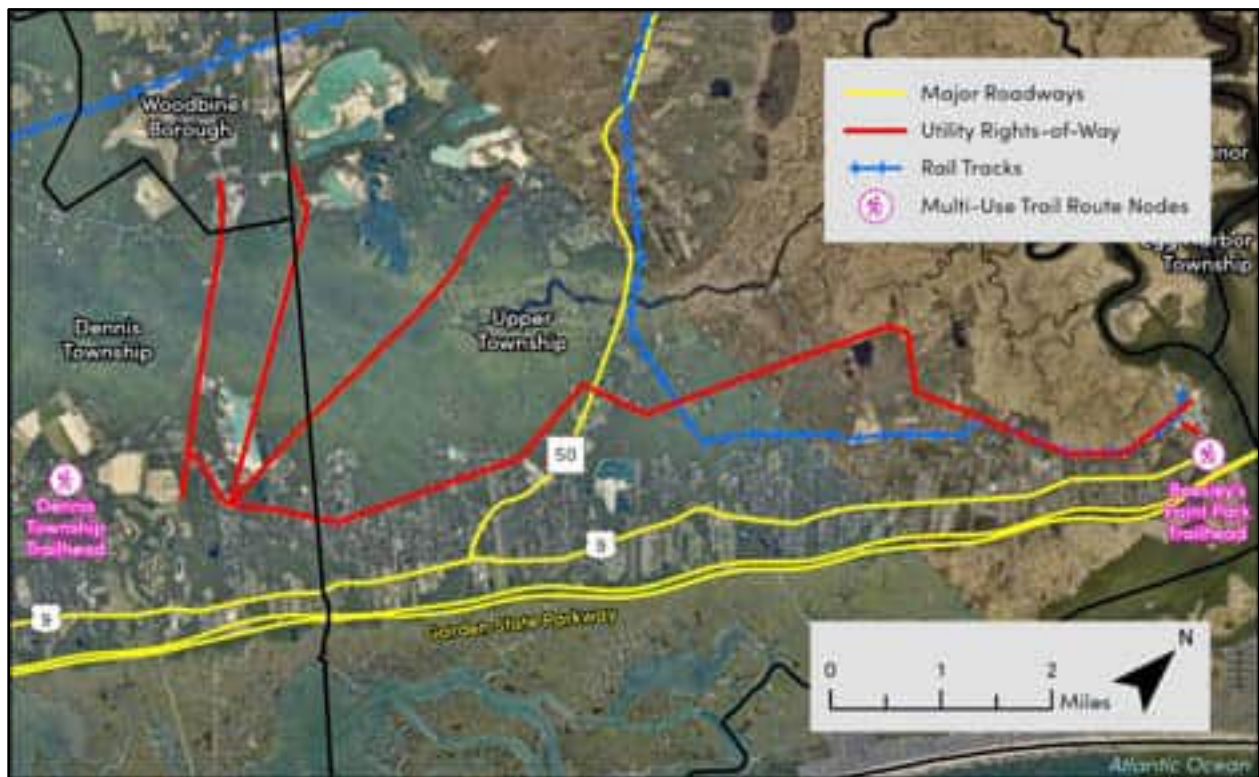


Figure 6. Transportation and Utility Rights-of-Way  
Data Sources: NJDEP, NJDOT, NJ Transit, NJOGIS

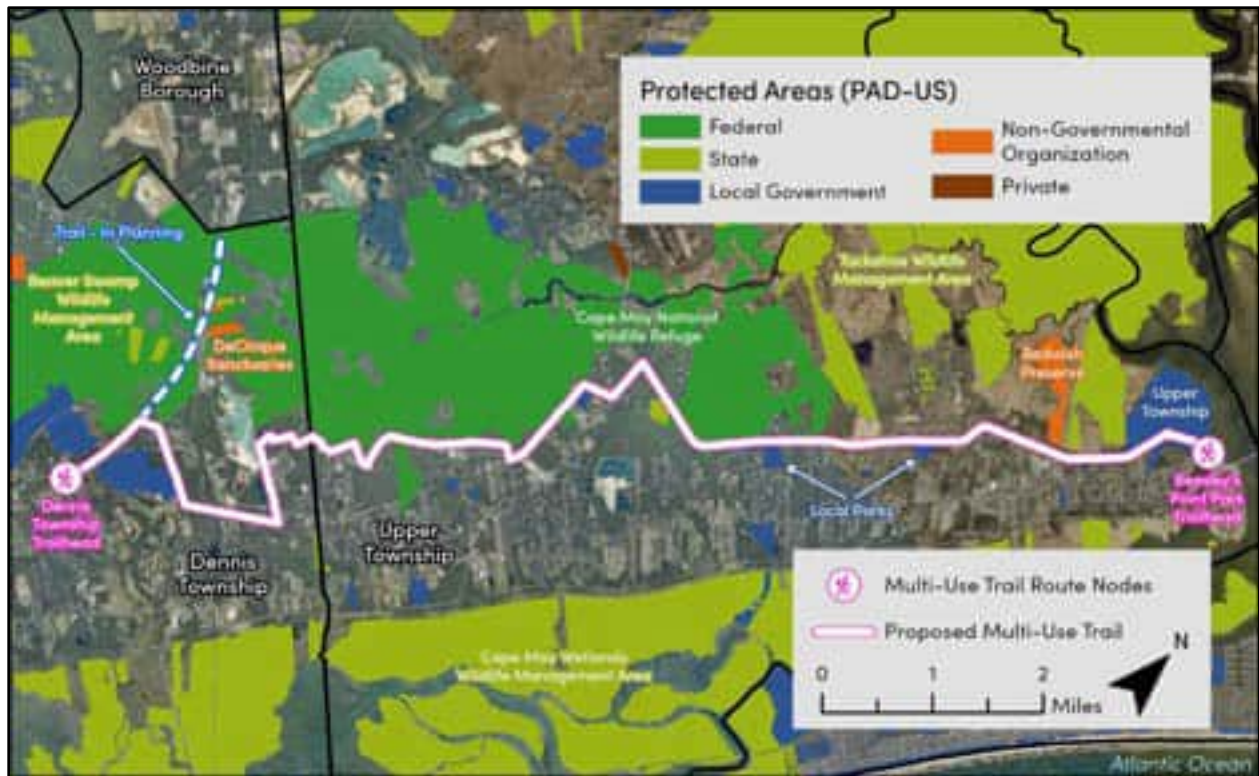
### 3.1.1.g Conservation Areas

The trail study area is in Pinelands National Reserve and NJPC Pinelands Management areas, though outside of the Pinelands Protection Area, and is bordered by a Federal Wildlife Refuge to the west as shown in the two figures below. The entire Study Area is also located in the Coastal Area Facilities Review Act (CAFRA) Area. Since a main goal of the planning effort was to have as little on-road trail as possible, while also minimizing impacts to environmentally sensitive areas, the proposed trail route closely adheres to the boundary between the Pinelands Regional Growth Area and Pinelands Forest Area/Wildlife Refuge. The planned route also avoids impacts to Green Acres Program Recreation and Open Space Inventory (ROSI) properties.

As the proposed routes are not located in the Pinelands Protection Area, but are in Pinelands Reserve/Management Areas, NJPC is only a commenting agency; direct authorization from the NJPC would not be required. However, given the NJPC role in providing constructive comments to NJDEP as part of the State permit application process, it would need to be demonstrated that the project complies with the intent of the Pinelands Comprehensive Management Plan (CMP), specifically that there are not otherwise practical and feasible alternative routes that avoid crossing wetlands or environmentally sensitive areas. Similarly, for the US Fish and Wildlife Service to authorize the proposed route crossing any land that they own or control, it would need to be clearly demonstrated that there are not practical or feasible alternatives. Since the project is in the CAFRA area, if the project passes within 150 feet of the mean high water line, which may be required in the northern extent of the route, then CAFRA permitting from NJDEP may be required to authorize the project. The exact location of the mean high water line in relation to the final proposed route will need to be analyzed in greater detail to determine applicability of CAFRA regulation and the extent to which permitting under the NJDEP Coastal Program will be required.



Figure 7. Pinelands Management Areas and Coastal Area Facilities Review Act (CAFRA) Area  
Data Sources: NJDEP, NJOGIS, NJ Pinelands Commission



**Figure 8. Protected Areas (PAD-US)**  
 Data Sources: NJOGIS, US Geological Survey

### 3.1.1.h Points of Interest

The trail route needs to consider reasonable accessibility to points of interest such as schools, parks, business centers, and eateries. Points of interest extending from Beesley’s Point to Dennis Township are shown on Figure 9 and include:

- Mad Beach Jet Ski Rental
- Upper Township Primary School
- Upper Township Elementary School
- Caldwell Park
- Ocean City Campground & Beach Cabins
- Shore Birds Campground
- Frog Hollow Bakery
- Giuseppe’s Gourmet
- Lake and Shore Beach Campground
- Down the Shore Seasonal Park
- Dennis Township Industrial Park
- CrossFit Parallax



Figure 9. Points of Interest.  
Data Sources: NJOGIS

### 3.1.1.i Parcel Boundaries

To avoid on-road routing of the trail to the maximum extent possible, the trail needs to traverse federal, state, county, Atlantic City Electric and Railway easements, and privately owned properties. The list of property owners impacted by the planned trail route is included as Appendix A. While the route selection was driven largely by environmental and physical constraints, it also considered the need for property crossings to minimize the need for easements and right-of-way takings. Federal, state and county owned lands were of primary focus, but also tend to have a predominance of environmentally sensitive areas.

Certain property owners were approached by Mr. Paul Detrich (former Upper Township Engineer), such as campground owners who consistently expressed concerns about a public trail through, or in close proximity to the relatively unsecure seasonal camp property perimeters. Concerns such as these modified the trail route to minimize the introduction of travelers through the campgrounds. The primary trail route does traverse along the south side of the Lake Shore campground, but an alternate route is considered to avoid the campground (Figure 10) in anticipation of further opposition.

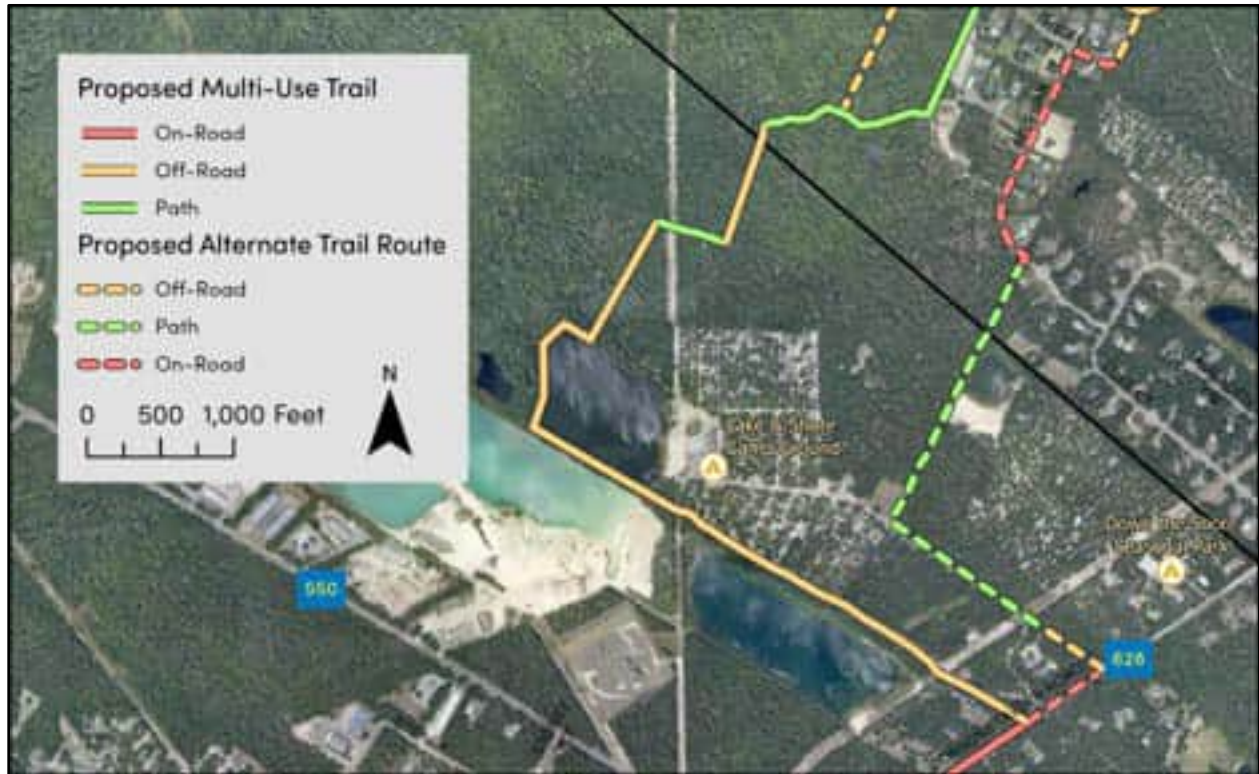


Figure 10. Proposed Trail Network near Lake & Shore Campground  
Data Sources: NJOGIS

### **3.2 ENVIRONMENTAL CONSIDERATIONS**

Portions of the proposed trail alignment are located within or near environmentally sensitive areas as discussed and illustrated in figures above. Environmental regulations governing these areas will need to be addressed as planning and design of the trail advance, including conducting environmental studies and obtaining the necessary construction permits. These considerations are detailed below.

A Joint Policy Program Meeting (JPPM) was conducted on September 13, 2023 with NJDEP, NJPC and USACE to aid in setting the criteria for preferred bikeway route selection and establishing information and design requirements for future permitting considerations. The findings from the intensive field assessment, desktop reviews, and discussion with individual regulators was reviewed at this meeting. The summary of the JPPM is included as Appendix B.



### 3.2.1 Pinelands Jurisdiction

The trail study area is in NJPC Pinelands National Reserve/Management Areas, though outside of the Pinelands Protection Area. Accordingly, NJPC would only be a commenting agency and direct authorization would not be required as confirmed by NJPC staff during the JPPM meeting. However, it would need to be demonstrated that the project complies with the Pinelands CMP, and that there are not practical and feasible alternative routes that avoid crossing wetlands or environmentally sensitive areas as part of any other permitting that would need to be submitted to NJDEP. The Pinelands Protection Act Rules regulate the use of resources and “development” within the Pinelands jurisdictional boundary. Construction of a trail is considered “development” under the Pinelands Protection Act Rules. Coordination with the NJPC should be conducted during Preliminary Engineering (PE) to confirm if Pinelands has any comments or design features they would wish to see included in the project.

### 3.2.2 NJDEP Flood Hazard Area

Construction of the trail may impact resources regulated under the Flood Hazard Area Control Act (FHA) Rules (i.e., floodway, flood hazard areas, and riparian zones) and may require a NJDEP Flood Hazard Area Control Act Permit. If the final proposed route does not cross any waterways and can avoid disturbance to vegetation in any riparian zones, FHA permitting would not be required. In addition, if a CAFRA or Coastal Wetlands permit is required, FHA regulations would be addressed as part of the Coastal Program permitting process, thus a separate FHA permit would not be required.

### 3.2.3 NJDEP Freshwater Wetland

The freshwater and coastal wetlands proximate to all the potential routes that were reviewed in this assessment were preliminarily delineated by The Lomax Consulting Group. This wetlands exhibit is included in Section 3.1.1,a above. A formal delineation of the wetlands proximate to the final proposed route will be required and verification of the delineation by NJDEP shall be requested as part of the permitting efforts for the project. Areas of previously undisturbed wetlands will need to be avoided and the proposed trail should maximize the use of existing disturbed areas whenever possible to comply with Freshwater Wetlands Protection Act Rules. Areas where the proposed trail would need to cross a wetland area will require a boardwalk as required by the US Fish and Wildlife Service. A NJDEP Freshwater Wetland Permit will be necessary for activities in wetlands and transition area.

### 3.2.4 No Net Loss Reforestation

No Net Loss Reforestation may be applicable if ½ acre or more of forested land is affected. The affected forested area must be maintained or owned by the state to qualify. There are several state-owned forested parcels adjacent to the proposed trail alignment. Deforestation impacts should be calculated when more detailed engineering has been performed to determine if the project will be impacted by the No Net Loss Reforestation Act.

### 3.2.5 Wildlife Management Areas

The trail traverses several Wildlife Management Areas. Please refer to Appendix B which contains a summary of the JPPM meeting conducted during this planning effort.

### 3.2.6 Threatened and Endangered Species

Landscape Project mapping was consulted, and Natural Heritage Database searches were requested of the NJDEP for location information of rare species and ecological communities within the vicinity of the trail routes included within the preliminary trail alignments discussed in Section 3.3 (which considered multiple route possibilities). There are multiple species and habitat areas listed within the letters which are included as Appendix C. A new Natural Heritage Database request will be needed for the current planned trail.

### 3.2.7 Hazardous Waste/Contamination

Rail lines are generally associated with contamination, usually polynuclear aromatic hydrocarbons (PAHs) and metals due to the nature of rail operations. A segment of the trail is proposed to run along a rail corridor. Hazardous waste investigations should be conducted in PE to determine the potential for encountering contaminated materials during construction. These investigations should focus on areas where construction activities will result in soil excavations and ground disturbance.

### 3.2.8 Historic Resources

The trail may traverse architectural and archeological Areas of Potential Effect (APE) regulated by the New Jersey State Historic Preservation Office (SHPO). Coordination with SHPO is recommended during the next phase of the project to determine if implementation of the project will require a Cultural Resource Survey. The SHPO may offer recommendations for landscaping, aesthetic treatments, interpretive signage, etc. within potential historic districts along the trail alignment.

## **3.3 PRELIMINARY TRAIL ALIGNMENTS**

The project team initially assessed several trail alignment options based on the above criterion. It was determined the reuse of the rail parallel to State Route 50 north into Petersburg was a less desirable option due to the increased overall trail length and extended trail segments located on-road. The team determined the trail route needed to remain east of Cedar Swamp Creek which achieves a number of the planning goals including:

- Remaining within the initial desired planning area.
- Use of existing easements/ rights-of-way including those for NJ Transit and Atlantic City Electric
- Providing a trail with exposure to a multiple different environs
- Providing access to multiple public destinations
- Offering of multiple accessible trail heads
- Minimization of impacts to environmentally sensitive areas despite an abundance of same
- Minimization of on-road segments

The trail segments shown in **Figures 12a, 12a-1, 12a-2, 12a-3, 12a-4** were evaluated, all of which focused on minimization of on road length, and maximization of rail and Atlantic City Electric (ACE) easement use, as well as paths through wooded areas not encumbered by wetlands and habitat. The westerly termination of the trail originally contemplated multiple connection points along the planned Woodbine trail (shown as dashed blue line). However, it was determined that due to an extended portion of the planned trail being within marsh wetlands associated with Cedar Swamp Creek, resulting in the need for the trail to be elevated boardwalk, the trail would not be constructed due to cost. The primary route from

the Beesley's Point trailhead to the planned Woodbine trail is shown in red, with multiple alternate segments assessed as described below.

- Red Route (Route #1): Most direct; on-road from Beesley's Point through Marmora, on-rail to the ACE easement east of Tyler Road, and ACE easement across Kings Highway to a proposed connection to the planned Woodbine Trail.
- Yellow Route (Route #1A): West of the NJ Transit rail to trail segment; utilizes wooded, wooded path, and on-road segments to connect to the planned Woodbine trail north of the red route.
- Purple Route (Route #1B): Utilizes woodlands, ACE easement and Dennisville-Petersburg Road to connect to the planned Woodbine trail north of the yellow route.
- Pink Route (Route #1C): West of the NJ Transit rail to trail red segment; uses the ACE easement.
- Green Route (Route #1D): West and parallel with on-road red route segment; uses NJ Transit ROW.

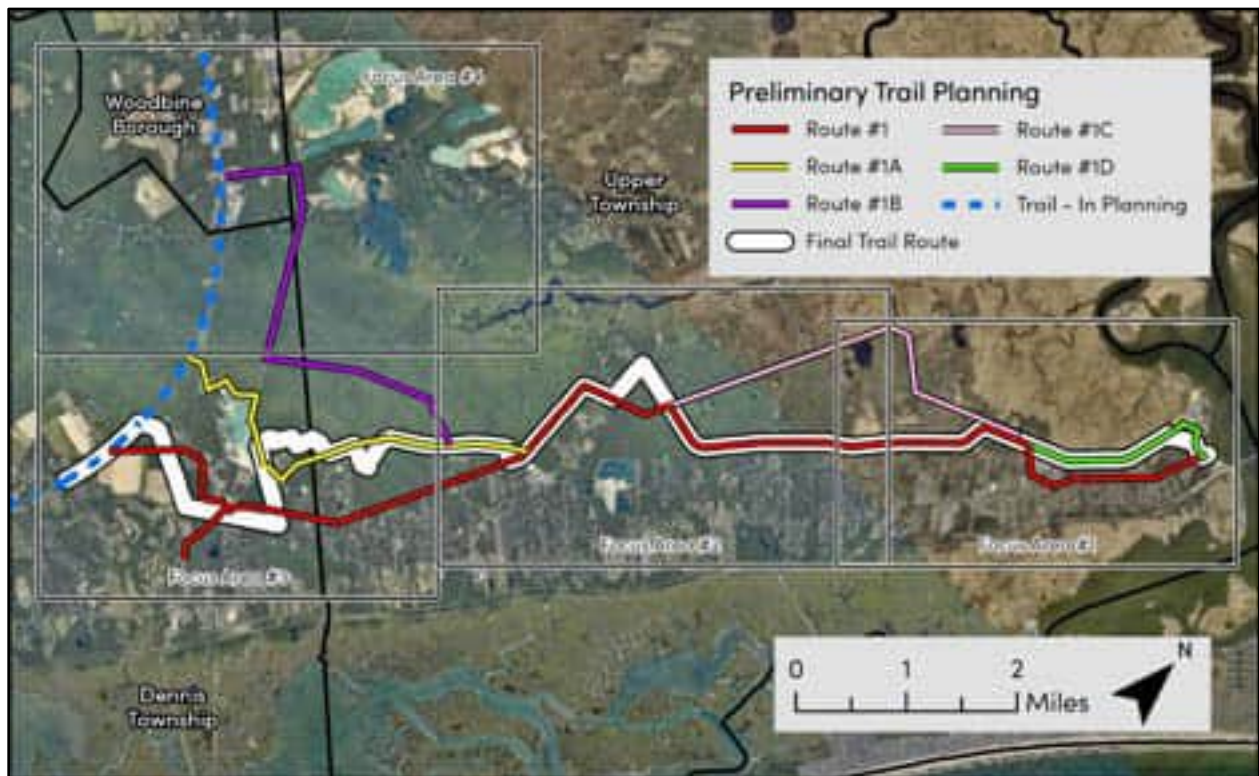


Figure 12a. Preliminary Trail Planning  
Data Sources: NJGIS

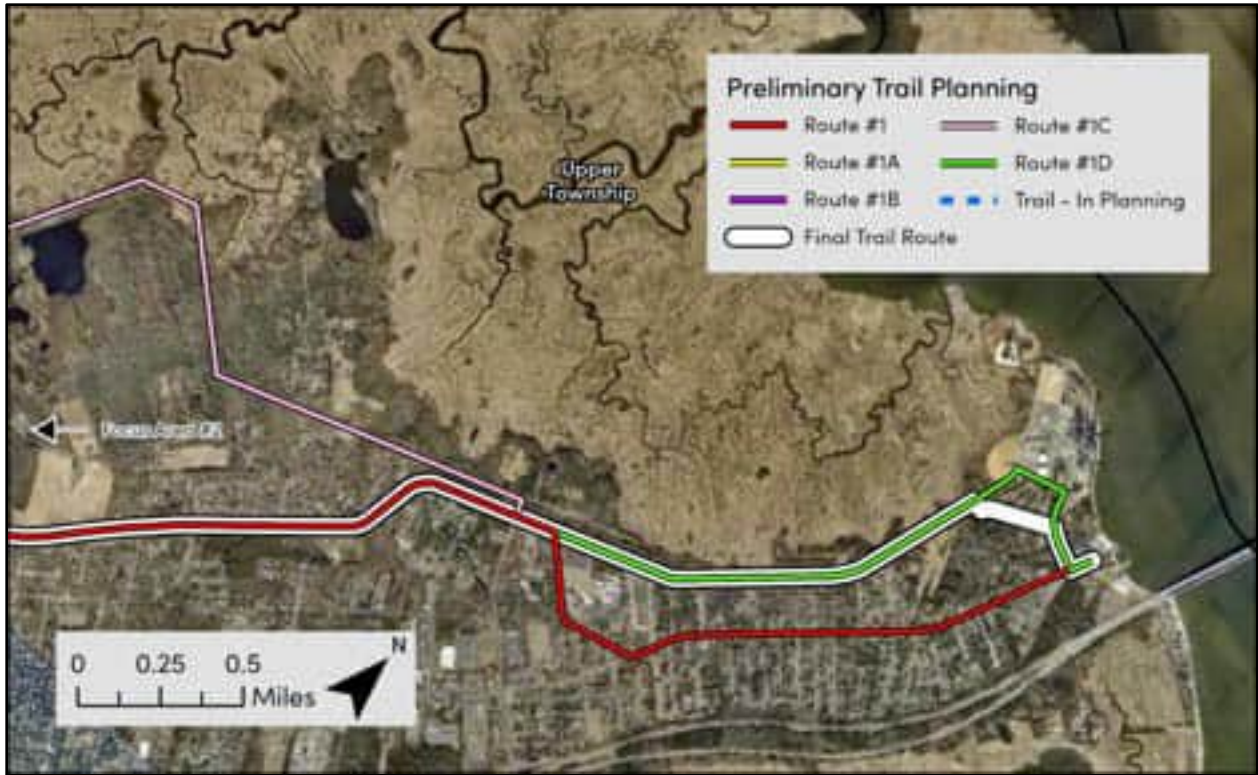


Figure 11a-1. Preliminary Trail Planning Focus Area #1  
Data Sources: NJGIS

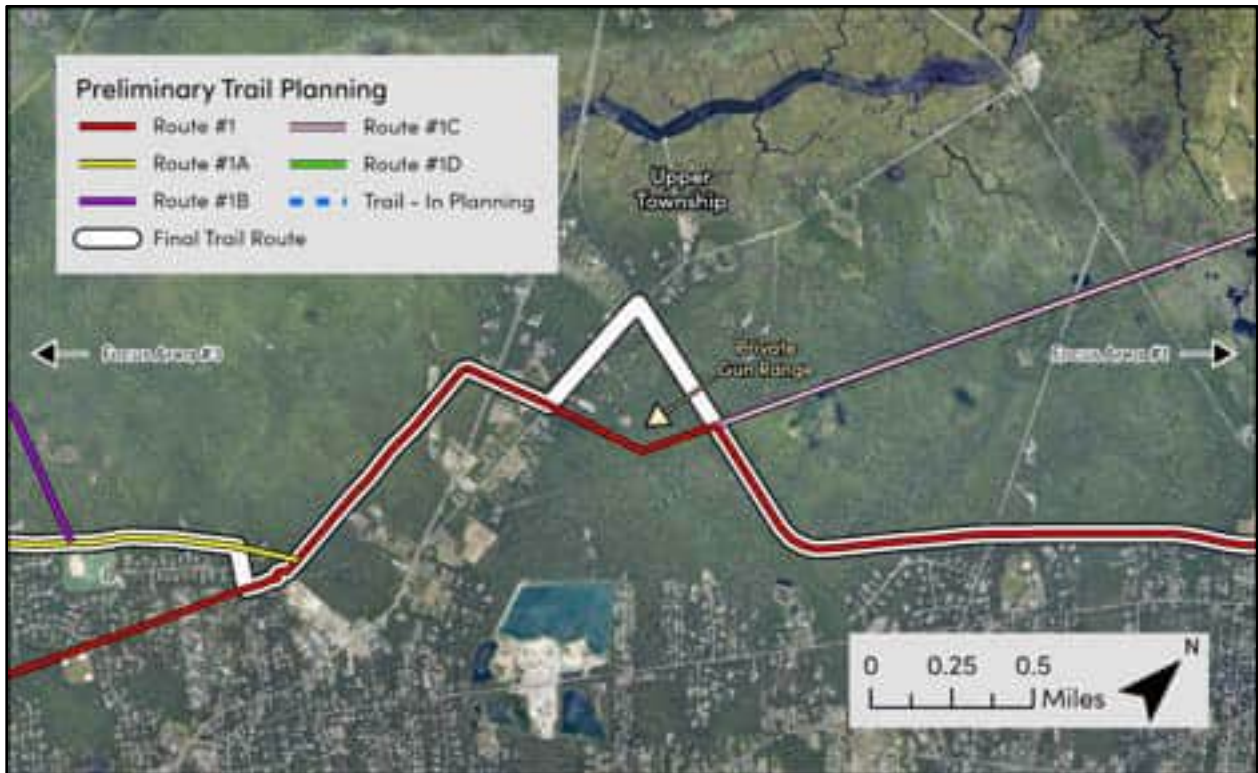


Figure 11a-2. Preliminary Trail Planning Focus Area #2  
Data Sources: NJGIS

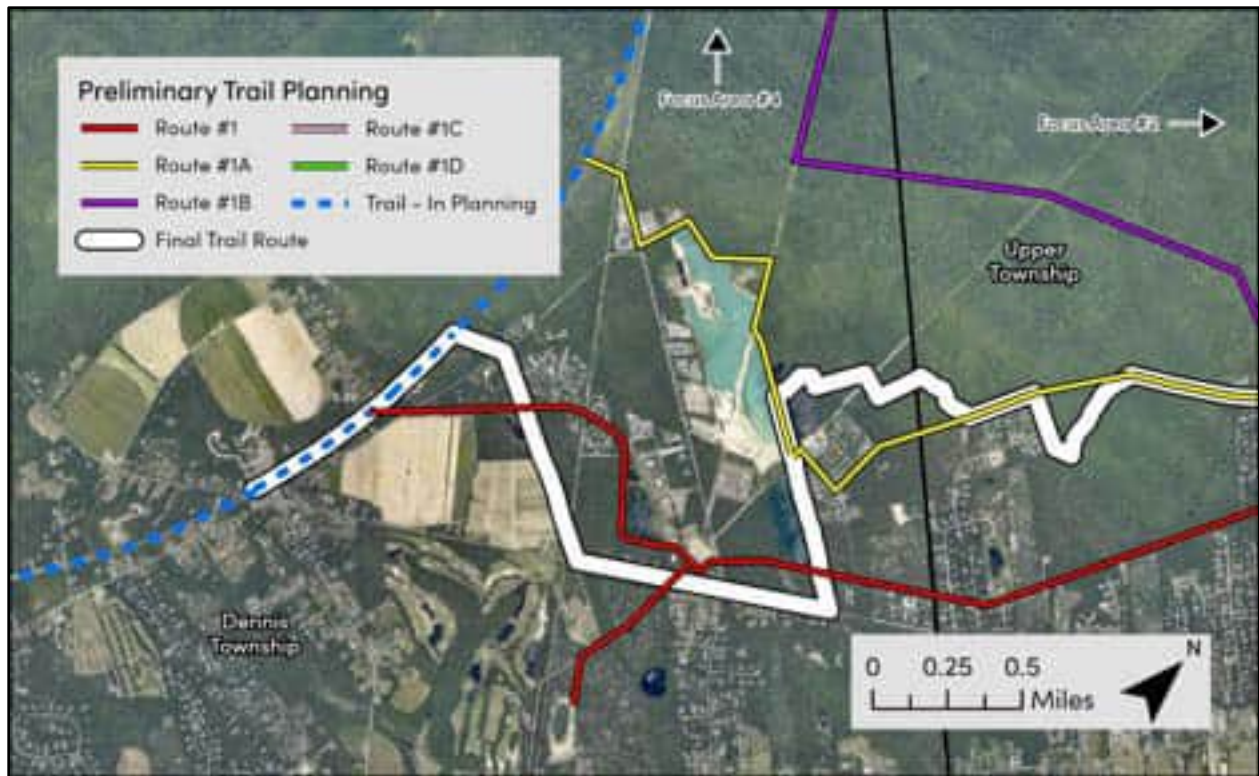


Figure 11a-3. Preliminary Trail Planning Focus Area #3  
Data Sources: NJGIS

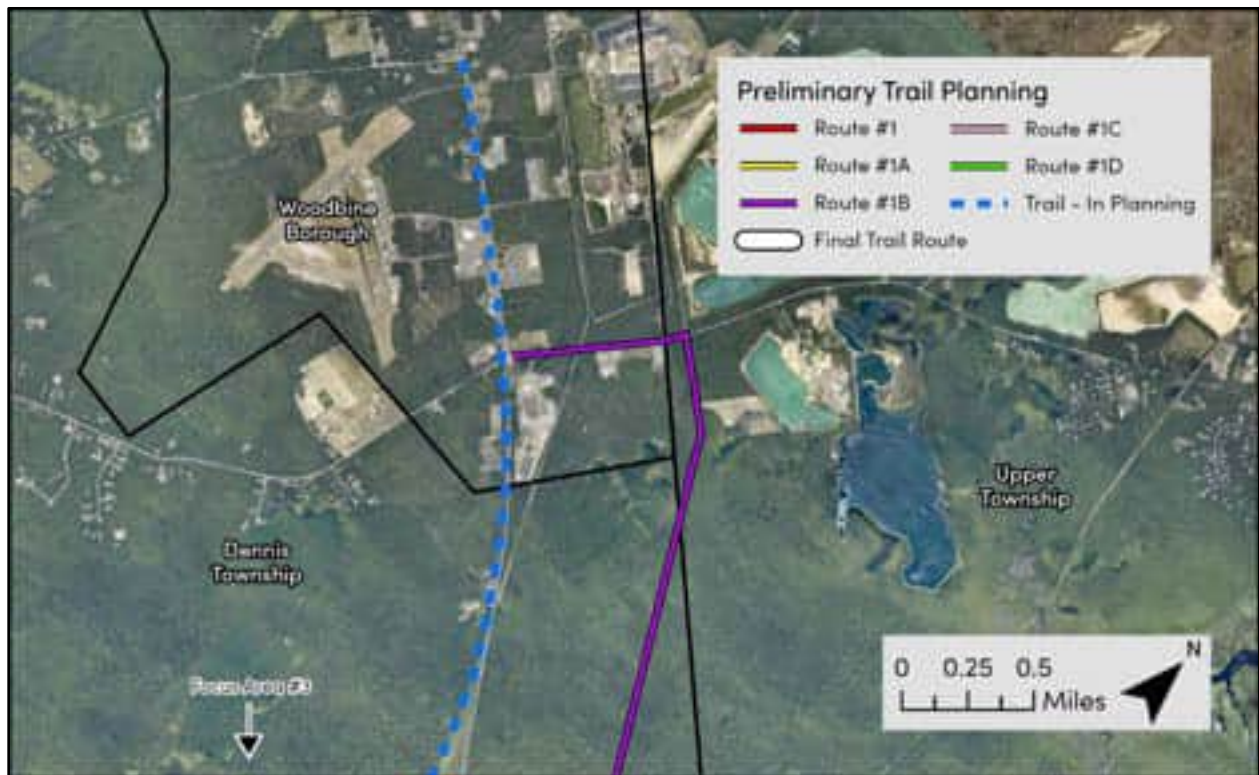


Figure 11a-4. Preliminary Trail Planning Focus Area #4  
Data Sources: NJGIS

## **4.0 CONCEPT PLAN**

### **4.1 TRAIL ALIGNMENTS**

The selected trail route is approximately 13.7 miles long and utilizes portions of the studied preliminary segments with some modification (defined in the above Figure 11 series) as can be expected due to a multitude of planning findings discussed above. The selected trail predominantly utilizes the Red Route (Route #1) within Focus Areas 1 and 2. The Green Route (Route #1D) which extends from the Beesleys Point Trail head through the B.L. England property and along the rail was selected as a preferred alternate to the parallel on-road segment of the Red Route. The easterly portion the Yellow Route (Route #1A) which follows Peach Orchard Road and wooded paths was selected as the preferred alternate to the Red Route, which is located within the ACE easement, but traverses through multiple residential communities with several road crossings. The Pink Route located within the ACE easement was abandoned as a potential trail route because it extends farther into the US Fish and Wildlife Refuge which contains high value environmental habitat. The Purple Route was abandoned for similar reasons and the desire to connect to the Dennis Township Trail head rather than in Woodbine Borough.

This route assumes no acquisition of additional road ROW, although certain on-road segments would benefit greatly from additional ROW. All ROW widths referenced herein are based on current published Upper and Dennis Township Tax Maps, and have not been verified with survey.

The selected route was impacted by certain unique issues during the latter portion of the planning phases. This includes public input during the in-person town hall meeting, the need to avoid a private shooting range located within the ACE easement east of Tyler Road, and planned future surface mining on the Pierson Pleasantville LLC property. Portions of the planned trail route may receive additional public input once public hearings are conducted for its approval.

The design team and stakeholders have collaborated to determine the trail route is optimized as shown in **Figures 12a, 12a-1, 12a-2, and 12a-3**, and described as follows:

- Starting at the Beesley's Point trailhead, proceeding south along the east side of North Shore Road (66' ROW). The east side is selected to avoid utility poles, and the potential for a buffer-separated trail;
- Crossing North Shore Road and proceeding along the north side of Clay Avenue (50' ROW). The north side is selected to avoid wetlands adjacent to the south side of the road. The road may be widened to the utility poles to provide an on road bicycle lane. The Average Daily Traffic (ADT) for North Shore Road will need to be analyzed to determine if a flashing beacon is necessary at the crossing;
- Crossing Clay Avenue and proceeding southwest across the abandoned B. L. England golf course to the NJ Transit Rail ROW. A cross walk without a flashing beacon is anticipated due to the low ADT of Clay Avenue;
- Continuing south on rail to a proposed at-grade crossing of Tuckahoe Road (one lane each way with 6' wide shoulders) which will require removal of the existing rail crossing signals and addition of a flashing beacon. Trail on rail is desirable as there are significant lengths of wetlands along both sides of the rail;
- Continuing on rail to a proposed at-grade crossing of Church Road (C.R. 602) (one lane each way with 6' wide shoulders) which will require removal of the existing rail crossing signals. The ADT will need to be analyzed to determine if a flashing beacon is required for the trail crossings;
- Continuing on rail to a proposed at-grade crossing of Butter Road (C.R. 637) (one lane each way

with 4' wide shoulders) which will require removal of the existing rail crossing signals. The ADT will need to be analyzed to determine if a flashing beacon is required for the trail crossings;

- Proceeding on rail, crossing the ACE easement to Tyler Road (C.R. 616);
- Crossing Tyler Road (one lane each way with 6' wide shoulders) (40' ROW) and proceeding south along the west side of the road to the ACE easement. A flashing beacon is recommended at the crossing. Both sides of the road have physical conflicts and the existing ROW is too narrow to achieve a buffer-separate trail. The intent is to convert the existing shoulder to the bicycle lane (6' wide) with no cartway widening;
- Proceeding west within the ACE easement to a proposed crossing of S.R. 50 (one lane each way with 8' wide shoulders). A flashing beacon will be required, with very good horizontal and vertical sight lines;
- Continuing westerly and then southerly within the ACE easement across multiple US Fish and Wildlife properties and one private property to a marshy wetland which will require an elevated boardwalk, 10' wide for approximately 400 lf;
- Continuing southerly within the ACE easement to Peach Orchard Road.
- Proceeding northwesterly along the north side of the road to the southwesterly bend. The cartway is 32' wide (55' ROW) with curb and sidewalk along portions of both sides of the road. The trail will need to be shared with the cartway, either within the shoulder (requiring removal of on-street parking), or share the lane;
- Proceeding southwesterly along the north side of Peach Orchard Road to the intersection with Somers Avenue where the pavement ends. The segment of the road is much narrower (approximately 22' wide with a 35' ROW). The route will need to remain on-road. Cartway widening with tree clearing along the north side of the road should be considered.
- The proposed trail will continue in the same southwesterly direction within the unimproved ROW along a cleared path.
- The path turns southerly through Plantation Enterprises properties. The path corridor is bordered on the east and west by expansive areas of wetlands.
- The trail then diverges from the path through woods southwesterly to the northeast corner of lot 1. There are two options for traversing the Meghan Lane subdivision.
  - Option 1 continues through woods along the rear property line of the subdivision, and then southwesterly along a path offset from the subdivision.
  - Option 1 bends to the west within a cleared path, and then south through woods (to avoid wetlands).
  - Option 1 then bends west at the Lake and Shore property along a traveled path, and across an ACE easement.
  - Option 1 turns southwest through the Lake and Shores property and follows the perimeter of the surface mine pond, proceeding southeast adjacent to the Pierson property, all through wooded area.
  - Finally, Option 1 continues along the south side of the Lake and Shore Campground, through a short length of wooded area to Corsons Tavern Road.
  - Option 2 proceeds along the easterly lot 1 boundary to the Thicket Road cul-de-sac, and follows the east side of Meghan Lane on road.
  - Option 2 continues along a wooded path from Meghan Lane southwesterly and then southeasterly to Corsons Tavern Road, south of the Resort Seasonal Park.
- Since Options 1 and 2 noted above were not received positively by residents of the Meghan Lane subdivision, a third route segment has been added with the knowledge it traverses through highly sensitive wetlands.

- Option 3 diverges from the wooded path on the southerly Plantation Enterprises property and proceeds west and then southwest through wooded area within US Fish and Wildlife property. Option 3 merges with Option 1 at a cleared path discussed in bullet 2 of Option 1 above.
- The above options all proceed westerly along the north side of Corsons Tavern Road (one lane each way with 8' wide shoulders). The ROW for the road segment 40', 53, and 54', none of which are wide enough to include a buffer-separated trail. The north side is desired to avoid two road crossings. The trail will need to be constructed along the existing shoulder with a potential paved cartway widening. It is possible there can be a barrier-separated design implemented for this segment depending on the trail width (6' to 10'). The crossing at the signalized Woodbine Ocean View Road will need to include a cycle for bicycle and pedestrian crossing.
- The route turns off-road northwesterly along the southern side of the Sea Quest Enterprises property on the Sea Quest side of the fence. This segment is wooded until it extends the parcel known as 5 Woodstock Drive, Dennis Twp.
- The path continues from the private property across another ACE easement onto a Dennis Township owned property along the south side of Seashore Line Campers Resort.
- The route diverges from the cleared path through woods and crosses Kings Highway (one lane each way with 3' wide shoulders). A flashing beacon is recommended as the highway bends slightly to the south of the crossing.
- The route continues southwest through woods to the unimproved segment of the Woodbine Blvd ROW, and turns south. Woodbine Boulevard becomes improved with a 22' to 24' wide paved cartway north of Gracetown Road and is located within a 100' wide ROW. The paved cartway does not have defined lanes or shoulders. The trail will follow the east side of the road. The northern portion of the segment may be able to be buffer-separated due to the wider ROW.
- The ROW narrows to 33' at nearing the Dennis Township trailhead requiring an on-road segment prior to the connection to the trailhead.

## **4.2 TRAILHEADS**

Trailheads are designated locations where access to the trail is provided. Trailheads often include vehicle and bicycle parking and can also serve as rest areas with amenities such as restrooms, benches, and kiosks. Providing trailheads at regular intervals can help maximum public use of the trail, particularly for those who may not be able to arrive on foot or bicycle.

This plan includes six candidate locations for trailheads listed below and illustrated in **Figure 12a**:

1. **Rail Crossing at Tuckahoe Road:** There is an opportunity for a small parking lot on the Cedar Villas Inc. property at the southeast corner of the rail crossing. Vertical and horizontal sight lines to the location are good.
2. **Rail Crossing at Butter Road:** Upper Township owns the undeveloped lot at the southwest corner of the crossing. There is ample space to accommodate parking and other amenities including a public restroom as desired. Sight lines to the location are good.
- 3A. **ACE easement crossing of S.R. 50:** US Fish and Wildlife owns the parcel to the southwest of the crossing. A portion of the lot frontage to NJ State Route 50 appears to contain wetlands. The



southeast parcel is owned by Second Cape May Baptist Church with ample open space at the intersection. Rt. 50 is a higher traffic road, but the sight lines to the location are very good.

- 3B. ACE crossing of Tyler Road is a potential alternate to the crossing at NJ State Route 50 due to its close proximity. This would require land acquisition for the portion of the residential parcel south of the ACE easement known as 60 Tyler Road, Upper Twp. This portion of the parcel is undeveloped with the residence located on the north side of the easement. Roadway sight distances in both directions are good.
4. Corsons Tavern Road at Woodbine Ocean View Road: The lots on the northeast and northwest corners of the intersection are both owned by Atlantic City Electric and offer ample space for a trailhead with amenities including a public restroom. The intersection is signalized.
5. Crossing at Kings Highway: The parcels on the southeast and southwest of the crossing are owned by Dennis Township and offer ample space for parking with amenities.



Figure 12a. Proposed Trail Network  
Data Sources: NJOGIS

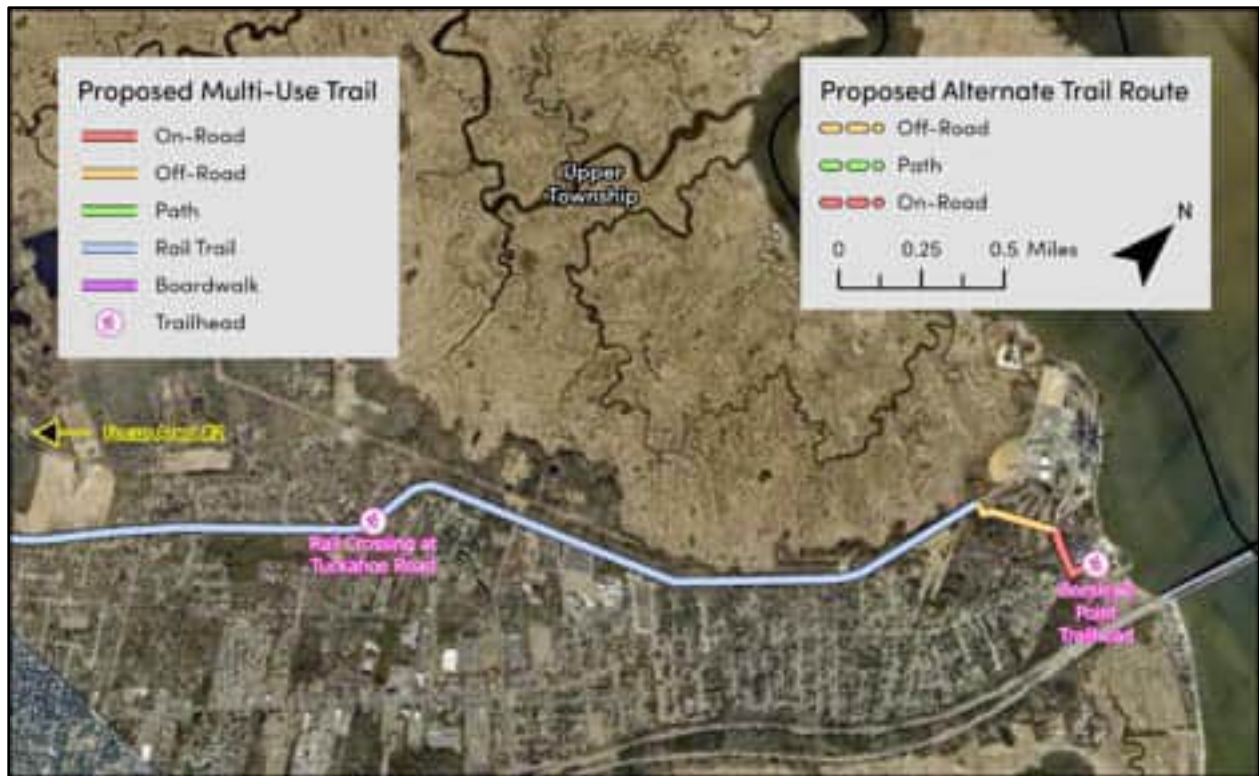


Figure 12a-1. Focus Area #1 of Proposed Trail Network  
Data Sources: NJGIS

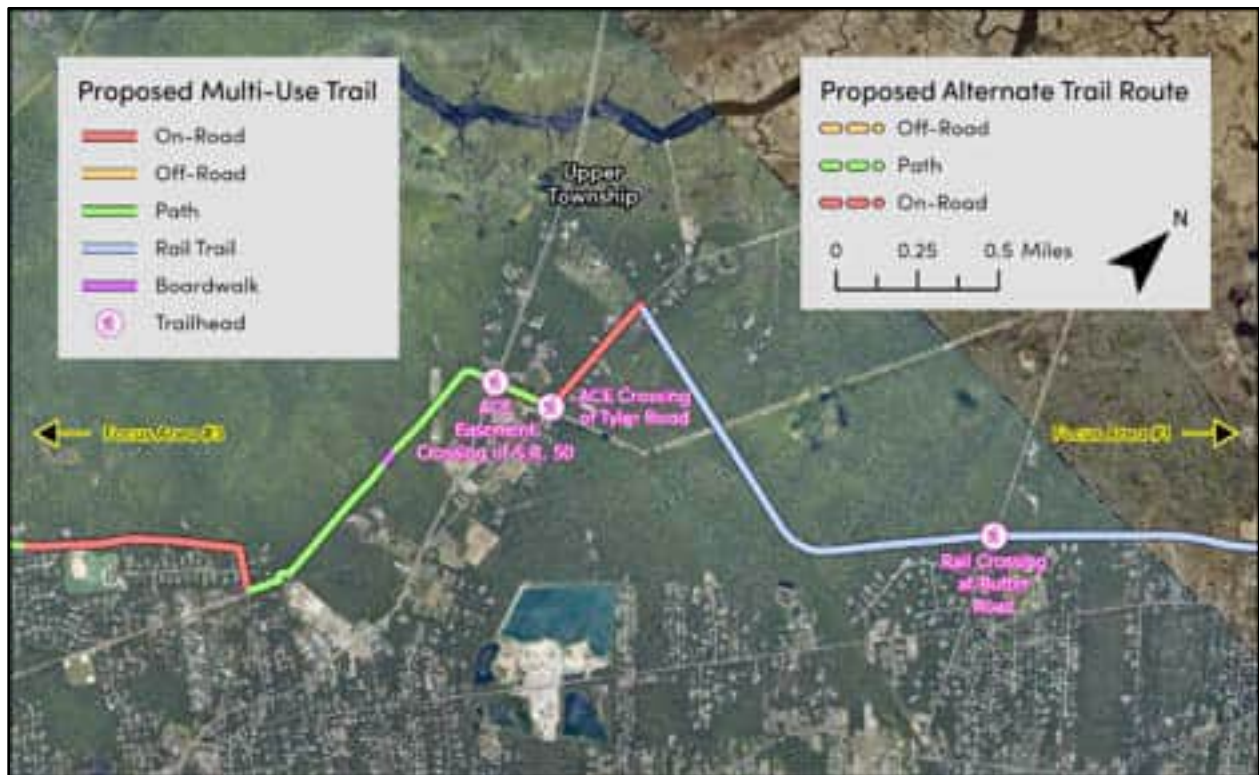


Figure 12a-2. Focus Area #2 of Proposed Trail Network  
Data Sources: NJGIS

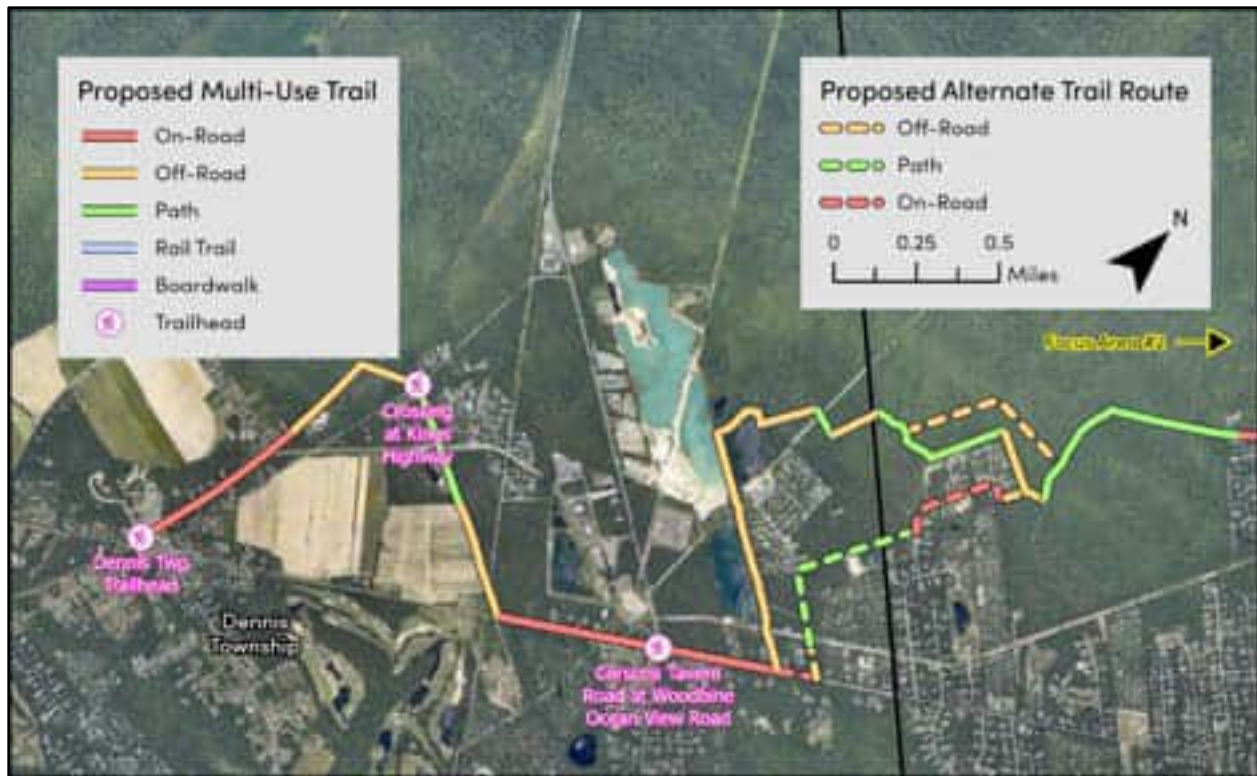


Figure 12a-3. Focus Area #3 of Proposed Trail Network  
Data Sources: NJGIS

### 4.3 OPINION OF CONSTRUCTION COST

This engineer's opinion of construction cost has been developed for the preferred trail alignment as illustrated below. This opinion of cost includes the Meghan Subdivision option 1 as defined in Section 4.0, and the two alternates will not substantially impact the construction cost. The primary purpose of this planning level estimate is to guide the future phases of the project as the project likely will not be constructed in one phase due to budgetary constraints. It is anticipated the overall 13.7-mile trail will be constructed in five segments (Figure 13). These are:

1. Beesley's Point Trailhead to Rail crossing of Tuckahoe Road
2. Rail crossing at Tuckahoe Road to Rail/Trail connection at Tyler Road
3. Rail/Trail connection at Tyler Road to Trail connection with Peach Orchard Road
4. Trail connection at Peach Orchard Road to Trail connection at Corsons Tavern Road
5. Trail connection at Corsons Tavern Road to the Dennis Township Trailhead

These segments were selected without an understanding of the anticipated funding to be obtained for each phase. The segments were selected to divide the trail into sections for which funding can be obtained to complete the designated section, with separate bids to be obtained for the five segments. The trail segment phases are not fixed and may be further subdivided based on the funding to be received.

The two trail segments extending from the Beesley's Point trailhead are almost entirely all rail to trail, while the remaining three segments are a combination of on-road, off road path, and off road wooded.

Full details related to the opinion of cost are included as Appendix D and are summarized as follows:

Segment	Cost w/o Contingencies	Cost w/ Contingencies	Total including Softcosts and CA
1	\$2,182,200	\$2,836,860	\$3,546,075
2	\$2,945,200	\$3,828,760	\$4,785,950
3	\$1,354,220	\$1,760,486	\$2,200,608
4	\$2,756,460	\$3,583,398	\$4,479,248
5	\$1,874,460	\$2,436,798	\$3,045,998

Note: Soft costs include anticipated permit application fees

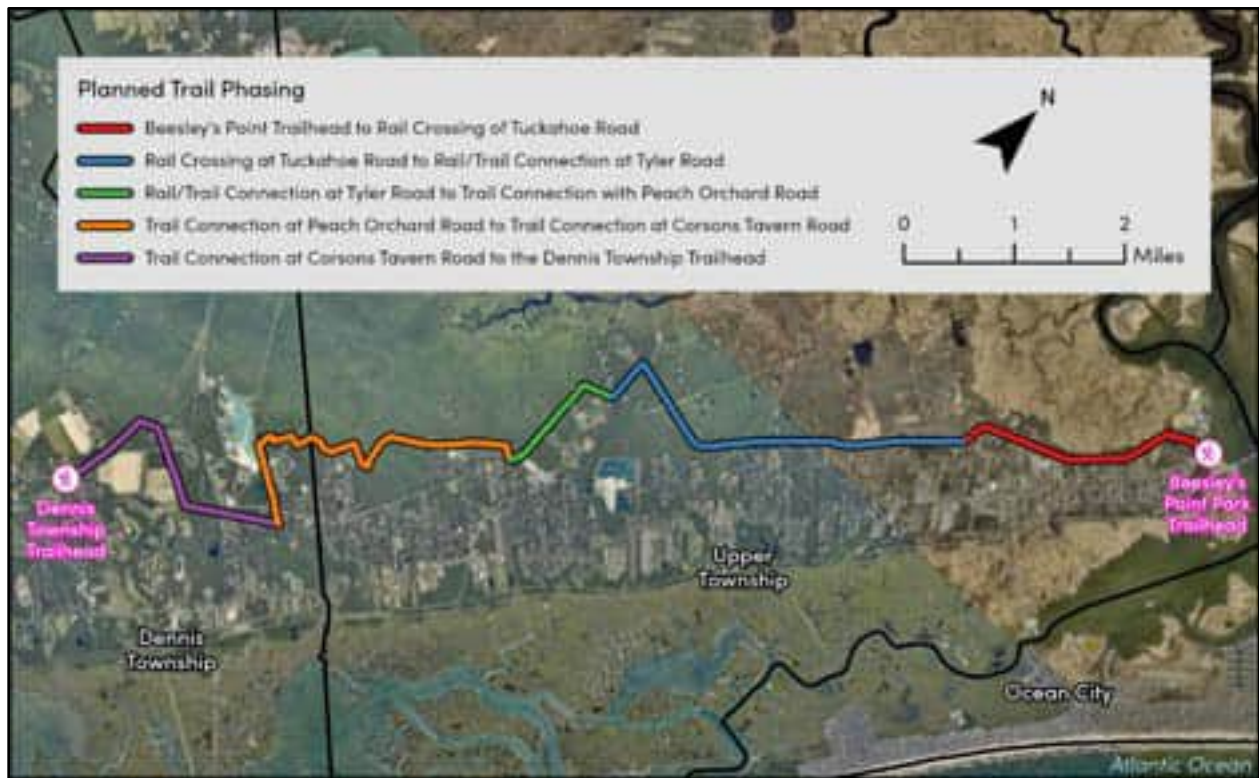


Figure 13. Planned Trail Phasing  
Data Sources: NJGIS

## **5.0 NEXT STEPS**

This feasibility study is a planning effort and did not include actual agreements with NJ Transit, Conrail, or ACE for construction of the trail within their easements/ROWs, or any permits with the regulatory agencies having jurisdiction. The need for easements on private property was also not specifically defined or negotiated with the property owners. The potential for ROW acquisition was not discussed with any of the agencies governing said ROWs, and the need for ROW acquisition is not intended to be necessary.

The trail design and entitlement process will need to consider the following next steps:

### **5.1 FOCUS SEGMENT 1 – Beesley’s Point Trailhead to Trail Connection with Peach Orchard Road**

This segment includes long stretches within NJ Transit right-of-way and Atlantic City Electric easements.

#### **5.1.1 Planning/Design Considerations**

- The rail is largely inactive, but understandably, the rail stakeholders are not ready to abandon the potential for future rail use altogether. The SJTPO and Cape May County consider the use of the rail as paramount to the overall project. The trail cannot be situated next to the rail within the ROW due to the preponderance of wetlands along both sides of the raised rail platform. The act of securing the rail for conversion to the trail will likely require the County to solicit the services of local and County political officials in support of the trail to negotiate this transaction.
- The planning process completed as part of this feasibility assessment included a request of Atlantic City Electric to explain the process by which a permanent trail could be permitted within the easement. Since this is an easement, and not a ROW, ACE has pulled the title reports for the individual properties included within the route. The rights of the easement will need to be modified for each of these properties. The properties through which the ACE easement crosses is included as Appendix A.
- Coordinate the use of the abandoned B. L. England golf course.
- Coordinate Cape May County for the portion of trail within the Tyler Road (C.R. 616) ROW and the crossings of C.R. 602 and 637.
- Coordinate with the NJDOT for the crossing of State Route 50.
- A portion of the trail within the ACE easement traverses marsh wetlands within US Fish and Wildlife lands and will likely need to be elevated boardwalk. Coordination with the NJDEP and US Fish and Wildlife will be required to determine the appropriate design and permitting for this boardwalk portion, as well as several other trail segments located proximal to wetlands, and likely within wetlands buffers.
- Coordinate with the NJDEP for trail segment locations within vernal pool radii of protection.
- Coordinate with SHPO for potential impacts to architectural and archeological cultural resources.

### **5.2 FOCUS SEGMENT 2 – Trail Connection with Peach Orchard Road to Dennis Township Trailhead**

This segment includes on-road, off-road path and off-road wooded routes. This segment also includes

three options for traversing through/around the Meghan Lane subdivision.

### 5.2.1 Planning/Design Considerations

- Coordination with the residents of the Meghan Lane residential subdivision will be critical. Route options 1 and 2 contemplate traversing the perimeter boundary of the subdivision, or share the road using Thicket Street and Meghan Lane. The residents were opposed to both options. Option 3 routes the trail farther away from the subdivision, through US Fish and Wildlife properties, which was analyzed after the Town Hall meeting and has not been presented to the residents. Further investigation of this option is required with U.S. Fish and Wildlife and the NJDEP to determine the feasibility due to the need for disturbance to sensitive wetlands.
- Coordinate with Cape May County for the crossing of Woodbine Ocean View Road (C.R. 550).
- Coordinate with Lake and Shore Campground to follow its southwesterly property boundary. The campground owners are generally not in favor of the trail near the seasonal campgrounds.
- Coordinate with the NJDEP will be required to determine the appropriate design and permitting for trail segments located proximal to wetlands, and likely within wetlands buffers.
- Coordinate with the NJDEP for trail segment locations within vernal pool radii of protection.
- Coordinate with SHPO for potential impacts to architectural and archeological cultural resources.

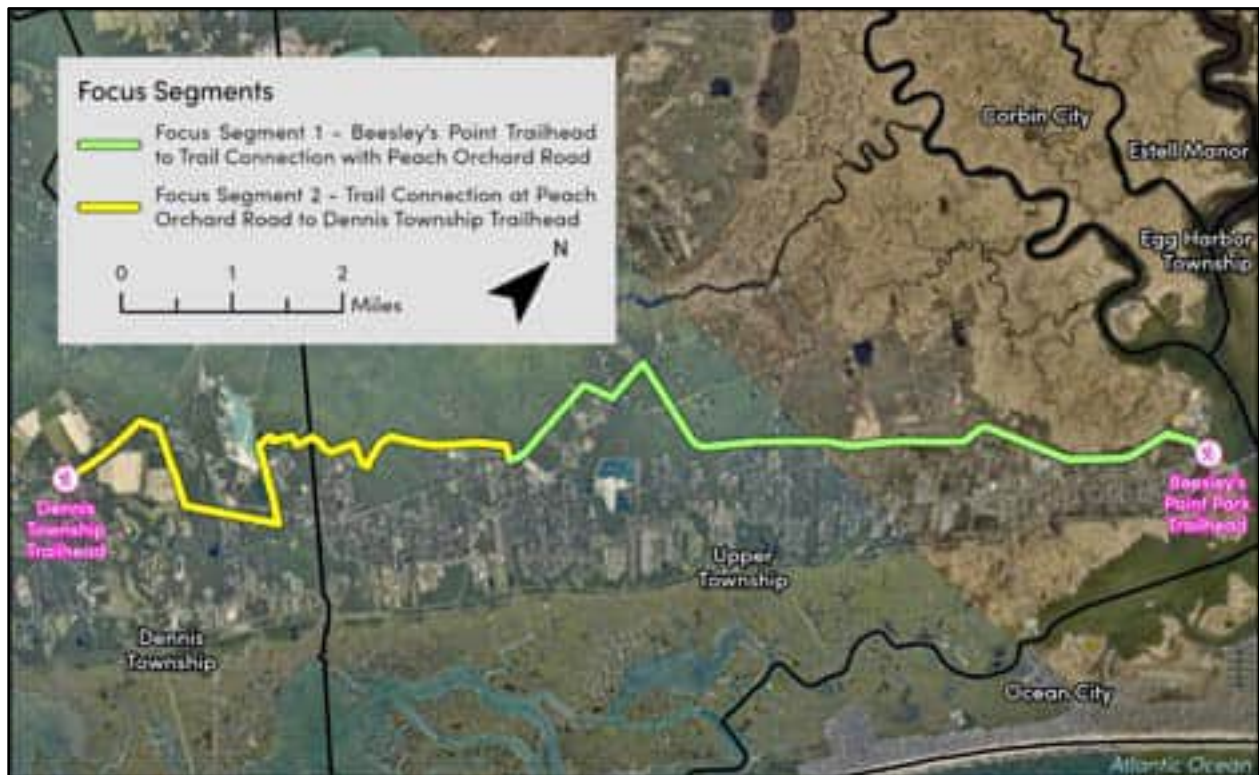


Figure 14. Focus Segments  
Data Sources: NJOGIS

## Appendix A.

**SJTPO - CAPE MAY COUNTY TRAIL PLANNING  
TRAIL PARCEL LIST**

	BLOCK	LOT	QCODE	MOD4T1PLOC	MOD4T1ONA	MOD4T1OST1	MOD4T1OCIT	MOD4T1ZIP	MOD4T1PCLA
				PROPERTY ADDRESS	OWNER NAME	OWNER ADDRESS			PROP CLASS
1	682	1		1 HARBOR RD	KOBE CORP	1 HARBOR RD	BEESELYS POINT, NJ	08223	4A
2	479	76		900 NORTH SHORE RD	BEESELY'S POINT DEVELOPMENT GROUP	5857 FISHER RD	EAST SYRACUSE, NY	13057	4B
3	661	81		RAILROAD CORRIDOR	ATLANTIC CITY ELECTRIC CO R/E DEPT	5100 HARDING HWY #100	MAYS LANDING, NJ	083300100	1
4	901	4		RAILROAD	NJ TRANSIT	POB 10009	NEWARK, NJ	07101	5A
5	901	3		RAILROAD	NJ TRANSIT	POB 10009	NEWARK, NJ	07101	5A
6	901	2		RAILROAD	NJ TRANSIT	POB 10009	NEWARK, NJ	07101	5A
7	901	1		RAILROAD	NJ TRANSIT	POB 10009	NEWARK, NJ	07101	5A
8	900	18		RAILROAD	NJ TRANSIT	POB 10009	NEWARK, NJ	07101	5A
9	548	10		60 TYLER RD	MYERS, BRUCE W JR & CATHERINE	60 TYLER RD	OCEAN VIEW, NJ	08230	3A
10	548	9		TYLER RD	SECOND CAPE MAY BAPTIST CHURCH	600 RT US 9 SO	PALERMO, NJ	08223	1
11	453	169		194 RT 50	USA FISH & WILDLIFE SERVICE	300 WESTGATE CENTER DR	HADLEY, MA	010359589	15C
12	453	175.02		190 RT 50	COUNTY OF CAPE MAY	4 MOORE RD	CAPE MAY CH, NJ	08210	15C
13	453	171.01	QFARM	166 RT 50	MASON,DAVID & LISA	166 RT 50	OCEANVIEW, NJ	08230	3B
14	453	171.02		RT 50	USA FISH & WILDLIFE SERVICE	300 WESTGATE CTR DR	HADLEY, MA	01035	15C
15	453	155		RT 50 REAR	USA FISH & WILDLIFE SERVICE	300 WESTGATE CENTER DR	HADLEY, MA	010359589	15C
16	453	172		RT 50 REAR	USA FISH & WILDLIFE SERVICE	300 WESTGATE CENTER DR	HADLEY, MA	010359589	15C
17	453	174		PEACH ORCHARD RD REAR	USA FISH & WILDLIFE SERVICE	300 WESTGATE CENTER DR	HADLEY, MA	010359589	15C
18	453	176		140 RT 50	PATTERSON, JOSEPH R	144 TYLER RD	GREENFIELD, NJ	08270	3A
19	453	177.03		118 RT 50	SCHULTHEIS, CRAIG	PO BOX 104	STRATHMERE, NJ	08248	1
20	453	288.12		38 CALEDONIA DR	MERLINO, TIMOTHY J & JULIA	92 RT 50	SEAVILLE, NJ	08230	2
21	453	275		PEACH ORCHARD RD	TOWNSHIP OF UPPER	BOX 205	TUCKAHOE, NJ	08250	15C
22	453	264.01		CORSON TAVERN RD	USA FISH & WILDLIFE SERVICE	300 WESTGATE CENTER DR	HADLEY, MA	01035	15C
23	453	225		PEACH ORCHARD	USA FISH & WILDLIFE SERVICE	300 WESTGATE CENTER DR	HADLEY, MA	010359589	15C
24	453	262		60 CORSON TAVERN RD	PLANTATION ENTERPRISES INC	PO BOX 604	OCEAN VIEW, NJ	08230	4A
25	453	260		60 CORSON TAVERN RD	PLANTATION ENTERPRISES INC	PO BOX 604	OCEAN VIEW, NJ	08230	4A
26	453	259.59		CLAYTON DR (REAR)	PLANTATION ENTERPRISES, INC	P O BOX 604	OCEAN VIEW, NJ	08230	1
27	453	240.11		CEDAR SWAMP	SCHIEMER, BRETT & URBANO, ANTHONY	3 THICKET ST	SEAVILLE, NJ	08230	1
28	453	240.24	Q0018	MEGHAN LANE	GERMANIO, JOHN JAMES	P O BOX 545	WOODBINE, NJ	08270	3B
29	453	238		PEACH ORCHARD SWAMP	USA FISH & WILDLIFE SERVICE	300 WESTGATE CENTER DR	HADLEY, MA	010359589	15C
30	224	72		CORSON TAVERN RD-REAR	MHC LAKE & SHORE,LLC C/O KROLL	917 W WASHINGTON MS 316	CHICAGO, IL	60607	1
31	224	79		515 CORSON TAVERN RD	MHC LAKE & SHORE,LLC C/O KROLL	917 W WASHINGTON MS 316	CHICAGO, IL	60607	4A
32	224	76		350 WOODBINE-OCEANVIEW RD	ATLANTIC CITY ELECTRIC CO R/E DEPT	5100 HARDING HWY	MAYS LANDING, NJ	08330	4A
33	225.01	2		333 CORSON TAVERN RD	SEA QUEST ENTERPRISES, LLC	PO BOX 607	OCEAN VIEW, NJ	08230	1
34	247	13		KINGS HWY - REAR	DOUGHERTY, KEVIN	5 WOODSTOCK DR	LINWOOD, NJ	08221	1
35	247	10		668 KINGS HWY	TOWNSHIP OF DENNIS	571 PETERSBURG RD	DENNISVILLE, NJ	08214	15C
36	248	13		641 KINGS HWY	TOWNSHIP OF DENNIS	571 PETERSBURG RD	DENNISVILLE, NJ	08214	15C



## Appendix B.



## **MEMORANDUM**

**TO:** Ms. Genevieve Sarlo (USACE)  
**FROM:** Chad Gaulrapp, PE, CME  
**DATE:** September 22, 2023

**SUBJECT:** JPPM Meeting Summary  
Cape May County Regional Trail Network Project  
Cape May County, NJ  
TLCG Fil #22-1136

---

### **ATTENDEES:**

Genevieve Sarlo (USACE – Regulatory Branch)  
Robert Bourdon (NOAA – NMFS/Habitat and Ecosystem Services)  
Robin Donohue (USFWS - Cape May Wildlife Refuge)  
Ryan Carter (NJDEP - OPPN)  
Madison Battle (NJDEP - OPPN)  
Louis Tallone (NJDEP – OTPLA)  
Kelly Davis (NJDEP – F&W)  
Ryan Anderson (NJDEP - FWW)  
Alison Astalos (NJDEP - Coastal Unit) – Not on call  
Branwen Ellis (NJPC)  
Zach Jordan (CME – Upper Township Engineer)  
Scott Mullen (CMC – Principal Planning Aide)  
Ronald Simone (CMC – Deputy Administrator)  
Leslie Gimeno (CMC – Planning Director)  
Chad Gaulrapp (Pennoni – Project Engineer)  
Peter Lomax (TLCG – Environmental Consultant)  
Aaron Baker (TLCG – Environmental Consultant)

### **Project Scope and Route Review**

Chad Gaulrapp (Pennoni – Project Engineer for SJTPO and Cape May County)

- 12.7 mile proposed bike path segment to link existing routes in CMC and routes in Atlantic County that extend to Camden, NJ.
- Proposed trail segment begins at the existing trail head in South Seaville and extends to the existing trailhead at Beesley’s Point.
- Original study area was a wide swath between the two trailheads, and the proposed route is result of extensive planning effort analyzing and eliminating options.
- This planning effort is intended to establish the most feasible and beneficial route, not preparing design or requesting permitting.



- Effort to keep route off roads (safety considerations and consistency of experience), but results in potential increased impacts to environmental areas.
- Makes use of existing railroad and old fire roads/trails as much as possible.
- Alternate routes were reviewed, and the best/most feasible options are as presented on the GIS link.
- Coordination has occurred throughout the process with USFWS who owns a number of parcels in the proposed trail alignment. There are no State-owned lands in the study area.
- The planning team has analyzed on-road vs off-road vs established woodland paths vs boardwalk vs rail trail.
- Shared travel lane is the least desirable but may be used where necessary.
- Crossing through campgrounds and mining operations are not feasible, forcing the route to use Corson Tavern Road.
- Wetlands delineated by TLCG is in proximity to the proposed trail route in multiple locations.
- PLL – TLCG reviewed wetland resources and mapping, then refined limits through site investigations and GPS delineations.
  - The route in large part, avoids delineated wetlands except for where a crossing is necessary.
  - Coordination has occurred with USFWS with regard to crossing wetlands.
- The approximate wetlands limit has not yet been verified and buffer disturbance is expected.
- The proposed trail alignment was presented to the public in a town hall style engagement for both Dennis and Upper Township residents. The majority of opposition to the alignment came from the Meghan Lane/Thicket Street neighborhood residents expressing concerns with nuisances that could be generated by the trail.
  - Residents were opposed to on-road and rear yard perimeter options.
  - An alternate route was evaluated and included in the JPPM presentation which forces the trail into environmentally constrained, Federally owned lands.
  - Planning team requesting guidance from wetland regulators for this area in particular, and alternate routes.
- Trail route makes use of existing paths moving north and then on-road through the Peach Orchard neighborhood.
- North of Peach Orchard, route follows ACE easement (powerlines)
- Wetlands cross easement in one section and boardwalk crossing is proposed.
- Route turns north at Tyler Road with an on-road section then connects to rail line. This avoids a land use conflict (rifle range) within the ACE easement.
- Route proposed within railbed from Tyler Road to Beesley Point; owner has not yet been contacted.
- For majority of the rail, if route needed to be installed “adjacent” to rail rather than on the rail, it would involve significant wetland disturbance.
- Use of railroad allows for direct connection to the bike path and Upper Twp communities, parks, and schools.
- Route crosses a non-active golf course and then terminates at Beesley’s Point trailhead.

Leslie Gimeno (CMC Planning Director)

- This bike path is a critical missing link to the Cape May County trail system which has developed incrementally over 20+ years and now has 17.2 miles off-road dedicated bike path leading from Ferry Road in Lower Township to South Seaville in Dennis Township.



- Existing trails south of the trailhead are primarily within the ACE easement, keeping bicyclists and pedestrians off roads. Safety is a primary goal, but challenges are faced with the proposed trail segment presented.
- Seasonal fluctuations due to tourism economy impacts traffic volumes and poses public safety risk should the proposed trail occupy highly traveled roadways. Trail users have an expectation of separation from the road given the balance of the constructed trail system in Cape May County.

#### Peter Lomax (Lomax Consulting Group)

- Consultation with NPS has been completed.
  - NPS confirmed no interest in project; impacts to Wild Scenic Rivers are not a concern.
  - Include “no interest” documentation in any submission to USACE.
- Is a separate pre-app necessary with NJDEP?
  - Ryan Carter – Pre-app not necessary but can be scheduled if requested.
  - Ok to coordinate directly with NJDEP staff for any further questions.

#### Regulatory Agency Comments

##### Kelly Davis (NJDEP - F&W)

- For wetlands in Landscape Project valued areas for Copes Gray Treefrog, a construction restriction of May 1 to Sept 30 will apply. A Bald Eagle nest exists near northern trail segment, requiring a construction restriction of Dec 15 to July 31.
- Anadromous fish construction restrictions will apply for possible for stream crossings (May/June/July timing restriction), if any are proposed.
- Make sure to address why other alternate routes were not viable in areas where on-road is proposed (Pierson Mine/ACE crossing and Tyler Road/ACE easement/Rail Line sections).
- For tree clearing/trimming, expect a construction restriction for nesting birds and Northern long-eared bat (April 1 to September 30).
- BMPs to be followed for construction, staging, and scheduling as well as minimization of encroachment into rare and listed species and wildlife habitats.

##### Louis Tallone (NJDEP - OTPLA)

- If route crosses State owned land:
  - Need a lease and form filed with NJDEP
    - <https://dep.nj.gov/otpla/requests-for-use-of-njdep-property/>
  - Longest and standard lease is 20 years
    - Renewable provisions available

##### Branwen Ellis (NJPC)

- Could easements be used starting at the end of Woodbine Road?
  - Route makes use of existing dirt roads and avoids crossing private property.
- Trail width/surface?
  - 10-foot wide bituminous surface, with sections of boardwalk where necessary.
- For Pinelands, the CMP requires that the applicant clearly demonstrate that there are not any feasible alternates for routes that cross through wetlands and wetlands buffers, particularly focused on the Meghan Lane/Thicket Street segment.



- Pinelands would only be commenting to NJDEP, and would not conduct its own review.
- Route is located in National Reserve, not in the Protection Area.

#### Ryan Anderson (NJDEP – FWW)

- FWW GP 17A allows for disturbance to wetlands and transition areas.
  - Only has a ¼ Ac. limit for disturbance and intended for smaller sites, not regional trails.
- GP17 does not have a limit on disturbance and the Department has used the 17 to authorize larger trail projects such as this in the past.
  - Recommend applying for the GP17, but must demonstrate the need for 10-foot wide path, which exceeds the 6' width permitted design standard (ADA compliance).
- Make sure to use existing trails and disturbed areas as much as possible.
- Recommend contacting T&E Unit for any new trails that need to be constructed.
- Public opposition not normally a concern.
- Alternatives analysis would not be required for a GP application; however, alternatives discussion will be important to address listed species concerns in order to satisfy the T&E Unit. If not, listed species impacts could preclude the use of a GP17, thereby requiring an IP which would force an alternatives analysis and more comprehensive FWW authorizations.
- Initial impression is that DEP and primarily T&E unit would not respond favorably to a route that crosses through wetlands in sensitive areas where alternatives exist.
- No mitigation requirement for the GP17.
- If the trail is the first improvement within 150' of the MHWL, the project will potentially be regulated by CAFRA.
  - See CGP13
  - Need to collaborate with Janet Stewart to confirm CAFRA applicability.
- Route doesn't cross any mapped streams but is located in flood hazard areas (northern section of proposed trail).
  - FHA IP likely applicable as the GP for bike paths states not for "major development".
  - Riparian zone disturbance limits would be applicable.
  - Length of the entire path taken into account when calculating allowable riparian zone disturbance limits (10 SF per 1 LF of trail).
- Stormwater management will need to be addressed, likely through stone lined swales and pervious paving where appropriate.

#### Ryan Carter (NJDEP - OPPN)

- SHPO had comment but Jesse West-Rosenthal (SHPO) could not attend and requested a follow-up consult regarding the railroad segment of the proposed trail.
- Ryan would be the main contact if pre-app with NJDEP is necessary.
  - Complete a Readiness Checklist for pre-app with NJDEP.
    - <https://dep.nj.gov/oppn/permit-readiness-checklist/>

#### Genevieve Sarlo (USACE)

- Need to submit an JD request for the project.
  - Include entire trail in AJD submission. USACE reviewer would then identify which wetlands will need to be verified via the AJD, as opposed to those covered by the Section 404 program assumption by NJDEP.



- Wetlands within 1,000 feet of HTL under USACE jurisdiction.
  - Identify in AJD submission which wetlands are potentially under USACE regulation.
  - If trail crosses USACE regulated wetlands that would require installation of piles (piles are not considered fill by USACE), a Letter of Permission (LOP) would be required.
  - If fill placement in wetlands is required, would elevate project to an IP.
- In areas where NJDEP has assumed jurisdiction, USACE permitting would not be necessary.
- If no disturbance in USACE regulated wetlands, then no further permitting from USACE is necessary.
- Following submission of a permit application to USACE
  - USACE would conduct their own historic review and consultation with other federal agencies.

#### Robin Donohue (USFWS – Cape May Wildlife Refuge)

- Wildlife refuge may potentially own portions of the lot on the north side of the Thicket Street neighborhood (Germanio property).
  - Robin to confirm ownership
  - Could allow for primary alignment to remain
- Special use permit will be necessary with USFWS for trail to exist on USFWS land.
  - Unlikely for an easement to be approved, process could take years.
  - Instead, Special Use Permits (valid for 5 years) cover construction and repairs.
- A Memorandum of Understanding (MOU) will need to be executed by USFWS and trail operator (municipality and/or County) for long-term trail maintenance responsibility and use.
- Provide a map to Cape May National Wildlife Refuge manager once a final alignment is proposed for project implementation. Once final alignment is received, USFWS will:
  - Initiate internal EA and ESA processes;
  - EA/ESA will rely largely on supporting information provided by the applicant as will be used for land use permitting.

#### Rob Bourdon (NOAA- NMFS/HES)

- No apparent mapped waterway crossings and proposed wetland crossings do not appear to adversely impact NOAA-managed marine species.
- No concerns at this time with the proposed project.
- Formal application for Federal agency review needs to include discussion of avoidance/minimization to FWW/aquatic resources.

#### Action Items

1. Contact Alison Astalos/Janet Stewart for DLRP comments and potential for CZMR regulated activity. If so a CGP13 could be required.
2. Email Jesse West-Rosenthal for SHPO comments about project.
3. Contact FHA/Stormwater staff at NJDEP for project/regulatory feedback.
4. Review alignment for State-owned land encroachment that would require OTPLA engagement.
5. Confirm ownership of Block 453, Lot 240.24 in Upper Township (Germanio or USFWS).

## Appendix C.

Department of Environmental Protection  
**Office of Natural Lands Management**  
 Mail Code 501-04, P.O. Box 420  
 Trenton, New Jersey 08625-0420  
 Tel. (609) 984-1339; Fax. (609) 984-1427



# ***Invoice***

	Date	Invoice #
	8/1/2022	25465

Bill to:  
 The Lomax Consulting Group, LLC  
 P.O. Box 9 - 1435 Route 9 North  
 Cape May Court House, NJ 08210

**Make check payable to:**  
 DEP - Office of Natural Lands Management

**Include this invoice with payment & send to:**  
 NJDEP Office of Natural Lands Management  
 Mail Code 501-04, P.O. Box 420  
 Trenton, New Jersey 08625-0420

Quantity (hrs.)	Description	Rate (per hr.)	Amount
1	Natural Heritage Database search for locational information of rare species and ecological communities. Project: 22-3907427-25465	\$ 70.00	\$ 70.00
Charles P. Williams Project Name: SJTPO - Regional Trail (Dennis Township Option A)		<b>Total</b>	\$ 70.00





State of New Jersey

MAIL CODE 501-04

DEPARTMENT OF ENVIRONMENTAL PROTECTION

STATE PARKS, FORESTS & HISTORIC SITES

OFFICE OF NATURAL LANDS MANAGEMENT

501 East State Street

P.O. Box 420, Mail Code 501-04

Trenton, NJ 08625-0420

Tel. (609) 984-1339 • Fax (609) 984-0427

PHILIP D. MURPHY

Governor

SHEILA Y. OLIVER

Lt. Governor

SHAWN M. LATOURETTE

Commissioner

August 1, 2022

Charles P. Williams  
The Lomax Consulting Group, LLC  
P.O. Box 9 - 1435 Route 9 North  
Cape May Court House, NJ 08210

Re: SJTPO - Regional Trail (Dennis Township Option A)  
Various road, powerline and railroad ROWs  
Dennis Township, Cape May County

Dear Mr. Williams:

Thank you for your data request regarding rare species information for the above referenced project site.

Searches of the Natural Heritage Database and the Landscape Project (Version 3.3) are based on a representation of the boundaries of your project site in our Geographic Information System (GIS). We make every effort to accurately transfer your project bounds from the map(s) submitted with the Natural Heritage Data Request Form into our GIS. We do not typically verify that your project bounds are accurate, or check them against other sources.

We have checked the Landscape Project habitat mapping and the Biotics Database for occurrences of any rare wildlife species or wildlife habitat on the referenced site. The Natural Heritage Database was searched for occurrences of rare plant species or ecological communities that may be on the project site. Please refer to Table 1 (attached) to determine if any rare plant species, ecological communities, or rare wildlife species or wildlife habitat are documented on site. A detailed report is provided for each category coded as 'Yes' in Table 1.

We have also checked the Landscape Project habitat mapping and Biotics Database for occurrences of rare wildlife species or wildlife habitat in the immediate vicinity (within ¼ mile) of the referenced site. Additionally, the Natural Heritage Database was checked for occurrences of rare plant species or ecological communities within ¼ mile of the site. Please refer to Table 2 (attached) to determine if any rare plant species, ecological communities, or rare wildlife species or wildlife habitat are documented within the immediate vicinity of the site. Detailed reports are provided for all categories coded as 'Yes' in Table 2. These reports may include species that have also been documented on the project site.

We have also checked the Landscape Project habitat mapping and Biotics Database for all occurrences of rare wildlife species or wildlife habitat within one mile of the referenced site. Please refer to Table 3 (attached) to determine if any rare wildlife species or wildlife habitat is documented within one mile of the project site. Detailed reports are provided for each category coded as 'Yes' in Table 3. These reports may include species that have also been documented on the project site.

For requests submitted in order to make a riparian zone width determination as part of a Flood Hazard Area Control Act (FHACA) rule application, we report records for all rare plant species and ecological communities tracked by the Natural Heritage Program that may be on, or in the immediate vicinity of, your project site. A subset of these plant species is also covered by the FHACA rules when the records are located within one mile of the project site. One-mile searches for FHACA plant species will only report precisely located occurrences for those wetland plant species identified under the FHACA regulations as being critically dependent on the watercourse. Please refer to Table 3 (attached) to determine if any precisely located rare wetland plant species covered by the FHACA rules have been documented. Detailed reports are

provided for each category coded as 'Yes' in Table 3. These reports may include species that have also been documented on, or in the immediate vicinity of, the project site.

The Natural Heritage Program reviews its data periodically to identify priority sites for natural diversity in the State. Included as priority sites are some of the State's best habitats for rare and endangered species and ecological communities. Please refer to Tables 1, 2 and 3 (attached) to determine if any priority sites are located on, in the immediate vicinity, or within one mile of the project site.

A list of rare plant species and ecological communities that have been documented from the county (or counties), referenced above, can be downloaded from <https://nj.gov/dep/parksandforests/natural/heritage/database.html>. If suitable habitat is present at the project site, the species in that list have potential to be present.

Status and rank codes used in the tables and lists are defined in EXPLANATION OF CODES USED IN NATURAL HERITAGE REPORTS, which can be downloaded from [https://nj.gov/dep/parksandforests/natural/docs/nhpcodes\\_2010.pdf](https://nj.gov/dep/parksandforests/natural/docs/nhpcodes_2010.pdf).

Beginning May 9, 2017, the Natural Heritage Program reports for wildlife species will utilize data from Landscape Project Version 3.3. If you have questions concerning the wildlife records or wildlife species mentioned in this response, we recommend that you visit the interactive web application at the following URL, <https://njdep.maps.arcgis.com/apps/webappviewer/index.html?id=0e6a44098c524ed99bf739953cb4d4c7>, or contact the Division of Fish and Wildlife, Endangered and Nongame Species Program at (609) 292-9400.

For additional information regarding any Federally listed plant or animal species, please contact the U.S. Fish & Wildlife Service, New Jersey Field Office at <http://www.fws.gov/northeast/njfieldoffice/endangered/consultation.html>.

Information supplied by the Natural Heritage Program summarizes existing data known to the program at the time of the request regarding the biological elements (species and/or ecological communities) or their locations. They should never be regarded as final statements on the elements or areas being considered, nor should they be substituted for on-site surveys required for environmental assessments.

Thank you for consulting the Natural Heritage Program. The attached invoice details the payment due for processing this data request. Feel free to contact us again regarding any future data requests.

Sincerely,



Robert J. Cartica  
Administrator

c: NHP File No. 22-3907427-25465

**Table 1: On Site Data Request Search Results (6 Possible Reports)**

<b><u>Report Name</u></b>	<b><u>Included</u></b>	<b><u>Number of Pages</u></b>
1. Possibly on Project Site Based on Search of Natural Heritage Database: Rare Plant Species and Ecological Communities Currently Recorded in the New Jersey Natural Heritage Database	No	0 pages included
2. Natural Heritage Priority Sites On Site	Yes	See emailed attachments
3. Rare Wildlife Species or Wildlife Habitat on the Project Site Based on Search of Landscape Project 3.3 Species Based Patches	Yes	2 page(s) included
4. Vernal Pool Habitat on the Project Site Based on Search of Landscape Project 3.3	No	0 pages included
5. Rare Wildlife Species or Wildlife Habitat on the Project Site Based on Search of Landscape Project 3.3 Stream Habitat File	No	0 pages included
6. Other Animal Species On the Project Site Based on Additional Species Tracked by Endangered and Nongame Species Program	No	0 pages included

**Rare Wildlife Species or Wildlife Habitat on the  
Project Site Based on Search of  
Landscape Project 3.3 Species Based Patches**

<b>Class</b>	<b>Common Name</b>	<b>Scientific Name</b>	<b>Feature Type</b>	<b>Rank</b>	<b>Federal Protection Status</b>	<b>State Protection Status</b>	<b>Grank</b>	<b>Srank</b>
<i>Amphibia</i>								
	Cope's Gray Treefrog	<i>Hyla chrysoscelis</i>	Occupied Habitat	4	NA	State Endangered	G5	S1
	Cope's Gray Treefrog	<i>Hyla chrysoscelis</i>	Vernal Pool Breeding	4	NA	State Endangered	G5	S1
	Pine Barrens Treefrog	<i>Hyla andersonii</i>	Vernal Pool Breeding	3	NA	State Threatened	G4	S2
<i>Aves</i>								
	Bald Eagle	<i>Haliaeetus leucocephalus</i>	Foraging	4	NA	State Endangered	G5	S1B,S2N
	Bald Eagle	<i>Haliaeetus leucocephalus</i>	Wintering	3	NA	State Threatened	G5	S1B,S2N
	Barred Owl	<i>Strix varia</i>	Breeding Sighting	3	NA	State Threatened	G5	S2B,S2N
	Black Skimmer	<i>Rynchops niger</i>	Foraging	4	NA	State Endangered	G5	S1B,S1N
	Black-crowned Night-heron	<i>Nycticorax nycticorax</i>	Foraging	3	NA	State Threatened	G5	S2B,S3N
	Brown Thrasher	<i>Toxostoma rufum</i>	Breeding Sighting	2	NA	Special Concern	G5	S3B,S4N
	Cattle Egret	<i>Bubulcus ibis</i>	Foraging	3	NA	State Threatened	G5	S2B,S3N
	Common Tern	<i>Sterna hirundo</i>	Foraging	2	NA	Special Concern	G5	S3B,S4N
	Cooper's Hawk	<i>Accipiter cooperii</i>	Breeding Sighting	2	NA	Special Concern	G5	S3B,S4N
	Glossy Ibis	<i>Plegadis falcinellus</i>	Foraging	2	NA	Special Concern	G5	S3B,S4N

**Rare Wildlife Species or Wildlife Habitat on the  
Project Site Based on Search of  
Landscape Project 3.3 Species Based Patches**

<b>Class</b>	<b>Common Name</b>	<b>Scientific Name</b>	<b>Feature Type</b>	<b>Rank</b>	<b>Federal Protection Status</b>	<b>State Protection Status</b>	<b>Grank</b>	<b>Srank</b>
	Great Blue Heron	Ardea herodias	Foraging	2	NA	Special Concern	G5	S3B,S4N
	Hooded Warbler	Wilsonia citrina	Breeding Sighting	2	NA	Special Concern	G5	S3B,S4N
	Kentucky Warbler	Oporornis formosus	Breeding Sighting	2	NA	Special Concern	G5	S3B,S3N
	Little Blue Heron	Egretta caerulea	Foraging	2	NA	Special Concern	G5	S3B,S3N
	Red-shouldered Hawk	Buteo lineatus	Breeding Sighting	4	NA	State Endangered	G5	S1B,S3N
	Snowy Egret	Egretta thula	Foraging	2	NA	Special Concern	G5	S3B,S4N
	Tricolored Heron	Egretta tricolor	Foraging	2	NA	Special Concern	G5	S3B,S3N
	Wood Thrush	Hylocichla mustelina	Breeding Sighting	2	NA	Special Concern	G4	S3B,S4N
	Worm-eating Warbler	Helmintheros vermivorum	Breeding Sighting	2	NA	Special Concern	G5	S3B,S4N
<b><i>Insecta</i></b>								
	Frosted Elfin	Callophrys irus	Breeding/Courtship	3	NA	State Threatened	G3	S2
<b><i>Reptilia</i></b>								
	Eastern Box Turtle	Terrapene carolina carolina	Occupied Habitat	2	NA	Special Concern	G5T5	S3

**Table 2: Vicinity Data Request Search Results (6 possible reports)**

<b><u>Report Name</u></b>	<b><u>Included</u></b>	<b><u>Number of Pages</u></b>
1. Immediate Vicinity of the Project Site Based on Search of Natural Heritage Database: Rare Plant Species and Ecological Communities Currently Recorded in the New Jersey Natural Heritage Database	Yes	1 page(s) included
2. Natural Heritage Priority Sites within the Immediate Vicinity	Yes	See emailed attachments
3. Rare Wildlife Species or Wildlife Habitat Within the Immediate Vicinity of the Project Site Based on Search of Landscape Project 3.3 Species Based Patches	Yes	2 page(s) included
4. Vernal Pool Habitat In the Immediate Vicinity of Project Site Based on Search of Landscape Project 3.3	No	0 pages included
5. Rare Wildlife Species or Wildlife Habitat In the Immediate Vicinity of the Project Site Based on Search of Landscape Project 3.3 Stream Habitat File	No	0 pages included
6. Other Animal Species In the Immediate Vicinity of the Project Site Based on Additional Species Tracked by Endangered and Nongame Species Program	Yes	1 page(s) included

**Immediate Vicinity of the Project Site  
Based on Search of Natural Heritage Database  
Rare Plant Species and Ecological Communities Currently Recorded in  
the New Jersey Natural Heritage Database**

Scientific Name	Common Name	Federal Protection Status	State Protection Status	Regional Status	Grank	Srank	Identified	Last Observed	Location
-----------------	-------------	---------------------------	-------------------------	-----------------	-------	-------	------------	---------------	----------

***Vascular Plants***

Gentiana autumnalis	Pine Barren Gentian			LP, HL	G3	S3	Y	1934-09-18	1 MI. N. OF SOUTH SEAVILLE, SEA ISLE JUNCTION.
---------------------	---------------------	--	--	--------	----	----	---	------------	--

Total number of records: 1

**Rare Wildlife Species or Wildlife Habitat Within the  
Immediate Vicinity of the Project Site Based on Search of  
Landscape Project 3.3 Species Based Patches**

Class	Common Name	Scientific Name	Feature Type	Rank	Federal Protection Status	State Protection Status	Grank	Srank
<i>Amphibia</i>								
	Cope's Gray Treefrog	Hyla chrysoscelis	Occupied Habitat	4	NA	State Endangered	G5	S1
	Cope's Gray Treefrog	Hyla chrysoscelis	Vernal Pool Breeding	4	NA	State Endangered	G5	S1
	Pine Barrens Treefrog	Hyla andersonii	Vernal Pool Breeding	3	NA	State Threatened	G4	S2
<i>Aves</i>								
	Bald Eagle	Haliaeetus leucocephalus	Foraging	4	NA	State Endangered	G5	S1B,S2N
	Bald Eagle	Haliaeetus leucocephalus	Wintering	3	NA	State Threatened	G5	S1B,S2N
	Barred Owl	Strix varia	Breeding Sighting	3	NA	State Threatened	G5	S2B,S2N
	Black Skimmer	Rynchops niger	Foraging	4	NA	State Endangered	G5	S1B,S1N
	Black-crowned Night-heron	Nycticorax nycticorax	Foraging	3	NA	State Threatened	G5	S2B,S3N
	Brown Thrasher	Toxostoma rufum	Breeding Sighting	2	NA	Special Concern	G5	S3B,S4N
	Cattle Egret	Bubulcus ibis	Foraging	3	NA	State Threatened	G5	S2B,S3N
	Common Tern	Sterna hirundo	Foraging	2	NA	Special Concern	G5	S3B,S4N
	Cooper's Hawk	Accipiter cooperii	Breeding Sighting	2	NA	Special Concern	G5	S3B,S4N
	Glossy Ibis	Plegadis falcinellus	Foraging	2	NA	Special Concern	G5	S3B,S4N
	Great Blue Heron	Ardea herodias	Foraging	2	NA	Special Concern	G5	S3B,S4N



**Rare Wildlife Species or Wildlife Habitat Within the  
Immediate Vicinity of the Project Site Based on Search of  
Landscape Project 3.3 Species Based Patches**

<b>Class</b>	<b>Common Name</b>	<b>Scientific Name</b>	<b>Feature Type</b>	<b>Rank</b>	<b>Federal Protection Status</b>	<b>State Protection Status</b>	<b>Grank</b>	<b>Srank</b>
	Hooded Warbler	Wilsonia citrina	Breeding Sighting	2	NA	Special Concern	G5	S3B,S4N
	Kentucky Warbler	Oporornis formosus	Breeding Sighting	2	NA	Special Concern	G5	S3B,S3N
	Little Blue Heron	Egretta caerulea	Foraging	2	NA	Special Concern	G5	S3B,S3N
	Red-headed Woodpecker	Melanerpes erythrocephalus	Breeding Sighting	3	NA	State Threatened	G5	S2B,S2N
	Red-shouldered Hawk	Buteo lineatus	Breeding Sighting	4	NA	State Endangered	G5	S1B,S3N
	Snowy Egret	Egretta thula	Foraging	2	NA	Special Concern	G5	S3B,S4N
	Tricolored Heron	Egretta tricolor	Foraging	2	NA	Special Concern	G5	S3B,S3N
	Wood Thrush	Hylocichla mustelina	Breeding Sighting	2	NA	Special Concern	G4	S3B,S4N
	Worm-eating Warbler	Helmitheros vermivorum	Breeding Sighting	2	NA	Special Concern	G5	S3B,S4N
<b><i>Insecta</i></b>								
	Frosted Elfin	Callophrys irus	Breeding/Courtship	3	NA	State Threatened	G3	S2
<b><i>Reptilia</i></b>								
	Eastern Box Turtle	Terrapene carolina carolina	Occupied Habitat	2	NA	Special Concern	G5T5	S3

**Other Animal Species  
In the Immediate Vicinity of the Project Site Based on  
Additional Species Tracked by  
Endangered and Nongame Species Program**

Scientific Name	Common Name	Federal Protection Status	State Protection Status	Grank	Srank
-----------------	-------------	---------------------------	-------------------------	-------	-------

*Invertebrate Animals*

Cicindela dorsalis media	Southeastern Beach Tiger Beetle			G3G4T3T4	S1S2
--------------------------	---------------------------------	--	--	----------	------

Total number of records: 1

**Table 3: Within 1 Mile for Riparian Zone Width Determination  
(6 possible reports)**

<b><u>Report Name</u></b>	<b><u>Included</u></b>	<b><u>Number of Pages</u></b>
1. Rare Plant Species Occurrences for Riparian Zone Width Determination (Flood Hazard Area Control Act Rule Application) - Within One Mile of the Project Site Based on Search of Natural Heritage Database	Yes	1 page(s) included
2. Natural Heritage Priority Sites for Riparian Zone Width Determination - Within One Mile of the Project Site	Yes	See emailed attachments
3. Rare Wildlife Species or Wildlife Habitat for Riparian Zone Width Determination - Within One Mile of the Project Site Based on Search of Landscape Project 3.3 Species Based Patches	Yes	3 page(s) included
4. Vernal Pool Habitat for Riparian Zone Width Determination - Within One Mile of the Project Site Based on Search of Landscape Project 3.3	Yes	1 page(s) included
5. Rare Wildlife Species or Wildlife Habitat for Riparian Zone Width Determination - Within One Mile of the Project Site Based on Search of Landscape Project 3.3 Stream Habitat File	No	0 pages included
6. Other Animal Species for Riparian Zone Width Determination - Within One Mile of the Project Site Based on Additional Species Tracked by Endangered and Nongame Species Program	Yes	1 page(s) included

**Rare Plant Species Occurrences for Riparian Zone Width Determination  
(Flood Hazard Area Control Act Rule Application)  
Within One Mile of the Project Site  
Based on Search of Natural Heritage Database**

Scientific Name	Common Name	Federal Protection Status	State Protection Status	Regional Status	Grank	Srank	Identified	Last Observed
-----------------	-------------	---------------------------	-------------------------	-----------------	-------	-------	------------	---------------

*Vascular Plants*

Helonias bullata	Swamp-pink	LT	E	LP, HL	G3	S3	Y	2010-03-27
------------------	------------	----	---	--------	----	----	---	------------

Total number of records: 1

<p><b>Rare Wildlife Species or Wildlife Habitat for Riparian Zone Width Determination</b>  <b>Within One Mile of the Project Site</b>  <b>Based on Search of Landscape Project 3.3 Species Based Patches</b></p>
--

Class	Common Name	Scientific Name	Feature Type	Rank	Federal Protection Status	State Protection Status	Grank	Srank
<i>Amphibia</i>								
	Cope's Gray Treefrog	Hyla chrysoscelis	Occupied Habitat	4	NA	State Endangered	G5	S1
	Cope's Gray Treefrog	Hyla chrysoscelis	Vernal Pool Breeding	4	NA	State Endangered	G5	S1
	Pine Barrens Treefrog	Hyla andersonii	Vernal Pool Breeding	3	NA	State Threatened	G4	S2
<i>Aves</i>								
	Bald Eagle	Haliaeetus leucocephalus	Foraging	4	NA	State Endangered	G5	S1B,S2N
	Bald Eagle	Haliaeetus leucocephalus	Wintering	3	NA	State Threatened	G5	S1B,S2N
	Barred Owl	Strix varia	Breeding Sighting	3	NA	State Threatened	G5	S2B,S2N
	Black Skimmer	Rynchops niger	Foraging	4	NA	State Endangered	G5	S1B,S1N
	Black-crowned Night-heron	Nycticorax nycticorax	Foraging	3	NA	State Threatened	G5	S2B,S3N
	Brown Thrasher	Toxostoma rufum	Breeding Sighting	2	NA	Special Concern	G5	S3B,S4N
	Cattle Egret	Bubulcus ibis	Foraging	3	NA	State Threatened	G5	S2B,S3N
	Common Tern	Sterna hirundo	Foraging	2	NA	Special Concern	G5	S3B,S4N

<p><b>Rare Wildlife Species or Wildlife Habitat for Riparian Zone Width Determination</b>  <b>Within One Mile of the Project Site</b>  <b>Based on Search of Landscape Project 3.3 Species Based Patches</b></p>
--

Class	Common Name	Scientific Name	Feature Type	Rank	Federal Protection Status	State Protection Status	Grank	Srank
	Cooper's Hawk	Accipiter cooperii	Breeding Sighting	2	NA	Special Concern	G5	S3B,S4N
	Glossy Ibis	Plegadis falcinellus	Foraging	2	NA	Special Concern	G5	S3B,S4N
	Great Blue Heron	Ardea herodias	Foraging	2	NA	Special Concern	G5	S3B,S4N
	Hooded Warbler	Wilsonia citrina	Breeding Sighting	2	NA	Special Concern	G5	S3B,S4N
	Kentucky Warbler	Oporornis formosus	Breeding Sighting	2	NA	Special Concern	G5	S3B,S3N
	Little Blue Heron	Egretta caerulea	Foraging	2	NA	Special Concern	G5	S3B,S3N
	Red-headed Woodpecker	Melanerpes erythrocephalus	Breeding Sighting	3	NA	State Threatened	G5	S2B,S2N
	Red-shouldered Hawk	Buteo lineatus	Breeding Sighting	4	NA	State Endangered	G5	S1B,S3N
	Snowy Egret	Egretta thula	Foraging	2	NA	Special Concern	G5	S3B,S4N
	Tricolored Heron	Egretta tricolor	Foraging	2	NA	Special Concern	G5	S3B,S3N
	Wood Thrush	Hylocichla mustelina	Breeding Sighting	2	NA	Special Concern	G4	S3B,S4N
	Worm-eating Warbler	Helminthos vermivorum	Breeding Sighting	2	NA	Special Concern	G5	S3B,S4N

***Insecta***

<p><b>Rare Wildlife Species or Wildlife Habitat for Riparian Zone Width Determination Within One Mile of the Project Site Based on Search of Landscape Project 3.3 Species Based Patches</b></p>
--

<b>Class</b>	<b>Common Name</b>	<b>Scientific Name</b>	<b>Feature Type</b>	<b>Rank</b>	<b>Federal Protection Status</b>	<b>State Protection Status</b>	<b>Grank</b>	<b>Srank</b>
	Frosted Elfin	Callophrys irus	Breeding/Cour tship	3	NA	State Threatened	G3	S2
<i>Reptilia</i>								
	Eastern Box Turtle	Terrapene carolina carolina	Occupied Habitat	2	NA	Special Concern	G5T5	S3
	Northern Pine Snake	Pituophis melanoleucus melanoleucus	Occupied Habitat	3	NA	State Threatened	G4T4	S2

**Vernal Pool Habitat for Riparian Zone Width Determination  
Within One Mile of the Project Site  
Based on Search of Landscape Project 3.3**

<b>Vernal Pool Habitat Type</b>	<b>Vernal Pool Habitat ID</b>
Vernal habitat area	2643
Potential vernal habitat area	47
Potential vernal habitat area	49
Total number of records:	3



**Other Animal Species for Riparian Zone Width Determination  
 Within One Mile of the Project Site  
 Based on Additional Species Tracked by  
 Endangered and Nongame Species Program**

<b>Scientific Name</b>	<b>Common Name</b>	<b>Federal Protection Status</b>	<b>State Protection Status</b>	<b>Grank</b>	<b>Srank</b>
<i><b>Invertebrate Animals</b></i>					
Callophrys henrici	Henry's Elfin			G5	S3S4
Cicindela dorsalis media	Southeastern Beach Tiger Beetle			G3G4T3T4	S1S2
Total number of records:	2				

Department of Environmental Protection  
**Office of Natural Lands Management**  
 Mail Code 501-04, P.O. Box 420  
 Trenton, New Jersey 08625-0420  
 Tel. (609) 984-1339; Fax. (609) 984-1427



# ***Invoice***

	Date	Invoice #
	8/1/2022	25466

Bill to: The Lomax Consulting Group, LLC P.O. Box 9 - 1435 Route 9 North Cape May Court House, NJ 08210	<p><b><u>Make check payable to:</u></b>  <i>DEP - Office of Natural Lands Management</i></p> <p><b><u>Include this invoice with payment &amp; send to:</u></b>  <i>NJDEP Office of Natural Lands Management</i>  <i>Mail Code 501-04, P.O. Box 420</i>  <i>Trenton, New Jersey 08625-0420</i></p>
--	---

Quantity (hrs.)	Description	Rate (per hr.)	Amount
1	Natural Heritage Database search for locational information of rare species and ecological communities. Project: 22-3907427-25466	\$ 70.00	\$ 70.00
Charles P. Williams Project Name: SJTPO - Regional Trail (Dennis Township Option B)		<b>Total</b>	\$ 70.00



State of New Jersey

MAIL CODE 501-04

DEPARTMENT OF ENVIRONMENTAL PROTECTION

STATE PARKS, FORESTS & HISTORIC SITES

OFFICE OF NATURAL LANDS MANAGEMENT

501 East State Street

P.O. Box 420, Mail Code 501-04

Trenton, NJ 08625-0420

Tel. (609) 984-1339 • Fax (609) 984-0427

PHILIP D. MURPHY

Governor

SHEILA Y. OLIVER

Lt. Governor

SHAWN M. LATOURETTE

Commissioner

August 1, 2022

Charles P. Williams  
The Lomax Consulting Group, LLC  
P.O. Box 9 - 1435 Route 9 North  
Cape May Court House, NJ 08210

Re: SJTPO - Regional Trail (Dennis Township Option B)  
Various road, powerline and railroad ROWs  
Dennis Township, Cape May County

Dear Mr. Williams:

Thank you for your data request regarding rare species information for the above referenced project site.

Searches of the Natural Heritage Database and the Landscape Project (Version 3.3) are based on a representation of the boundaries of your project site in our Geographic Information System (GIS). We make every effort to accurately transfer your project bounds from the map(s) submitted with the Natural Heritage Data Request Form into our GIS. We do not typically verify that your project bounds are accurate, or check them against other sources.

We have checked the Landscape Project habitat mapping and the Biotics Database for occurrences of any rare wildlife species or wildlife habitat on the referenced site. The Natural Heritage Database was searched for occurrences of rare plant species or ecological communities that may be on the project site. Please refer to Table 1 (attached) to determine if any rare plant species, ecological communities, or rare wildlife species or wildlife habitat are documented on site. A detailed report is provided for each category coded as 'Yes' in Table 1.

We have also checked the Landscape Project habitat mapping and Biotics Database for occurrences of rare wildlife species or wildlife habitat in the immediate vicinity (within ¼ mile) of the referenced site. Additionally, the Natural Heritage Database was checked for occurrences of rare plant species or ecological communities within ¼ mile of the site. Please refer to Table 2 (attached) to determine if any rare plant species, ecological communities, or rare wildlife species or wildlife habitat are documented within the immediate vicinity of the site. Detailed reports are provided for all categories coded as 'Yes' in Table 2. These reports may include species that have also been documented on the project site.

We have also checked the Landscape Project habitat mapping and Biotics Database for all occurrences of rare wildlife species or wildlife habitat within one mile of the referenced site. Please refer to Table 3 (attached) to determine if any rare wildlife species or wildlife habitat is documented within one mile of the project site. Detailed reports are provided for each category coded as 'Yes' in Table 3. These reports may include species that have also been documented on the project site.

For requests submitted in order to make a riparian zone width determination as part of a Flood Hazard Area Control Act (FHACA) rule application, we report records for all rare plant species and ecological communities tracked by the Natural Heritage Program that may be on, or in the immediate vicinity of, your project site. A subset of these plant species is also covered by the FHACA rules when the records are located within one mile of the project site. One-mile searches for FHACA plant species will only report precisely located occurrences for those wetland plant species identified under the FHACA regulations as being critically dependent on the watercourse. Please refer to Table 3 (attached) to determine if any precisely located rare wetland plant species covered by the FHACA rules have been documented. Detailed reports are

provided for each category coded as 'Yes' in Table 3. These reports may include species that have also been documented on, or in the immediate vicinity of, the project site.

The Natural Heritage Program reviews its data periodically to identify priority sites for natural diversity in the State. Included as priority sites are some of the State's best habitats for rare and endangered species and ecological communities. Please refer to Tables 1, 2 and 3 (attached) to determine if any priority sites are located on, in the immediate vicinity, or within one mile of the project site.

A list of rare plant species and ecological communities that have been documented from the county (or counties), referenced above, can be downloaded from <https://nj.gov/dep/parksandforests/natural/heritage/database.html>. If suitable habitat is present at the project site, the species in that list have potential to be present.

Status and rank codes used in the tables and lists are defined in EXPLANATION OF CODES USED IN NATURAL HERITAGE REPORTS, which can be downloaded from [https://nj.gov/dep/parksandforests/natural/docs/nhpcodes\\_2010.pdf](https://nj.gov/dep/parksandforests/natural/docs/nhpcodes_2010.pdf).

Beginning May 9, 2017, the Natural Heritage Program reports for wildlife species will utilize data from Landscape Project Version 3.3. If you have questions concerning the wildlife records or wildlife species mentioned in this response, we recommend that you visit the interactive web application at the following URL, <https://njdep.maps.arcgis.com/apps/webappviewer/index.html?id=0e6a44098c524ed99bf739953cb4d4c7>, or contact the Division of Fish and Wildlife, Endangered and Nongame Species Program at (609) 292-9400.

For additional information regarding any Federally listed plant or animal species, please contact the U.S. Fish & Wildlife Service, New Jersey Field Office at <http://www.fws.gov/northeast/njfieldoffice/endangered/consultation.html>.

Information supplied by the Natural Heritage Program summarizes existing data known to the program at the time of the request regarding the biological elements (species and/or ecological communities) or their locations. They should never be regarded as final statements on the elements or areas being considered, nor should they be substituted for on-site surveys required for environmental assessments.

Thank you for consulting the Natural Heritage Program. The attached invoice details the payment due for processing this data request. Feel free to contact us again regarding any future data requests.

Sincerely,



Robert J. Cartica  
Administrator

c: NHP File No. 22-3907427-25466

**Table 1: On Site Data Request Search Results (6 Possible Reports)**

<b><u>Report Name</u></b>	<b><u>Included</u></b>	<b><u>Number of Pages</u></b>
1. Possibly on Project Site Based on Search of Natural Heritage Database: Rare Plant Species and Ecological Communities Currently Recorded in the New Jersey Natural Heritage Database	No	0 pages included
2. Natural Heritage Priority Sites On Site	Yes	See emailed attachments
3. Rare Wildlife Species or Wildlife Habitat on the Project Site Based on Search of Landscape Project 3.3 Species Based Patches	Yes	2 page(s) included
4. Vernal Pool Habitat on the Project Site Based on Search of Landscape Project 3.3	Yes	1 page(s) included
5. Rare Wildlife Species or Wildlife Habitat on the Project Site Based on Search of Landscape Project 3.3 Stream Habitat File	No	0 pages included
6. Other Animal Species On the Project Site Based on Additional Species Tracked by Endangered and Nongame Species Program	Yes	1 page(s) included

**Rare Wildlife Species or Wildlife Habitat on the  
Project Site Based on Search of  
Landscape Project 3.3 Species Based Patches**

<b>Class</b>	<b>Common Name</b>	<b>Scientific Name</b>	<b>Feature Type</b>	<b>Rank</b>	<b>Federal Protection Status</b>	<b>State Protection Status</b>	<b>Grank</b>	<b>Srank</b>
<i>Amphibia</i>								
	Cope's Gray Treefrog	<i>Hyla chrysoscelis</i>	Vernal Pool Breeding	4	NA	State Endangered	G5	S1
	Pine Barrens Treefrog	<i>Hyla andersonii</i>	Vernal Pool Breeding	3	NA	State Threatened	G4	S2
<i>Aves</i>								
	Bald Eagle	<i>Haliaeetus leucocephalus</i>	Foraging	4	NA	State Endangered	G5	S1B,S2N
	Barred Owl	<i>Strix varia</i>	Breeding Sighting	3	NA	State Threatened	G5	S2B,S2N
	Black Skimmer	<i>Rynchops niger</i>	Foraging	4	NA	State Endangered	G5	S1B,S1N
	Black-crowned Night-heron	<i>Nycticorax nycticorax</i>	Foraging	3	NA	State Threatened	G5	S2B,S3N
	Brown Thrasher	<i>Toxostoma rufum</i>	Breeding Sighting	2	NA	Special Concern	G5	S3B,S4N
	Cattle Egret	<i>Bubulcus ibis</i>	Foraging	3	NA	State Threatened	G5	S2B,S3N
	Common Tern	<i>Sterna hirundo</i>	Foraging	2	NA	Special Concern	G5	S3B,S4N
	Cooper's Hawk	<i>Accipiter cooperii</i>	Breeding Sighting	2	NA	Special Concern	G5	S3B,S4N
	Glossy Ibis	<i>Plegadis falcinellus</i>	Foraging	2	NA	Special Concern	G5	S3B,S4N
	Great Blue Heron	<i>Ardea herodias</i>	Foraging	2	NA	Special Concern	G5	S3B,S4N
	Hooded Warbler	<i>Wilsonia citrina</i>	Breeding Sighting	2	NA	Special Concern	G5	S3B,S4N

**Rare Wildlife Species or Wildlife Habitat on the  
Project Site Based on Search of  
Landscape Project 3.3 Species Based Patches**

<b>Class</b>	<b>Common Name</b>	<b>Scientific Name</b>	<b>Feature Type</b>	<b>Rank</b>	<b>Federal Protection Status</b>	<b>State Protection Status</b>	<b>Grank</b>	<b>Srank</b>
	Kentucky Warbler	Oporornis formosus	Breeding Sighting	2	NA	Special Concern	G5	S3B,S3N
	Little Blue Heron	Egretta caerulea	Foraging	2	NA	Special Concern	G5	S3B,S3N
	Red-headed Woodpecker	Melanerpes erythrocephalus	Breeding Sighting	3	NA	State Threatened	G5	S2B,S2N
	Red-shouldered Hawk	Buteo lineatus	Breeding Sighting	4	NA	State Endangered	G5	S1B,S3N
	Snowy Egret	Egretta thula	Foraging	2	NA	Special Concern	G5	S3B,S4N
	Tricolored Heron	Egretta tricolor	Foraging	2	NA	Special Concern	G5	S3B,S3N
	Wood Thrush	Hylocichla mustelina	Breeding Sighting	2	NA	Special Concern	G4	S3B,S4N
	Worm-eating Warbler	Helmitheros vermivorum	Breeding Sighting	2	NA	Special Concern	G5	S3B,S4N
<b><i>Insecta</i></b>								
	Frosted Elfin	Callophrys irus	Breeding/Courtship	3	NA	State Threatened	G3	S2

**Vernal Pool Habitat on the  
Project Site Based on Search of  
Landscape Project 3.3**

<b>Vernal Pool Habitat Type</b>	<b>Vernal Pool Habitat ID</b>
Vernal habitat area	2643
Potential vernal habitat area	49
Total number of records:	2



**Other Animal Species  
On the Project Site Based on  
Additional Species Tracked by  
Endangered and Nongame Species Program**

<b>Scientific Name</b>	<b>Common Name</b>	<b>Federal Protection Status</b>	<b>State Protection Status</b>	<b>Grank</b>	<b>Srank</b>
------------------------	--------------------	----------------------------------	--------------------------------	--------------	--------------

***Invertebrate Animals***

Cicindela dorsalis media	Southeastern Beach Tiger Beetle			G3G4T3T4	S1S2
--------------------------	---------------------------------	--	--	----------	------

Total number of records: 1

**Table 2: Vicinity Data Request Search Results (6 possible reports)**

<b><u>Report Name</u></b>	<b><u>Included</u></b>	<b><u>Number of Pages</u></b>
1. Immediate Vicinity of the Project Site Based on Search of Natural Heritage Database: Rare Plant Species and Ecological Communities Currently Recorded in the New Jersey Natural Heritage Database	Yes	1 page(s) included
2. Natural Heritage Priority Sites within the Immediate Vicinity	Yes	See emailed attachments
3. Rare Wildlife Species or Wildlife Habitat Within the Immediate Vicinity of the Project Site Based on Search of Landscape Project 3.3 Species Based Patches	Yes	2 page(s) included
4. Vernal Pool Habitat In the Immediate Vicinity of Project Site Based on Search of Landscape Project 3.3	Yes	1 page(s) included
5. Rare Wildlife Species or Wildlife Habitat In the Immediate Vicinity of the Project Site Based on Search of Landscape Project 3.3 Stream Habitat File	No	0 pages included
6. Other Animal Species In the Immediate Vicinity of the Project Site Based on Additional Species Tracked by Endangered and Nongame Species Program	Yes	1 page(s) included

**Immediate Vicinity of the Project Site  
Based on Search of Natural Heritage Database  
Rare Plant Species and Ecological Communities Currently Recorded in  
the New Jersey Natural Heritage Database**

Scientific Name	Common Name	Federal Protection Status	State Protection Status	Regional Status	Grank	Srank	Identified	Last Observed	Location
<i>Vascular Plants</i>									
Gentiana autumnalis	Pine Barren Gentian			LP, HL	G3	S3	Y	1934-09-18	1 MI. N. OF SOUTH SEAVILLE, SEA ISLE JUNCTION.
Sclerolepis uniflora	Bog Buttons			LP, HL	G4	S2	Y	1921-09-29	Northwest of Ocean View; Ocean View.
Total number of records:		2							

**Rare Wildlife Species or Wildlife Habitat Within the  
Immediate Vicinity of the Project Site Based on Search of  
Landscape Project 3.3 Species Based Patches**

Class	Common Name	Scientific Name	Feature Type	Rank	Federal Protection Status	State Protection Status	Grank	Srank
<i>Amphibia</i>								
	Cope's Gray Treefrog	Hyla chrysoscelis	Vernal Pool Breeding	4	NA	State Endangered	G5	S1
	Pine Barrens Treefrog	Hyla andersonii	Vernal Pool Breeding	3	NA	State Threatened	G4	S2
<i>Aves</i>								
	Bald Eagle	Haliaeetus leucocephalus	Foraging	4	NA	State Endangered	G5	S1B,S2N
	Bald Eagle	Haliaeetus leucocephalus	Wintering	3	NA	State Threatened	G5	S1B,S2N
	Barred Owl	Strix varia	Breeding Sighting	3	NA	State Threatened	G5	S2B,S2N
	Black Skimmer	Rynchops niger	Foraging	4	NA	State Endangered	G5	S1B,S1N
	Black-crowned Night-heron	Nycticorax nycticorax	Foraging	3	NA	State Threatened	G5	S2B,S3N
	Brown Thrasher	Toxostoma rufum	Breeding Sighting	2	NA	Special Concern	G5	S3B,S4N
	Cattle Egret	Bubulcus ibis	Foraging	3	NA	State Threatened	G5	S2B,S3N
	Common Tern	Sterna hirundo	Foraging	2	NA	Special Concern	G5	S3B,S4N
	Cooper's Hawk	Accipiter cooperii	Breeding Sighting	2	NA	Special Concern	G5	S3B,S4N
	Glossy Ibis	Plegadis falcinellus	Foraging	2	NA	Special Concern	G5	S3B,S4N
	Great Blue Heron	Ardea herodias	Foraging	2	NA	Special Concern	G5	S3B,S4N
	Hooded Warbler	Wilsonia citrina	Breeding Sighting	2	NA	Special Concern	G5	S3B,S4N
	Kentucky Warbler	Oporornis formosus	Breeding Sighting	2	NA	Special Concern	G5	S3B,S3N

**Rare Wildlife Species or Wildlife Habitat Within the  
Immediate Vicinity of the Project Site Based on Search of  
Landscape Project 3.3 Species Based Patches**

<b>Class</b>	<b>Common Name</b>	<b>Scientific Name</b>	<b>Feature Type</b>	<b>Rank</b>	<b>Federal Protection Status</b>	<b>State Protection Status</b>	<b>Grank</b>	<b>Srank</b>
	Little Blue Heron	Egretta caerulea	Foraging	2	NA	Special Concern	G5	S3B,S3N
	Red-headed Woodpecker	Melanerpes erythrocephalus	Breeding Sighting	3	NA	State Threatened	G5	S2B,S2N
	Red-shouldered Hawk	Buteo lineatus	Breeding Sighting	4	NA	State Endangered	G5	S1B,S3N
	Snowy Egret	Egretta thula	Foraging	2	NA	Special Concern	G5	S3B,S4N
	Tricolored Heron	Egretta tricolor	Foraging	2	NA	Special Concern	G5	S3B,S3N
	Wood Thrush	Hylocichla mustelina	Breeding Sighting	2	NA	Special Concern	G4	S3B,S4N
	Worm-eating Warbler	Helmitheros vermivorum	Breeding Sighting	2	NA	Special Concern	G5	S3B,S4N
<b><i>Insecta</i></b>								
	Frosted Elfin	Callophrys irus	Breeding/Courtship	3	NA	State Threatened	G3	S2
<b><i>Reptilia</i></b>								
	Eastern Box Turtle	Terrapene carolina carolina	Occupied Habitat	2	NA	Special Concern	G5T5	S3

**Vernal Pool Habitat  
In the Immediate Vicinity of  
Project Site Based on Search of  
Landscape Project 3.3**

**Vernal Pool Habitat Type**

**Vernal Pool Habitat ID**

---

Vernal habitat area	2643
Potential vernal habitat area	49
Total number of records:	2

**Other Animal Species  
In the Immediate Vicinity of the Project Site Based on  
Additional Species Tracked by  
Endangered and Nongame Species Program**

Scientific Name	Common Name	Federal Protection Status	State Protection Status	Grank	Srank
-----------------	-------------	---------------------------	-------------------------	-------	-------

*Invertebrate Animals*

Cicindela dorsalis media	Southeastern Beach Tiger Beetle			G3G4T3T4	S1S2
--------------------------	---------------------------------	--	--	----------	------

Total number of records: 1

**Table 3: Within 1 Mile for Riparian Zone Width Determination  
(6 possible reports)**

<b><u>Report Name</u></b>	<b><u>Included</u></b>	<b><u>Number of Pages</u></b>
1. Rare Plant Species Occurrences for Riparian Zone Width Determination (Flood Hazard Area Control Act Rule Application) - Within One Mile of the Project Site Based on Search of Natural Heritage Database	Yes	1 page(s) included
2. Natural Heritage Priority Sites for Riparian Zone Width Determination - Within One Mile of the Project Site	Yes	See emailed attachments
3. Rare Wildlife Species or Wildlife Habitat for Riparian Zone Width Determination - Within One Mile of the Project Site Based on Search of Landscape Project 3.3 Species Based Patches	Yes	3 page(s) included
4. Vernal Pool Habitat for Riparian Zone Width Determination - Within One Mile of the Project Site Based on Search of Landscape Project 3.3	Yes	1 page(s) included
5. Rare Wildlife Species or Wildlife Habitat for Riparian Zone Width Determination - Within One Mile of the Project Site Based on Search of Landscape Project 3.3 Stream Habitat File	No	0 pages included
6. Other Animal Species for Riparian Zone Width Determination - Within One Mile of the Project Site Based on Additional Species Tracked by Endangered and Nongame Species Program	Yes	1 page(s) included



**Rare Plant Species Occurrences for Riparian Zone Width Determination  
(Flood Hazard Area Control Act Rule Application)  
Within One Mile of the Project Site  
Based on Search of Natural Heritage Database**

Scientific Name	Common Name	Federal Protection Status	State Protection Status	Regional Status	Grank	Srank	Identified	Last Observed
-----------------	-------------	---------------------------	-------------------------	-----------------	-------	-------	------------	---------------

*Vascular Plants*

Helonias bullata	Swamp-pink	LT	E	LP, HL	G3	S3	Y	2010-03-27
Helonias bullata	Swamp-pink	LT	E	LP, HL	G3	S3	Y	2001-10-18

Total number of records: 2

<p><b>Rare Wildlife Species or Wildlife Habitat for Riparian Zone Width Determination</b>  <b>Within One Mile of the Project Site</b>  <b>Based on Search of Landscape Project 3.3 Species Based Patches</b></p>
--

Class	Common Name	Scientific Name	Feature Type	Rank	Federal Protection Status	State Protection Status	Grank	Strank
<i>Amphibia</i>								
	Cope's Gray Treefrog	Hyla chrysoscelis	Occupied Habitat	4	NA	State Endangered	G5	S1
	Cope's Gray Treefrog	Hyla chrysoscelis	Vernal Pool Breeding	4	NA	State Endangered	G5	S1
	Pine Barrens Treefrog	Hyla andersonii	Vernal Pool Breeding	3	NA	State Threatened	G4	S2
<i>Aves</i>								
	Bald Eagle	Haliaeetus leucocephalus	Foraging	4	NA	State Endangered	G5	S1B,S2N
	Bald Eagle	Haliaeetus leucocephalus	Wintering	3	NA	State Threatened	G5	S1B,S2N
	Barred Owl	Strix varia	Breeding Sighting	3	NA	State Threatened	G5	S2B,S2N
	Black Skimmer	Rynchops niger	Foraging	4	NA	State Endangered	G5	S1B,S1N
	Black-crowned Night-heron	Nycticorax nycticorax	Foraging	3	NA	State Threatened	G5	S2B,S3N
	Brown Thrasher	Toxostoma rufum	Breeding Sighting	2	NA	Special Concern	G5	S3B,S4N
	Cattle Egret	Bubulcus ibis	Foraging	3	NA	State Threatened	G5	S2B,S3N
	Common Tern	Sterna hirundo	Foraging	2	NA	Special Concern	G5	S3B,S4N

<p><b>Rare Wildlife Species or Wildlife Habitat for Riparian Zone Width Determination</b>  <b>Within One Mile of the Project Site</b>  <b>Based on Search of Landscape Project 3.3 Species Based Patches</b></p>
--

Class	Common Name	Scientific Name	Feature Type	Rank	Federal Protection Status	State Protection Status	Grank	Srank
	Cooper's Hawk	Accipiter cooperii	Breeding Sighting	2	NA	Special Concern	G5	S3B,S4N
	Glossy Ibis	Plegadis falcinellus	Foraging	2	NA	Special Concern	G5	S3B,S4N
	Great Blue Heron	Ardea herodias	Foraging	2	NA	Special Concern	G5	S3B,S4N
	Gull-billed Tern	Gelochelidon nilotica	Foraging	2	NA	Special Concern	G5	S3B,S3N
	Hooded Warbler	Wilsonia citrina	Breeding Sighting	2	NA	Special Concern	G5	S3B,S4N
	Kentucky Warbler	Oporornis formosus	Breeding Sighting	2	NA	Special Concern	G5	S3B,S3N
	Least Tern	Sternula antillarum	Foraging	4	NA	State Endangered	G4	S1B,S1N
	Little Blue Heron	Egretta caerulea	Foraging	2	NA	Special Concern	G5	S3B,S3N
	Osprey	Pandion haliaetus	Foraging	3	NA	State Threatened	G5	S2B,S4N
	Red-headed Woodpecker	Melanerpes erythrocephalus	Breeding Sighting	3	NA	State Threatened	G5	S2B,S2N
	Red-shouldered Hawk	Buteo lineatus	Breeding Sighting	4	NA	State Endangered	G5	S1B,S3N
	Snowy Egret	Egretta thula	Foraging	2	NA	Special Concern	G5	S3B,S4N
	Tricolored Heron	Egretta tricolor	Foraging	2	NA	Special Concern	G5	S3B,S3N
	Wood Thrush	Hylocichla mustelina	Breeding Sighting	2	NA	Special Concern	G4	S3B,S4N

<p><b>Rare Wildlife Species or Wildlife Habitat for Riparian Zone Width Determination Within One Mile of the Project Site Based on Search of Landscape Project 3.3 Species Based Patches</b></p>
--

<b>Class</b>	<b>Common Name</b>	<b>Scientific Name</b>	<b>Feature Type</b>	<b>Rank</b>	<b>Federal Protection Status</b>	<b>State Protection Status</b>	<b>Grank</b>	<b>Srank</b>
	Worm-eating Warbler	Helmintheros vermivorum	Breeding Sighting	2	NA	Special Concern	G5	S3B,S4N
<i><b>Insecta</b></i>								
	Frosted Elfin	Callophrys irus	Breeding/Cour tship	3	NA	State Threatened	G3	S2
<i><b>Reptilia</b></i>								
	Eastern Box Turtle	Terrapene carolina carolina	Occupied Habitat	2	NA	Special Concern	G5T5	S3

**Vernal Pool Habitat for Riparian Zone Width Determination  
Within One Mile of the Project Site  
Based on Search of Landscape Project 3.3**

<b>Vernal Pool Habitat Type</b>	<b>Vernal Pool Habitat ID</b>
Vernal habitat area	2641
Vernal habitat area	2642
Vernal habitat area	2643
Potential vernal habitat area	43
Potential vernal habitat area	44
Potential vernal habitat area	45
Potential vernal habitat area	46
Potential vernal habitat area	47
Potential vernal habitat area	48
Potential vernal habitat area	49
Total number of records:	10

**Other Animal Species for Riparian Zone Width Determination  
 Within One Mile of the Project Site  
 Based on Additional Species Tracked by  
 Endangered and Nongame Species Program**

<b>Scientific Name</b>	<b>Common Name</b>	<b>Federal Protection Status</b>	<b>State Protection Status</b>	<b>Grank</b>	<b>Srank</b>
<i><b>Invertebrate Animals</b></i>					
Callophrys henrici	Henry's Elfin			G5	S3S4
Cicindela dorsalis media	Southeastern Beach Tiger Beetle			G3G4T3T4	S1S2
Total number of records:	2				

Department of Environmental Protection  
**Office of Natural Lands Management**  
 Mail Code 501-04, P.O. Box 420  
 Trenton, New Jersey 08625-0420  
 Tel. (609) 984-1339; Fax. (609) 984-1427



# ***Invoice***

	Date	Invoice #
	8/1/2022	25464

Bill to: The Lomax Consulting Group, LLC P.O. Box 9 - 1435 Route 9 North Cape May Court House, NJ 08210	<b><u>Make check payable to:</u></b> <i>DEP - Office of Natural Lands Management</i>  <b><u>Include this invoice with payment &amp; send to:</u></b> <i>NJDEP Office of Natural Lands Management</i> <i>Mail Code 501-04, P.O. Box 420</i> <i>Trenton, New Jersey 08625-0420</i>
--	--

Quantity (hrs.)	Description	Rate (per hr.)	Amount
1	Natural Heritage Database search for locational information of rare species and ecological communities. Project: 22-3907426-25464	\$ 70.00	\$ 70.00
Charles P. Williams Project Name: SJTPO - Regional Trail (Upper Township)		<b>Total</b>	\$ 70.00



State of New Jersey

MAIL CODE 501-04

DEPARTMENT OF ENVIRONMENTAL PROTECTION

STATE PARKS, FORESTS & HISTORIC SITES

OFFICE OF NATURAL LANDS MANAGEMENT

501 East State Street

P.O. Box 420, Mail Code 501-04

Trenton, NJ 08625-0420

Tel. (609) 984-1339 • Fax (609) 984-0427

PHILIP D. MURPHY

Governor

SHEILA Y. OLIVER

Lt. Governor

SHAWN M. LATOURETTE

Commissioner

August 1, 2022

Charles P. Williams  
The Lomax Consulting Group, LLC  
P.O. Box 9 - 1435 Route 9 North  
Cape May Court House, NJ 08210

Re: SJTPO - Regional Trail (Upper Township)  
Various road, powerline and railroad ROWs  
Upper Township, Cape May County

Dear Mr. Williams:

Thank you for your data request regarding rare species information for the above referenced project site.

Searches of the Natural Heritage Database and the Landscape Project (Version 3.3) are based on a representation of the boundaries of your project site in our Geographic Information System (GIS). We make every effort to accurately transfer your project bounds from the map(s) submitted with the Natural Heritage Data Request Form into our GIS. We do not typically verify that your project bounds are accurate, or check them against other sources.

We have checked the Landscape Project habitat mapping and the Biotics Database for occurrences of any rare wildlife species or wildlife habitat on the referenced site. The Natural Heritage Database was searched for occurrences of rare plant species or ecological communities that may be on the project site. Please refer to Table 1 (attached) to determine if any rare plant species, ecological communities, or rare wildlife species or wildlife habitat are documented on site. A detailed report is provided for each category coded as 'Yes' in Table 1.

We have also checked the Landscape Project habitat mapping and Biotics Database for occurrences of rare wildlife species or wildlife habitat in the immediate vicinity (within ¼ mile) of the referenced site. Additionally, the Natural Heritage Database was checked for occurrences of rare plant species or ecological communities within ¼ mile of the site. Please refer to Table 2 (attached) to determine if any rare plant species, ecological communities, or rare wildlife species or wildlife habitat are documented within the immediate vicinity of the site. Detailed reports are provided for all categories coded as 'Yes' in Table 2. These reports may include species that have also been documented on the project site.

We have also checked the Landscape Project habitat mapping and Biotics Database for all occurrences of rare wildlife species or wildlife habitat within one mile of the referenced site. Please refer to Table 3 (attached) to determine if any rare wildlife species or wildlife habitat is documented within one mile of the project site. Detailed reports are provided for each category coded as 'Yes' in Table 3. These reports may include species that have also been documented on the project site.

For requests submitted in order to make a riparian zone width determination as part of a Flood Hazard Area Control Act (FHACA) rule application, we report records for all rare plant species and ecological communities tracked by the Natural Heritage Program that may be on, or in the immediate vicinity of, your project site. A subset of these plant species is also covered by the FHACA rules when the records are located within one mile of the project site. One-mile searches for FHACA plant species will only report precisely located occurrences for those wetland plant species identified under the FHACA regulations as being critically dependent on the watercourse. Please refer to Table 3 (attached) to determine if any precisely located rare wetland plant species covered by the FHACA rules have been documented. Detailed reports are



provided for each category coded as 'Yes' in Table 3. These reports may include species that have also been documented on, or in the immediate vicinity of, the project site.

The Natural Heritage Program reviews its data periodically to identify priority sites for natural diversity in the State. Included as priority sites are some of the State's best habitats for rare and endangered species and ecological communities. Please refer to Tables 1, 2 and 3 (attached) to determine if any priority sites are located on, in the immediate vicinity, or within one mile of the project site.

A list of rare plant species and ecological communities that have been documented from the county (or counties), referenced above, can be downloaded from <https://nj.gov/dep/parksandforests/natural/heritage/database.html>. If suitable habitat is present at the project site, the species in that list have potential to be present.

Status and rank codes used in the tables and lists are defined in EXPLANATION OF CODES USED IN NATURAL HERITAGE REPORTS, which can be downloaded from [https://nj.gov/dep/parksandforests/natural/docs/nhpcodes\\_2010.pdf](https://nj.gov/dep/parksandforests/natural/docs/nhpcodes_2010.pdf).

Beginning May 9, 2017, the Natural Heritage Program reports for wildlife species will utilize data from Landscape Project Version 3.3. If you have questions concerning the wildlife records or wildlife species mentioned in this response, we recommend that you visit the interactive web application at the following URL, <https://njdep.maps.arcgis.com/apps/webappviewer/index.html?id=0e6a44098c524ed99bf739953cb4d4c7>, or contact the Division of Fish and Wildlife, Endangered and Nongame Species Program at (609) 292-9400.

For additional information regarding any Federally listed plant or animal species, please contact the U.S. Fish & Wildlife Service, New Jersey Field Office at <http://www.fws.gov/northeast/njfieldoffice/endangered/consultation.html>.

Information supplied by the Natural Heritage Program summarizes existing data known to the program at the time of the request regarding the biological elements (species and/or ecological communities) or their locations. They should never be regarded as final statements on the elements or areas being considered, nor should they be substituted for on-site surveys required for environmental assessments.

Thank you for consulting the Natural Heritage Program. The attached invoice details the payment due for processing this data request. Feel free to contact us again regarding any future data requests.

Sincerely,



Robert J. Cartica  
Administrator

c: NHP File No. 22-3907426-25464

**Table 1: On Site Data Request Search Results (6 Possible Reports)**

<b><u>Report Name</u></b>	<b><u>Included</u></b>	<b><u>Number of Pages</u></b>
1. Possibly on Project Site Based on Search of Natural Heritage Database: Rare Plant Species and Ecological Communities Currently Recorded in the New Jersey Natural Heritage Database	No	0 pages included
2. Natural Heritage Priority Sites On Site	No	0 pages included
3. Rare Wildlife Species or Wildlife Habitat on the Project Site Based on Search of Landscape Project 3.3 Species Based Patches	Yes	2 page(s) included
4. Vernal Pool Habitat on the Project Site Based on Search of Landscape Project 3.3	Yes	1 page(s) included
5. Rare Wildlife Species or Wildlife Habitat on the Project Site Based on Search of Landscape Project 3.3 Stream Habitat File	No	0 pages included
6. Other Animal Species On the Project Site Based on Additional Species Tracked by Endangered and Nongame Species Program	Yes	1 page(s) included

**Rare Wildlife Species or Wildlife Habitat on the  
Project Site Based on Search of  
Landscape Project 3.3 Species Based Patches**

<b>Class</b>	<b>Common Name</b>	<b>Scientific Name</b>	<b>Feature Type</b>	<b>Rank</b>	<b>Federal Protection Status</b>	<b>State Protection Status</b>	<b>Grank</b>	<b>Srank</b>
<i>Amphibia</i>								
	Cope's Gray Treefrog	<i>Hyla chrysoscelis</i>	Vernal Pool Breeding	4	NA	State Endangered	G5	S1
	Fowler's Toad	<i>Anaxyrus fowleri</i>	Occupied Habitat	2	NA	Special Concern	G5	S3
<i>Aves</i>								
	Bald Eagle	<i>Haliaeetus leucocephalus</i>	Foraging	4	NA	State Endangered	G5	S1B,S2N
	Bald Eagle	<i>Haliaeetus leucocephalus</i>	Nest	4	NA	State Endangered	G5	S1B,S2N
	Bald Eagle	<i>Haliaeetus leucocephalus</i>	Wintering	3	NA	State Threatened	G5	S1B,S2N
	Barred Owl	<i>Strix varia</i>	Breeding Sighting	3	NA	State Threatened	G5	S2B,S2N
	Black Skimmer	<i>Rynchops niger</i>	Foraging	4	NA	State Endangered	G5	S1B,S1N
	Black-billed Cuckoo	<i>Coccyzus erythrophthalmus</i>	Breeding Sighting	2	NA	Special Concern	G5	S3B,S4N
	Black-crowned Night-heron	<i>Nycticorax nycticorax</i>	Foraging	3	NA	State Threatened	G5	S2B,S3N
	Brown Thrasher	<i>Toxostoma rufum</i>	Breeding Sighting	2	NA	Special Concern	G5	S3B,S4N
	Cattle Egret	<i>Bubulcus ibis</i>	Foraging	3	NA	State Threatened	G5	S2B,S3N

**Rare Wildlife Species or Wildlife Habitat on the  
Project Site Based on Search of  
Landscape Project 3.3 Species Based Patches**

<b>Class</b>	<b>Common Name</b>	<b>Scientific Name</b>	<b>Feature Type</b>	<b>Rank</b>	<b>Federal Protection Status</b>	<b>State Protection Status</b>	<b>Grank</b>	<b>Srank</b>
	Common Tern	Sterna hirundo	Foraging	2	NA	Special Concern	G5	S3B,S4N
	Glossy Ibis	Plegadis falcinellus	Foraging	2	NA	Special Concern	G5	S3B,S4N
	Great Blue Heron	Ardea herodias	Foraging	2	NA	Special Concern	G5	S3B,S4N
	Gull-billed Tern	Gelochelidon nilotica	Foraging	2	NA	Special Concern	G5	S3B,S3N
	Hooded Warbler	Wilsonia citrina	Breeding Sighting	2	NA	Special Concern	G5	S3B,S4N
	Least Tern	Sternula antillarum	Foraging	4	NA	State Endangered	G4	S1B,S1N
	Little Blue Heron	Egretta caerulea	Foraging	2	NA	Special Concern	G5	S3B,S3N
	Northern Harrier	Circus cyaneus	Breeding Sighting	4	NA	State Endangered	G5	S1B,S3N
	Osprey	Pandion haliaetus	Nest	3	NA	State Threatened	G5	S2B,S4N
	Peregrine Falcon	Falco peregrinus	Nest	4	NA	State Endangered	G4	S1B,S3N
	Snowy Egret	Egretta thula	Foraging	2	NA	Special Concern	G5	S3B,S4N
	Tricolored Heron	Egretta tricolor	Foraging	2	NA	Special Concern	G5	S3B,S3N
	Wood Thrush	Hylocichla mustelina	Breeding Sighting	2	NA	Special Concern	G4	S3B,S4N
<b>Reptilia</b>								
	Eastern Box Turtle	Terrapene carolina carolina	Occupied Habitat	2	NA	Special Concern	G5T5	S3

**Vernal Pool Habitat on the  
Project Site Based on Search of  
Landscape Project 3.3**

<b>Vernal Pool Habitat Type</b>	<b>Vernal Pool Habitat ID</b>
Vernal habitat area	2643
Vernal habitat area	2649
Potential vernal habitat area	67
Potential vernal habitat area	76
Potential vernal habitat area	77
Potential vernal habitat area	94
Total number of records:	6

**Other Animal Species  
On the Project Site Based on  
Additional Species Tracked by  
Endangered and Nongame Species Program**

<b>Scientific Name</b>	<b>Common Name</b>	<b>Federal Protection Status</b>	<b>State Protection Status</b>	<b>Grank</b>	<b>Srank</b>
<i>Invertebrate Animals</i>					
Callophrys henrici	Henry's Elfin			G5	S3S4
Cicindela dorsalis media	Southeastern Beach Tiger Beetle			G3G4T3T4	S1S2
Total number of records:	2				

**Table 2: Vicinity Data Request Search Results (6 possible reports)**

<b><u>Report Name</u></b>	<b><u>Included</u></b>	<b><u>Number of Pages</u></b>
1. Immediate Vicinity of the Project Site Based on Search of Natural Heritage Database: Rare Plant Species and Ecological Communities Currently Recorded in the New Jersey Natural Heritage Database	Yes	1 page(s) included
2. Natural Heritage Priority Sites within the Immediate Vicinity	No	0 pages included
3. Rare Wildlife Species or Wildlife Habitat Within the Immediate Vicinity of the Project Site Based on Search of Landscape Project 3.3 Species Based Patches	Yes	2 page(s) included
4. Vernal Pool Habitat In the Immediate Vicinity of Project Site Based on Search of Landscape Project 3.3	Yes	1 page(s) included
5. Rare Wildlife Species or Wildlife Habitat In the Immediate Vicinity of the Project Site Based on Search of Landscape Project 3.3 Stream Habitat File	No	0 pages included
6. Other Animal Species In the Immediate Vicinity of the Project Site Based on Additional Species Tracked by Endangered and Nongame Species Program	Yes	1 page(s) included

**Immediate Vicinity of the Project Site  
Based on Search of Natural Heritage Database  
Rare Plant Species and Ecological Communities Currently Recorded in  
the New Jersey Natural Heritage Database**

Scientific Name	Common Name	Federal Protection Status	State Protection Status	Regional Status	Grank	Srank	Identified	Last Observed	Location
-----------------	-------------	---------------------------	-------------------------	-----------------	-------	-------	------------	---------------	----------

***Vascular Plants***

Asclepias variegata	White Milkweed			HL	G5	S1	Y	1909-06-13	North of railroad, west of Palermo.
---------------------	----------------	--	--	----	----	----	---	------------	-------------------------------------

Total number of records: 1



**Rare Wildlife Species or Wildlife Habitat Within the  
Immediate Vicinity of the Project Site Based on Search of  
Landscape Project 3.3 Species Based Patches**

Class	Common Name	Scientific Name	Feature Type	Rank	Federal Protection Status	State Protection Status	Grank	Strank
<i>Amphibia</i>								
	Cope's Gray Treefrog	Hyla chrysoscelis	Vernal Pool Breeding	4	NA	State Endangered	G5	S1
	Fowler's Toad	Anaxyrus fowleri	Occupied Habitat	2	NA	Special Concern	G5	S3
<i>Aves</i>								
	Bald Eagle	Haliaeetus leucocephalus	Foraging	4	NA	State Endangered	G5	S1B,S2N
	Bald Eagle	Haliaeetus leucocephalus	Nest	4	NA	State Endangered	G5	S1B,S2N
	Bald Eagle	Haliaeetus leucocephalus	Wintering	3	NA	State Threatened	G5	S1B,S2N
	Barred Owl	Strix varia	Breeding Sighting	3	NA	State Threatened	G5	S2B,S2N
	Black Skimmer	Rynchops niger	Foraging	4	NA	State Endangered	G5	S1B,S1N
	Black-billed Cuckoo	Coccyzus erythrophthalmus	Breeding Sighting	2	NA	Special Concern	G5	S3B,S4N
	Black-crowned Night-heron	Nycticorax nycticorax	Foraging	3	NA	State Threatened	G5	S2B,S3N
	Brown Thrasher	Toxostoma rufum	Breeding Sighting	2	NA	Special Concern	G5	S3B,S4N
	Cattle Egret	Bubulcus ibis	Foraging	3	NA	State Threatened	G5	S2B,S3N
	Common Tern	Sterna hirundo	Foraging	2	NA	Special Concern	G5	S3B,S4N
	Glossy Ibis	Plegadis falcinellus	Foraging	2	NA	Special Concern	G5	S3B,S4N

**Rare Wildlife Species or Wildlife Habitat Within the  
Immediate Vicinity of the Project Site Based on Search of  
Landscape Project 3.3 Species Based Patches**

<b>Class</b>	<b>Common Name</b>	<b>Scientific Name</b>	<b>Feature Type</b>	<b>Rank</b>	<b>Federal Protection Status</b>	<b>State Protection Status</b>	<b>Grank</b>	<b>Srank</b>
	Great Blue Heron	Ardea herodias	Foraging	2	NA	Special Concern	G5	S3B,S4N
	Gull-billed Tern	Gelochelidon nilotica	Foraging	2	NA	Special Concern	G5	S3B,S3N
	Hooded Warbler	Wilsonia citrina	Breeding Sighting	2	NA	Special Concern	G5	S3B,S4N
	Least Tern	Sternula antillarum	Foraging	4	NA	State Endangered	G4	S1B,S1N
	Little Blue Heron	Egretta caerulea	Foraging	2	NA	Special Concern	G5	S3B,S3N
	Northern Harrier	Circus cyaneus	Breeding Sighting	4	NA	State Endangered	G5	S1B,S3N
	Osprey	Pandion haliaetus	Foraging	3	NA	State Threatened	G5	S2B,S4N
	Osprey	Pandion haliaetus	Nest	3	NA	State Threatened	G5	S2B,S4N
	Peregrine Falcon	Falco peregrinus	Nest	4	NA	State Endangered	G4	S1B,S3N
	Snowy Egret	Egretta thula	Foraging	2	NA	Special Concern	G5	S3B,S4N
	Tricolored Heron	Egretta tricolor	Foraging	2	NA	Special Concern	G5	S3B,S3N
	Wood Thrush	Hylocichla mustelina	Breeding Sighting	2	NA	Special Concern	G4	S3B,S4N
	Yellow-crowned Night-heron	Nyctanassa violacea	Foraging	3	NA	State Threatened	G5	S2B,S2N
<b>Reptilia</b>								
	Eastern Box Turtle	Terrapene carolina carolina	Occupied Habitat	2	NA	Special Concern	G5T5	S3
	Spotted Turtle	Clemmys guttata	Occupied Habitat	2	NA	Special Concern	G5	S3

**Vernal Pool Habitat  
In the Immediate Vicinity of  
Project Site Based on Search of  
Landscape Project 3.3**

<b>Vernal Pool Habitat Type</b>	<b>Vernal Pool Habitat ID</b>
Vernal habitat area	2643
Vernal habitat area	2649
Potential vernal habitat area	67
Potential vernal habitat area	76
Potential vernal habitat area	77
Potential vernal habitat area	83
Potential vernal habitat area	94
Total number of records:	7

**Other Animal Species  
In the Immediate Vicinity of the Project Site Based on  
Additional Species Tracked by  
Endangered and Nongame Species Program**

<b>Scientific Name</b>	<b>Common Name</b>	<b>Federal Protection Status</b>	<b>State Protection Status</b>	<b>Grank</b>	<b>Srank</b>
<i>Invertebrate Animals</i>					
Callophrys henrici	Henry's Elfin			G5	S3S4
Cicindela dorsalis media	Southeastern Beach Tiger Beetle			G3G4T3T4	S1S2
Total number of records:	2				

**Table 3: Within 1 Mile for Riparian Zone Width Determination  
(6 possible reports)**

<b><u>Report Name</u></b>	<b><u>Included</u></b>	<b><u>Number of Pages</u></b>
1. Rare Plant Species Occurrences for Riparian Zone Width Determination (Flood Hazard Area Control Act Rule Application) - Within One Mile of the Project Site Based on Search of Natural Heritage Database	Yes	1 page(s) included
2. Natural Heritage Priority Sites for Riparian Zone Width Determination - Within One Mile of the Project Site	Yes	See emailed attachments
3. Rare Wildlife Species or Wildlife Habitat for Riparian Zone Width Determination - Within One Mile of the Project Site Based on Search of Landscape Project 3.3 Species Based Patches	Yes	4 page(s) included
4. Vernal Pool Habitat for Riparian Zone Width Determination - Within One Mile of the Project Site Based on Search of Landscape Project 3.3	Yes	1 page(s) included
5. Rare Wildlife Species or Wildlife Habitat for Riparian Zone Width Determination - Within One Mile of the Project Site Based on Search of Landscape Project 3.3 Stream Habitat File	No	0 pages included
6. Other Animal Species for Riparian Zone Width Determination - Within One Mile of the Project Site Based on Additional Species Tracked by Endangered and Nongame Species Program	Yes	1 page(s) included

**Rare Plant Species Occurrences for Riparian Zone Width Determination  
(Flood Hazard Area Control Act Rule Application)  
Within One Mile of the Project Site  
Based on Search of Natural Heritage Database**

Scientific Name	Common Name	Federal Protection Status	State Protection Status	Regional Status	Grank	Srank	Identified	Last Observed
-----------------	-------------	---------------------------	-------------------------	-----------------	-------	-------	------------	---------------

*Vascular Plants*

Helonias bullata	Swamp-pink	LT	E	LP, HL	G3	S3	Y	1998-05-18
------------------	------------	----	---	--------	----	----	---	------------

Total number of records: 1

<p><b>Rare Wildlife Species or Wildlife Habitat for Riparian Zone Width Determination</b>  <b>Within One Mile of the Project Site</b>  <b>Based on Search of Landscape Project 3.3 Species Based Patches</b></p>
--

Class	Common Name	Scientific Name	Feature Type	Rank	Federal Protection Status	State Protection Status	Grank	Srank
<i>Amphibia</i>								
	Cope's Gray Treefrog	Hyla chrysoscelis	Occupied Habitat	4	NA	State Endangered	G5	S1
	Cope's Gray Treefrog	Hyla chrysoscelis	Vernal Pool Breeding	4	NA	State Endangered	G5	S1
	Fowler's Toad	Anaxyrus fowleri	Occupied Habitat	2	NA	Special Concern	G5	S3
	Pine Barrens Treefrog	Hyla andersonii	Vernal Pool Breeding	3	NA	State Threatened	G4	S2
<i>Aves</i>								
	Bald Eagle	Haliaeetus leucocephalus	Foraging	4	NA	State Endangered	G5	S1B,S2N
	Bald Eagle	Haliaeetus leucocephalus	Nest	4	NA	State Endangered	G5	S1B,S2N
	Bald Eagle	Haliaeetus leucocephalus	Wintering	3	NA	State Threatened	G5	S1B,S2N
	Barred Owl	Strix varia	Breeding Sighting	3	NA	State Threatened	G5	S2B,S2N
	Barred Owl	Strix varia	Non-breeding Sighting	3	NA	State Threatened	G5	S2B,S2N

<p><b>Rare Wildlife Species or Wildlife Habitat for Riparian Zone Width Determination</b>  <b>Within One Mile of the Project Site</b>  <b>Based on Search of Landscape Project 3.3 Species Based Patches</b></p>
--

Class	Common Name	Scientific Name	Feature Type	Rank	Federal Protection Status	State Protection Status	Grank	Srank
	Black Rail	<i>Laterallus jamaicensis</i>	Breeding Sighting-Confirmed	4	NA	State Endangered	G3G4	S1B,S2N
	Black Skimmer	<i>Rynchops niger</i>	Foraging	4	NA	State Endangered	G5	S1B,S1N
	Black-billed Cuckoo	<i>Coccyzus erythrophthalmus</i>	Breeding Sighting	2	NA	Special Concern	G5	S3B,S4N
	Black-crowned Night-heron	<i>Nycticorax nycticorax</i>	Foraging	3	NA	State Threatened	G5	S2B,S3N
	Brown Thrasher	<i>Toxostoma rufum</i>	Breeding Sighting	2	NA	Special Concern	G5	S3B,S4N
	Cattle Egret	<i>Bubulcus ibis</i>	Foraging	3	NA	State Threatened	G5	S2B,S3N
	Common Tern	<i>Sterna hirundo</i>	Foraging	2	NA	Special Concern	G5	S3B,S4N
	Cooper's Hawk	<i>Accipiter cooperii</i>	Breeding Sighting	2	NA	Special Concern	G5	S3B,S4N
	Glossy Ibis	<i>Plegadis falcinellus</i>	Foraging	2	NA	Special Concern	G5	S3B,S4N
	Great Blue Heron	<i>Ardea herodias</i>	Foraging	2	NA	Special Concern	G5	S3B,S4N
	Gull-billed Tern	<i>Gelochelidon nilotica</i>	Foraging	2	NA	Special Concern	G5	S3B,S3N
	Gull-billed Tern	<i>Gelochelidon nilotica</i>	Nesting Colony	2	NA	Special Concern	G5	S3B,S3N
	Hooded Warbler	<i>Wilsonia citrina</i>	Breeding Sighting	2	NA	Special Concern	G5	S3B,S4N



<p><b>Rare Wildlife Species or Wildlife Habitat for Riparian Zone Width Determination Within One Mile of the Project Site Based on Search of Landscape Project 3.3 Species Based Patches</b></p>
--

Class	Common Name	Scientific Name	Feature Type	Rank	Federal Protection Status	State Protection Status	Grank	Srank
	Least Tern	<i>Sternula antillarum</i>	Foraging	4	NA	State Endangered	G4	S1B,S1N
	Little Blue Heron	<i>Egretta caerulea</i>	Foraging	2	NA	Special Concern	G5	S3B,S3N
	Northern Harrier	<i>Circus cyaneus</i>	Breeding Sighting	4	NA	State Endangered	G5	S1B,S3N
	Northern Harrier	<i>Circus cyaneus</i>	Nest	4	NA	State Endangered	G5	S1B,S3N
	Osprey	<i>Pandion haliaetus</i>	Foraging	3	NA	State Threatened	G5	S2B,S4N
	Osprey	<i>Pandion haliaetus</i>	Nest	3	NA	State Threatened	G5	S2B,S4N
	Peregrine Falcon	<i>Falco peregrinus</i>	Nest	4	NA	State Endangered	G4	S1B,S3N
	Red-headed Woodpecker	<i>Melanerpes erythrocephalus</i>	Breeding Sighting	3	NA	State Threatened	G5	S2B,S2N
	Red-shouldered Hawk	<i>Buteo lineatus</i>	Breeding Sighting	4	NA	State Endangered	G5	S1B,S3N
	Snowy Egret	<i>Egretta thula</i>	Foraging	2	NA	Special Concern	G5	S3B,S4N
	Tricolored Heron	<i>Egretta tricolor</i>	Foraging	2	NA	Special Concern	G5	S3B,S3N
	Wood Thrush	<i>Hylocichla mustelina</i>	Breeding Sighting	2	NA	Special Concern	G4	S3B,S4N
	Yellow-crowned Night-heron	<i>Nyctanassa violacea</i>	Foraging	3	NA	State Threatened	G5	S2B,S2N

<p><b>Rare Wildlife Species or Wildlife Habitat for Riparian Zone Width Determination Within One Mile of the Project Site Based on Search of Landscape Project 3.3 Species Based Patches</b></p>
--

Class	Common Name	Scientific Name	Feature Type	Rank	Federal Protection Status	State Protection Status	Grank	Srank
<i>Reptilia</i>								
	Eastern Box Turtle	Terrapene carolina carolina	Occupied Habitat	2	NA	Special Concern	G5T5	S3
	Spotted Turtle	Clemmys guttata	Occupied Habitat	2	NA	Special Concern	G5	S3

**Vernal Pool Habitat for Riparian Zone Width Determination  
 Within One Mile of the Project Site  
 Based on Search of Landscape Project 3.3**

<b>Vernal Pool Habitat Type</b>	<b>Vernal Pool Habitat ID</b>
Vernal habitat area	2642
Vernal habitat area	2643
Vernal habitat area	2649
Potential vernal habitat area	49
Potential vernal habitat area	67
Potential vernal habitat area	76
Potential vernal habitat area	77
Potential vernal habitat area	78
Potential vernal habitat area	83
Potential vernal habitat area	86
Potential vernal habitat area	94
Potential vernal habitat area	111
Potential vernal habitat area	119
Total number of records:	13

**Other Animal Species for Riparian Zone Width Determination  
 Within One Mile of the Project Site  
 Based on Additional Species Tracked by  
 Endangered and Nongame Species Program**

<b>Scientific Name</b>	<b>Common Name</b>	<b>Federal Protection Status</b>	<b>State Protection Status</b>	<b>Grank</b>	<b>Srank</b>
<i>Invertebrate Animals</i>					
Callophrys henrici	Henry's Elfin			G5	S3S4
Cicindela dorsalis media	Southeastern Beach Tiger Beetle			G3G4T3T4	S1S2
Total number of records:	2				

## Appendix D.

CAPE MAY COUNTY TRAIL PLANNING UPPER and DENNIS TOWNSHIPS, NJ Opinion of Probable Construction Cost			(1) Beesleys Point Trail Head to Rail Crossing at Tuckahoe Rd		(2) Tuckahoe Road to Rail/Trail Connection at Tyler Rd		(3) Rail/Trail Connection at Tyler Rd to Peach Orchard Rd		(4) Trail Connection at Peach Orchard Rd to Connection at Corsons Tavern Rd		(5) Connection at Corsons Tavern Rd to Dennis Twp Trail Head	
Item	Unit Cost	Unit	Quantity	Cost	Quantity	Cost	Quantity	Cost	Quantity	Cost	Quantity	Cost
Construction Layout	\$ 25,000	LS	2	\$ 50,000	2	\$ 50,000	2	\$ 50,000	3	\$ 75,000	2	\$ 50,000
Mobilization	\$ 50,000	LS	1	\$ 50,000	1	\$ 50,000	1	\$ 50,000	1	\$ 50,000	1	\$ 50,000
Clearing and Grubbing	\$ 10,000	ACRE	0.20	\$ 2,000	0.20	\$ 2,000	0.50	\$ 5,000	5.3	\$ 53,000	3.0	\$ 30,000
Paved 10' Wide Trail Section (exc/section inclusive)	\$ 130	LF	13,920	\$ 1,809,600	17,740	\$ 2,306,200	6,260	\$ 813,800	14,780	\$ 1,921,400	8,230	\$ 1,069,900
Pav't Section - Road Widening (3' wide avg.)	\$ 50	LF	700	\$ 35,000	0	\$ -	0	\$ -	3,500	\$ 175,000	4,550	\$ 227,500
At-Grade Crossing with Flashing Signal	\$ 30,000	EA	1	\$ 30,000	4	\$ 120,000	1	\$ 30,000	0	\$ -	2	\$ 60,000
Post/rail fence	\$ 25	LF	2,500	\$ 62,500	9,000	\$ 225,000	600	\$ 15,000	3,800	\$ 95,000	0	\$ -
Wayfinding Signage	\$ 2,000	EA	2	\$ 4,000	0	\$ -	2	\$ 4,000	3	\$ 6,000	3	\$ 6,000
Boardwalk	\$ 250	LF	0	\$ -	0	\$ -	400	\$ 100,000	0	\$ -	0	\$ -
Wetland Mitigation	\$ 25,000	LS	0.5	\$ 12,500	0	\$ -	3	\$ 75,000	4	\$ 100,000	1	\$ 25,000
Pavement Markings	\$ 2	LF	700	\$ 1,400	0	\$ -	2,200	\$ 4,400	4,250	\$ 8,500	5,800	\$ 11,600
Linear Bioremediation Basin	\$ 100	LF	650	\$ 65,000	0	\$ -	625	\$ 62,500	1,480	\$ 148,000	825	\$ 82,500
Erosion Control	\$ 3	LF	3,100	\$ 9,300	0	\$ -	12,000	\$ 36,000	29,000	\$ 87,000	16,500	\$ 49,500
Trail Head (10 Spaces-Inclusive)	\$ 40,000	LS	1	\$ 40,000	2	\$ 80,000	2	\$ 80,000	0	\$ -	2	\$ 80,000
Trail Head Amenities	\$ 10,000	EA	0	\$ -	1	\$ 10,000	1	\$ 10,000	0	\$ -	1	\$ 10,000
Trail Head Restroom	\$ 100,000	EA	0	\$ -	1	\$ 100,000	0	\$ -	0	\$ -	1	\$ 100,000
Seed/Fertilize/Mulch	\$ 2	LF	2,450	\$ 4,900	0	\$ -	6,260	\$ 12,520	14,780	\$ 29,560	8,230	\$ 16,460
Landscaping	\$ 2,000	LS	3	\$ 6,000	1	\$ 2,000	3	\$ 6,000	4	\$ 8,000	3	\$ 6,000
<i>Subtotal</i>				\$ 2,182,200		\$ 2,945,200		\$ 1,354,220		\$ 2,756,460		\$ 1,874,460
<i>Contingency 20%</i>				\$ 436,440		\$ 589,040		\$ 270,844		\$ 551,292		\$ 374,892
<i>General Conditions 10%</i>				\$ 218,220		\$ 294,520		\$ 135,422		\$ 275,646		\$ 187,446
<i>Subtotal Construction</i>				\$ 2,836,860		\$ 3,828,760		\$ 1,760,486		\$ 3,583,398		\$ 2,436,798
<i>Soft Costs (20%)</i>				\$ 567,372		\$ 765,752		\$ 352,097		\$ 716,680		\$ 487,360
<i>Construction Admin (5%)</i>				\$ 141,843		\$ 191,438		\$ 88,024		\$ 179,170		\$ 121,840
<b>TOTAL PER SEGMENT</b>				<b>\$ 3,546,075</b>		<b>\$ 4,785,950</b>		<b>\$ 2,200,608</b>		<b>\$ 4,479,248</b>		<b>\$ 3,045,998</b>

**TOTAL ALL SEGMENTS**

**\$ 18,057,878**

## Appendix E.



## SJTPO Public Meetings

*Cape May County Trail Connector & Policy Board*

### Upcoming Hybrid Public Meetings...

Join us for our public meetings. This will serve as the only email reminder for these meetings, but you may follow SJTPO on Twitter and Facebook for additional reminders as these meetings approach.

### Cape May County Trail Connector Meeting

The Cape May County Trail Connector seeks to close a critical gap between two existing high-quality trails - the Beesley's Point Trailhead and Dennis Township Trailhead. Once built, it will help complete a 105-mile trail from Cape May to Philadelphia.

SJTPO, Cape May County, Dennis Township, and Upper Township are working together to make this project a reality.

Join project representatives to get an update on the project and weigh in on the future of this important trail connection!

### Meeting Details

**Where:** Tuesday, April 19, 2023, from 6:30 PM to 7:30 PM

**Where:** This meeting will be held in a hybrid format.

To attend in person, the meeting will be held in the [Upper Township Municipal Building](#).

To attend **virtually**, the meeting will be held via Zoom. [Register now](#).



## Policy Board Meeting

SJTPO is providing the April Policy Board agenda at least twelve (12) days in advance of the public meeting to accommodate requests for services or accommodations (i.e., communication aids, language assistance) necessary for members of the public to participate. SJTPO requires notice at least seven (7) business days in advance to meet requests adequately. For more information, visit the [Title VI](#) webpage.

The agenda has been posted to the [Policy Board](#) webpage. The complete agenda packet, with additional details, will be available seven (7) days before the scheduled meeting.

## Meeting Details

**Where:** Monday, April 24, 2023 at 10:00 AM

**Where:** This meeting will be held in a hybrid format.

To attend **in person**, the meeting will be held in the [Vineland City Hall Caucus Room](#).

To attend **virtually**, the meeting will be held via GoToMeeting. Connect to the meeting, [here](#).

You may also dial into the meeting using a phone.

**Dial:** +1 (646) 749-3129, or +1 (877) 309-2073 (Toll Free)

**Access Code:** 478-619-429

**First-time user of GoToMeeting?** GoToMeeting offers a first-time Attendee Guide. The guide is available, [here](#).

**Topics:** Personnel action [View the agenda >>>](#)

Members of the public can comment during the meeting on agenda items. Each commenter is provided three (3) minutes of speaking time. If attendance at the meeting is not possible, email comments to [info@sjtpo.org](mailto:info@sjtpo.org) or submit comments through the general comment form on the [Public Comment](#) webpage. Comments must be received by 9:00 AM on Monday, April 24, 2023.

SJTPO operates its programs and services without regard to race, color, or national origin, in accordance with Title VI of the Civil Rights Act of 1964, as amended. Any person who believes he/she/they has been subjected to discrimination on the basis of race, color, or national origin, or wishes to obtain additional information regarding SJTPO's Title VI obligations, may visit SJTPO's Title VI webpage at [www.sjtpo.org/TitleVI](http://www.sjtpo.org/TitleVI) or contact SJTPO's Title VI Coordinator at [TitleVI@sjtpo.org](mailto:TitleVI@sjtpo.org) or (856) 794-1941. A complaint must be filed within 180 days of the alleged discrimination.

Copyright © 2023 South Jersey Transportation Planning Organization (SJTPO). All rights reserved.  
You are receiving this email because you signed up via the South Jersey Transportation Planning Organization (SJTPO) website to receive information from us. Thank you!



**Our mailing address is:**  
South Jersey Transportation Planning Organization (SJTPO)  
782 S Brewster Rd, Unit B0  
Vineland, NJ 08361  
[Add us to your address book](#)

[unsubscribe from this list](#) [update subscription preferences](#)



SJTPO  
@SJTPO

...

A #publicmeeting will be held on Tuesday, April 19, to provide you with an update on the Cape May County Trail Connector project and to have you weigh in on the future of this important trail connection. Attend in person or register to attend via Zoom: [bit.ly/3UuaFDQ](https://bit.ly/3UuaFDQ)

## Cape May County Trail Connector Public Meeting

The Cape May County Trail Connector seeks to close a critical gap between two existing high quality trails—the Beesley's Point Trailhead and Dennis Township Trailhead. Once built, it will help complete a 105-mile trail from Cape May to Philadelphia.

South Jersey Transportation Planning Organization (SJTPO), Cape May County, Dennis Township, and Upper Township are working together to make this project a reality.

Now we need to hear from you!

Join us to get an update on the project and weigh in on the future of this important trail connection!

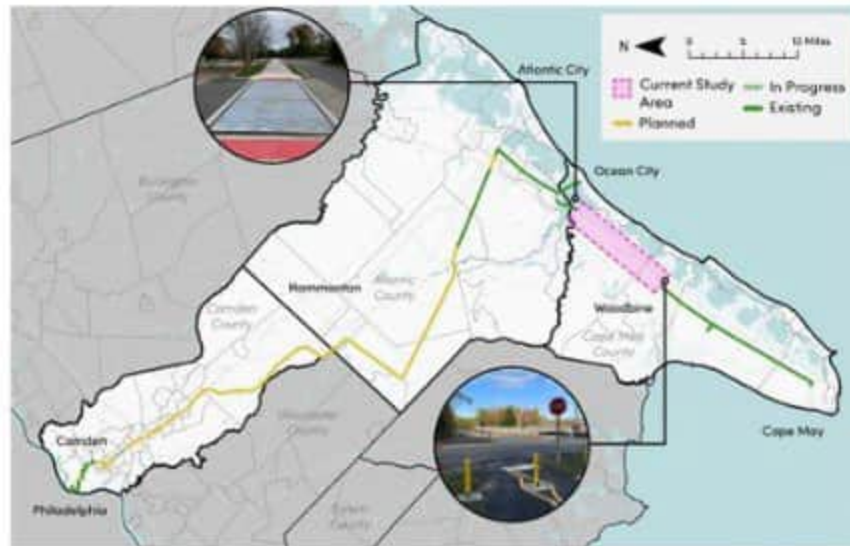
**Date:** April 19, 2023

**Time:** 6:30pm - 7:30pm

**Where:** Online on Zoom OR Streaming in person at Upper Township Municipal Building  
2100 Tuckahoe Rd  
Petersburg, NJ 08270

Register today: [tinyurl.com/CapeMayTrail](https://tinyurl.com/CapeMayTrail)

Learn more about the project: [www.sjtpo.org/capemaycotrailconnector](https://www.sjtpo.org/capemaycotrailconnector)



South Jersey  
Transportation  
Planning Organization



10:48 AM · Apr 12, 2023 · 26 Views



### Cape May County Trail Connector Public Meeting

Posted on April 12, 2022

The Cape May County Trail Connector seeks to close a critical gap between two existing high quality trails - the Bessley's Point Trailhead and Dennis Township Trailhead. Once built, it will help complete a 105-mile trail from Cape May to Philadelphia. SJTPO, Cape May County, Dennis Township, and Upper Township are working together to make this project a reality.

Join us for an update on the project and weigh in on the future of this important trail connection!

- Meeting date: Wednesday, April 19, 2022
- Time: 6:00 PM to 7:30 PM
- Location: Online via Zoom (register now) or in person at Upper Township Municipal Building (2200 Tuckahoe Road, Pebesburg, NJ 08270)

For additional information, visit the project webpage.



# Cape May County Trail Connector Public Meeting

The Cape May County Trail Connector seeks to close a critical gap between two existing high quality trails—the Beesley's Point Trailhead and Dennis Township Trailhead. Once built, it will help complete a 105-mile trail from Cape May to Philadelphia.

South Jersey Transportation Planning Organization (SJTPO), Cape May County, Dennis Township, and Upper Township are working together to make this project a reality.

Now we need to hear from you!

Join us to get an update on the project and weigh in on the future of this important trail connection!

**Date:** April 19, 2023

**Time:** 6:30pm - 7:30pm

**Where:** Online on Zoom OR Streaming in person at Upper Township Municipal Building  
2100 Tuckahoe Rd  
Petersburg, NJ 08270

**Register today:** [tinyurl.com/CapeMayTrail](https://tinyurl.com/CapeMayTrail)

Learn more about the project: [www.sjtpo.org/capemaycotrailconnector](http://www.sjtpo.org/capemaycotrailconnector)



South Jersey  
Transportation  
Planning Organization

