



# FFY 2020-2023 Transportation Improvement Program (TIP)

Executive Summary



South Jersey  
Transportation  
Planning Organization



## English

Attention: If you wish to request this publication in another language other than English, or wish to contact SJTPO for our language assistance, please call (856) 794-1941 or email [TitleVI@sjtpo.org](mailto:TitleVI@sjtpo.org). Additional charges may apply for reprint of our publications.

## Spanish / Español

Atención: Si desea solicitar esta publicación en otro idioma que no sea inglés, o desea comunicarse con SJTPO para recibir asistencia con nuestro idioma, llame al (856) 794-1941 o envíe un correo electrónico a [TitleVI@sjtpo.org](mailto:TitleVI@sjtpo.org). Pueden aplicarse cargos adicionales por la reimpresión de nuestras publicaciones.

## Chinese / 中文

注意：如果您希望使用英语以外的其他语言来请求本出版物，或者希望与SJTPO联系以获取我们的语言帮助，请致电 (856) 794-1941 或发送电子邮件至 [TitleVI@sjtpo.org](mailto:TitleVI@sjtpo.org)。重印我们的出版物可能需要支付额外费用。

## Vietnamese / Tiếng Việt

Lưu ý: Nếu bạn muốn yêu cầu xuất bản này bằng một ngôn ngữ khác không phải tiếng Anh, hoặc muốn liên hệ với SJTPO để được hỗ trợ ngôn ngữ của chúng tôi, vui lòng gọi (856) 794-1941 hoặc gửi email đến [TitleVI@sjtpo.org](mailto:TitleVI@sjtpo.org). Các khoản phí bổ sung có thể áp dụng cho việc tái bản các ấn phẩm của chúng tôi.

## Gujarati / ગુજરાતી

ધ્યાન: જો તમે અંગ્રેજી સિવાયની અન્ય કોઈ ભાષામાં આ પ્રકાશનની વિનંતી કરવા માંગતા હો, અથવા અમારી ભાષા સહાય માટે એસજેટીપીઓનો સંપર્ક કરવા માંગતા હો, તો કૃપા કરીને (856) 794-1941 પર કૉલ કરો અથવા શીર્ષક [TitleVI@sjtpo.org](mailto:TitleVI@sjtpo.org) પર ઇમેઇલ કરો. અમારા પ્રકાશનોને ફરીથી છાપવા માટે વધારાના શુલ્ક લાગુ થઈ શકે છે.

## Other Indic Languages:

### Bengali / বাংলা

মনোযোগ দিন: আপনি যদি এই প্রকাশনাকে ইংরেজি ব্যতীত অন্য কোনও ভাষায় অনুরোধ করতে চান বা আমাদের ভাষা সহায়তার জন্য এসজেটিপিওর সাথে যোগাযোগ করতে চান, তবে (856) 794-1941 কল করুন বা ইমেল [TitleVI@sjtpo.org](mailto:TitleVI@sjtpo.org) আমাদের প্রকাশনা পুনরায় মুদ্রণের জন্য অতিরিক্ত চার্জ প্রযোজ্য হতে পারে।

### Hindi / हिंदी

ध्यान दें: यदि आप अंग्रेजी के अलावा किसी अन्य भाषा में इस प्रकाशन का अनुरोध करना चाहते हैं, या हमारी भाषा सहायता के लिए SJTPO से संपर्क करना चाहते हैं, तो कृपया (856) 794-1941 पर कॉल करें या [TitleVI@sjtpo.org](mailto:TitleVI@sjtpo.org) पर ईमेल करें। हमारे प्रकाशनों के पुनर्मुद्रण के लिए अतिरिक्त शुल्क लागू हो सकते हैं।

### Nepali / नेपाली

ध्यान दिनुहोस्: यदि तपाईं यस प्रकाशनलाई अ other ग्रेजी बाहेक अर्को भाषामा अनुरोध गर्न चाहनुहुन्छ वा SJTPO लाई सम्पर्क गर्न चाहनुहुन्छ भने हाम्रो भाषा सहयोगका लागि (856) 794-1941 या ईमेल [TitleVI@sjtpo.org](mailto:TitleVI@sjtpo.org) मा कल गर्नुहोस्। थप शुल्कहरू हाम्रा प्रकाशनहरूको पुनः प्रिन्टको लागि लागू हुन सक्छ।

### Urdu / اردو

اشاعت اس میں زبان اور کسی علاوہ کے انگریزی آپ اگر: دھیان ایس لئے کے امداد کی زبان ہماری یا، ہیں چاہتے کرنا درخواست کی (856) 794-1941 کرم براہ، تو ہیں چاہتے کرنا رابطہ سے او پی ٹی جے میل ای پر [TitleVI@sjtpo.org](mailto:TitleVI@sjtpo.org) عنوان یا کریں کال پر 1941 لئے کے اشاعت دوبارہ کے اشاعتوں ہماری چارجز اضافی کریں۔ ہیں۔ سکتے لگ

### Punjabi / ਪੰਜਾਬੀ

ਧਿਆਨ ਦਿਓ: ਜੇ ਤੁਸੀਂ ਇਸ ਪ੍ਰਕਾਸ਼ਨ ਨੂੰ ਅੰਗਰੇਜ਼ੀ ਤੋਂ ਇਲਾਵਾ ਕਿਸੇ ਹੋਰ ਭਾਸ਼ਾ ਵਿਚ ਬੋਲਣੀ ਕਰਨਾ ਚਾਹੁੰਦੇ ਹੋ, ਜਾਂ ਸਾਡੀ ਭਾਸ਼ਾ ਸਹਾਇਤਾ ਲਈ ਐਸ ਜੇ ਟੀ ਪੀ ਓ ਨਾਲ ਸੰਪਰਕ ਕਰਨਾ ਚਾਹੁੰਦੇ ਹੋ, ਤਾਂ ਕਿਰਪਾ ਕਰਕੇ (856) 794-1941 'ਤੇ ਕਾਲ ਕਰੋ ਜਾਂ ਈਮੇਲ [TitleVI@sjtpo.org](mailto:TitleVI@sjtpo.org) ਸਾਡੇ ਪ੍ਰਕਾਸ਼ਨ ਦੁਬਾਰਾ ਛਾਪਣ ਲਈ ਵਾਧੂ ਖਰਚੇ ਲਾਗੂ ਹੋ ਸਕਦੇ ਹਨ।

Created using Google Translate; last updated by SJTPO 8/17/2020

## Contents

What is the Transportation Improvement Program (TIP)?.....	4
SJTPO & The Role of MPOs .....	5
Project Funding and Evaluation .....	6
Impact of the TIP on the SJTPO Region.....	8
Reading the TIP Tables.....	8
Understanding the TIP Project Sheet.....	10
NJ TRANSIT Projects and Programs .....	11
NJDOT Statewide Projects and Programs .....	12
Regional Projects and Programs .....	16
Acronyms .....	19

## Disclaimer

The preparation of this report has been funded in part by the U.S. Department of Transportation, Federal Transit Administration and Federal Highway Administration. This document is disseminated under the sponsorship of the U.S. Department of Transportation in the interest of information exchange. The United States Government assumes no liability for its contents or its use thereof.

SJTPO fully complies with Title VI of the Civil Rights Act of 1964, the Civil Rights Restoration Act of 1987, Executive Order 72898 on Environmental Justice, and related nondiscrimination mandates in all programs and activities. SJTPO's website, [www.sjtpo.org](http://www.sjtpo.org), may be translated into multiple languages. Publications and other public documents can usually be made available in alternative languages and formats, if requested. SJTPO's public meetings are always held in ADA-accessible facilities and held in transit-accessible locations whenever possible. Translation, interpretation, or other auxiliary services can be provided to individuals who submit a request at least seven (7) days prior to a public meeting. Translation and interpretation services for SJTPO's projects, products, and planning processes are available, generally free of charge, by calling (856) 794-1941, or by completing a request form available at [www.sjtpo.org/TitleVI](http://www.sjtpo.org/TitleVI). All requests will be accommodated to the greatest extent possible. Any person who believes they have been aggrieved by an unlawful discriminatory practice by SJTPO under Title VI has a right to file a formal complaint. Any such complaint must be in writing and filed with SJTPO's Title VI Compliance Manager and/or the appropriate state or federal agency within 180 days of the alleged discriminatory occurrence. For more information on SJTPO Title VI program or to obtain a Title VI Complaint Form, please visit: [www.sjtpo.org/TitleVI](http://www.sjtpo.org/TitleVI), call (856) 794-1941, or email [TitleVI@sjtpo.org](mailto:TitleVI@sjtpo.org).

## What is the Transportation Improvement Program (TIP)?

The Transportation Improvement Program (TIP) is a federally required document, updated every two years, which details all federal and state funded surface transportation projects and programs over a specified period of time. SJTPO's current TIP is the federal fiscal year (FFY) 2020-2029 TIP, effective from October 1, 2019 through September 30, 2029. Whereas, the TIP includes a list of project and programs for ten (10) years, the first four years (FFY 2020-2023) represent the "Fiscally Constrained TIP," plus six informational years (FFY 2024-2029). Fiscal constraint for the TIP means that it includes sufficient financial information for demonstrating that projects in the TIP can be implemented using committed, available or reasonably available revenue sources, with reasonable assurance that the federally supported transportation system is being adequately operated and maintained. Transportation projects must be included in the TIP to receive most types of federal funding.

### Understanding the Years of the TIP

	The Full TIP	Fiscally Constrained Portion	Informational Portion
<b>Federal Fiscal Years (FFYs)</b>	FFY 2020-2029	FFY 2020-2023	FFY 2024-2029
<b>Number of Years</b>	10	4	6
<b>Effective Dates</b>	October 1, 2019 – September 30, 2029	October 1, 2019 – September 30, 2023	October 1, 2023 – September 30, 2029

SJTPO's TIP compliments the Statewide Transportation Improvement Program (STIP) for the State of New Jersey, which includes the TIPs from all three Metropolitan Planning Organizations (MPOs) in the state: SJTPO, the Delaware Valley Regional Planning Commission (DVRPC), and the North Jersey Transportation Planning Authority (NJTPA).

The TIP, which SJTPO also refers to as "the list of projects," includes regional highway projects and programs, the New Jersey Department of Transportation (NJDOT) Statewide programs, and the New Jersey Transit (NJ TRANSIT) programs. All projects identified as potential candidates for inclusion in the TIP are screened to verify project scope, status, schedule, and cost. The resulting list of projects included in the TIP are analyzed independently by the participating agencies, then used as the basis for publishing the TIP document.

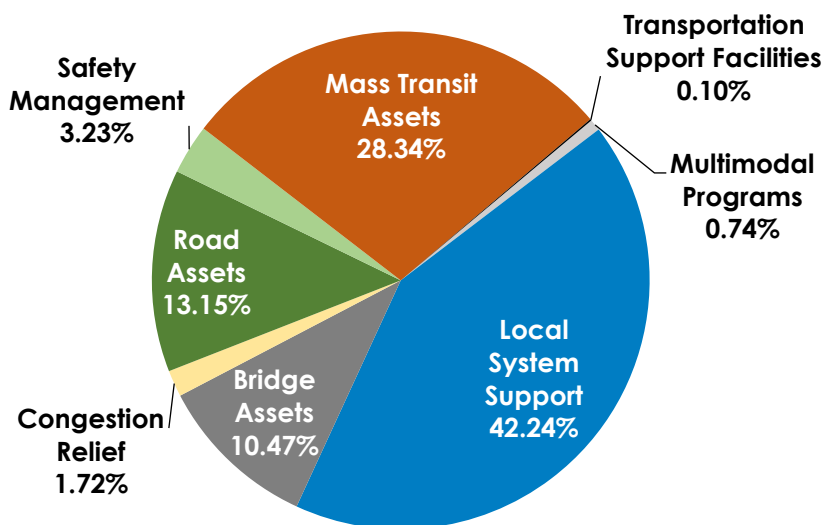
There are a variety of project types in the TIP including Local Systems Support, Mass Transit Assets, Road Assets, and Congestion Relief, among others. [Figure 1](#) displays a breakdown of the types of projects included in the TIP, accounting for projects led by a variety of agencies including NJDOT, NJ TRANSIT, or other county/ municipal partners.

Although a new TIP is developed every two years, the TIP can be updated as needed through the TIP Amendment Process. Once the TIP is adopted by the SJTPO Policy Board, approved by the Governor, and the State TIP is approved by the federal government, there are certain procedures established for making any changes to the TIP. These procedures are outlined in a joint

Memorandum of Understanding (MOU) between the DVRPC, NJTPA, SJTPO, NJ TRANSIT and NJDOT.

Changes to the TIP/STIP fall within two broad categories: either an Amendment or Modification. One goal of the MOU is to simplify the TIP Amendment and Modification process as much as possible. Accordingly, the involved state agency may make certain changes, such as small cost increases, without any action by SJTPO, which is generally a Modification. More significant changes, such as larger cost increases

**Figure 1: TIP Project Types**



or adding or deleting a project, are reviewed by SJTPO and the SJTPO Policy Board and are generally classified as an Amendment. These revisions must maintain fiscal constraint, the project selection process, transportation conformity, and appropriate public involvement.

## SJTPO & The Role of MPOs

SJTPO serves as the MPO for southern New Jersey, consisting of Atlantic, Cape May, Cumberland, and Salem Counties. Under federal law, transportation planning for urbanized areas is carried out through MPOs, which coordinate planning activities of the participating groups. SJTPO serves as a technical resource, provides access to funding, and works to provide a regional approach to address transportation planning and engineering issues.

Under federal law, transportation planning for urbanized areas is carried out through regional MPOs. Through multiple Acts passed since 1990, MPOs are entrusted with an expanded role in transportation planning and capital programming. Generally, passed by Congress and signed by the President, a funding and authorization bill governs federal surface transportation spending in the United States. The legislation provides funding for federal highway, highway safety, transit, and rail programs for a specified period.

In addition to the TIP, the Regional Transportation Plan (RTP) is central to the planning implementation process. In contrast to the TIP, which contains programmed and committed projects for the next ten (10) years, the RTP is SJTPO's main document for long-term planning. It provides a framework for guiding investment decisions over a period of at least 20 years, and includes not only committed projects, including those contained in the TIP, but also longer-term projects, as well as short and long-range strategies, which are actions taken that can lead to

projects. The current RTP, RTP 2050, has a time horizon that extends 30 years, starting with 2020 and going to 2050.

## Project Funding and Evaluation

The TIP includes regional highway projects and programs, NJDOT Statewide programs, and NJ TRANSIT programs. Over \$1.0 billion of federal and state funding for FFY 2020-2029 is identified for transportation improvements within the four county SJTPO region. The Federal Highway Administration (FHWA) and the Federal Transit Administration (FTA) are the major funding sources for projects in the TIP. In addition, the State of New Jersey provides funds through appropriations and the Transportation Trust Fund (TTF) that have been used to fund selected projects. Counties, municipalities, private developers, toll road authorities, and transit operators are also potential sources of project funding. Projects are funded under various funding sources, dependent upon the type of work to be completed. Federal law and regulations require that the TIP and STIP be financially constrained for the first four years, meaning “planned federal aid expenditures” cannot exceed “projected revenues.”

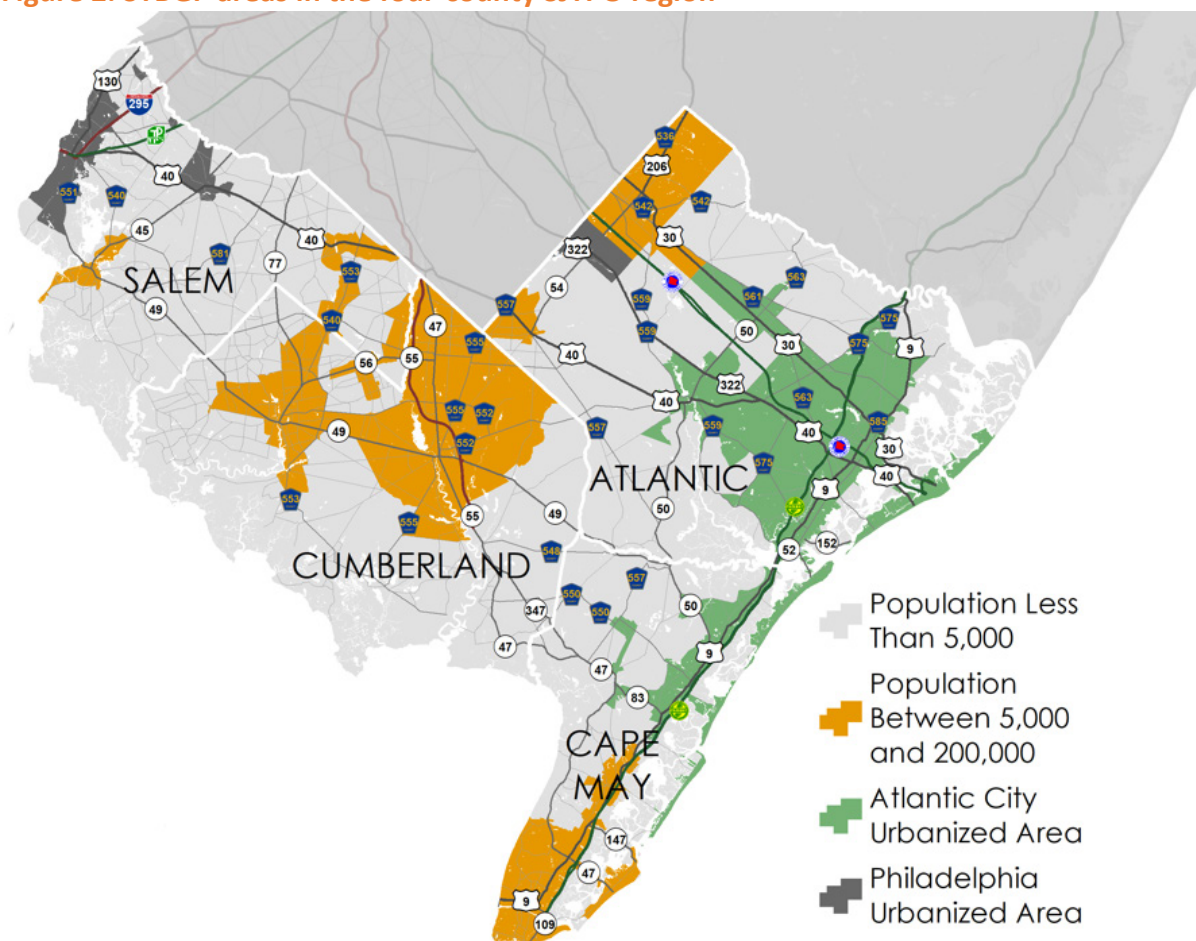
For federally funded projects that are initiated by SJTPO’s county partners, the main source of funding is the Surface Transportation Block Grant Program (STBGP). These projects are often referred to as Local Lead projects since the county serves as the project sponsor and is the responsible agency to move the project through the project delivery process. The STBGP funding may be used on highway, bridge, or transit capital projects, planning and research programs, and a variety of other eligible project types.

STBGP funding is suballocated to areas of New Jersey based on their relative share of the state’s population. The three STBGP funding categories available for use in the SJTPO region are:

- **STBGP-AC:** designated specifically to the Atlantic City Urbanized Area with a population equal or greater than 200,000,
- **STBGP-B5K200K:** areas with a population between 5,000 and 199,999, and
- **STBGP-L5K:** areas with a population less than 5,000.

Figure 2 shows the three categories of STBGP funding received by SJTPO in accordance with the surrounding population area in which these funds are eligible to be spent.

Figure 2: STBGP areas in the four-county SJTPO region



SJTPO has a Project Selection Process and ranking system that is used when needed to evaluate Local Lead projects from a regional perspective. The project ranking system assigns a numeric point value to each potential project based on the degree to which it satisfies the various criteria. For projects, other than Local Lead projects, using other funding sources, the project selection process may differ based on the nature of the funding. Projects that meet certain criteria may qualify for funding from another SJTPO program. These funding sources include the Highway Safety Improvement Program (HSIP)-funded SJTPO Local Safety Program, Congestion Mitigation and Air Quality (CMAQ), Transportation Alternatives Program (TAP), and Safe Routes to School (SRTS).

All projects within the TIP, regardless of funding source of the project sponsor, are reviewed for their effect on air quality, and consequently their degree of conformity to air quality standards established by the U.S. Environmental Protection Agency (US EPA). Transportation conformity is demonstrated when future planned and federally funded highway and transit projects are determined not to cause new air quality violations, worsen existing violations, or delay timely attainment of the National Ambient Air Quality Standards (NAAQS). Conformity findings must also be based on established budgets for “the ozone precursors” pollutants: volatile organic compounds (VOCs) and oxides of nitrogen (NOx). The purpose of the Transportation Conformity



document is to demonstrate conformity of the projects within the RTP and TIP with the 2015 8-hour Ozone NAAQS.

Based upon the conformity analysis, SJTPO has demonstrated that the projects and programs within the FFY 2020-2029 TIP and the current RTP will continue to meet the 2015 8-Hour Ozone Standards and conforms to the State Implementation Plan (SIPs). The Transportation Conformity document is separately approved from the TIP document, but with this approval the Transportation Conformity findings officially becomes part of the approved TIP.

## **Impact of the TIP on the SJTPO Region**

The TIP links the transportation planning process to implementation. Development of the TIP begins one year prior to the expected date of TIP adoption, in close collaboration with the subregional planning partners, state agencies, and the public. When the draft TIP and Transportation Conformity are prepared, SJTPO begins a public involvement process to ensure that individuals, affected agencies, employees, private providers of transportation, and other interested parties have an opportunity to comment on the proposed program. In keeping with federal mandates, SJTPO seeks to actively promote public participation in the planning process. Following adoption, SJTPO continues to collaborate with state and subregional partners to track project status and aid with the federal authorization process.

The TIP and STIP are a valuable reference for implementing agencies such as NJDOT, NJ TRANSIT, and all other parties interested in transportation issues in the state. Hundreds of projects and millions of dollars' worth of funding are put towards improving transportation in the State of New Jersey each year. The TIP can be utilized to learn more about all these projects planned for the coming years, with transparency about the project costs, funding sources, and timelines.

The TIP represents a consensus among MPO members, other transportation interest groups, and the public in the region as to what improvements should have a priority for available funds. When a project is in the approved TIP, it is scheduled for funding; however, it is not assured of implementation. TIP projects may be subject to additional study and analysis or public hearings to justify implementation.

While the TIP represents an estimate of the projects planned for advancement during the program year, there may be a need for project revisions throughout the life of the TIP. Revisions to the TIP requires SJTPO, NJDOT, or NJ TRANSIT to act in modifying or amending the TIP, as outlined in a joint Memorandum of Understanding (MOU) between these agencies.

## **Reading the TIP Tables**

The majority of the TIP document is made up of tables and charts detailing funding resources available in the State and information about each project included in the TIP and subsequent STIP.



[NJDOT and NJ TRANSIT Expenditures and Resources \(Tables 1-5\)](#)

The first five tables list the expenditures and resources for both NJDOT and NJ TRANSIT, with figures shown in millions. Expenditures are any funds that will be spent by the respective agencies, and resources are funds that are available to the State from specific funding categories. Both NJDOT and NJ TRANSIT list their funds, federal and otherwise, for each federal fiscal year included in the TIP. In the current TIP, this includes FFY 2020 through FFY 2029.

[Metropolitan Planning Organization \(MPO\) Distributions \(Tables 6-10\)](#)

The next five tables in the TIP detail how funds are distributed from the State, NJDOT, and NJ TRANSIT to each of the three New Jersey MPOs with figures shown in millions. Of the total amount of funds distributed to SJTPO, \$11.7 million is programmed by SJTPO from STBGP sources, and an additional \$3.9 million from two competitive funding sources, CMAQ and the Highway Safety Improvement Program (HSIP).

[NJDOT Multi-year Project Funding \(Tables 11-12\)](#)

These two tables list funds, with figures shown in millions, programmed for NJDOT multi-year funded federal projects and NJDOT multi-year funded state projects. These projects are long-term, multi-year projects at either the federal or state level. Each table details funds programmed for each available project over the TIP FFY years and any prior FFY years.

[Regional Highway, NJDOT, and NJ TRANSIT Projects and Programs \(Sections 2, 3, and 4\)](#)

The TIP project tables are broken up by State organization: Regional Highway, NJDOT, and NJ TRANSIT. Within each organization's section, the format and layout of the tables remains the same.

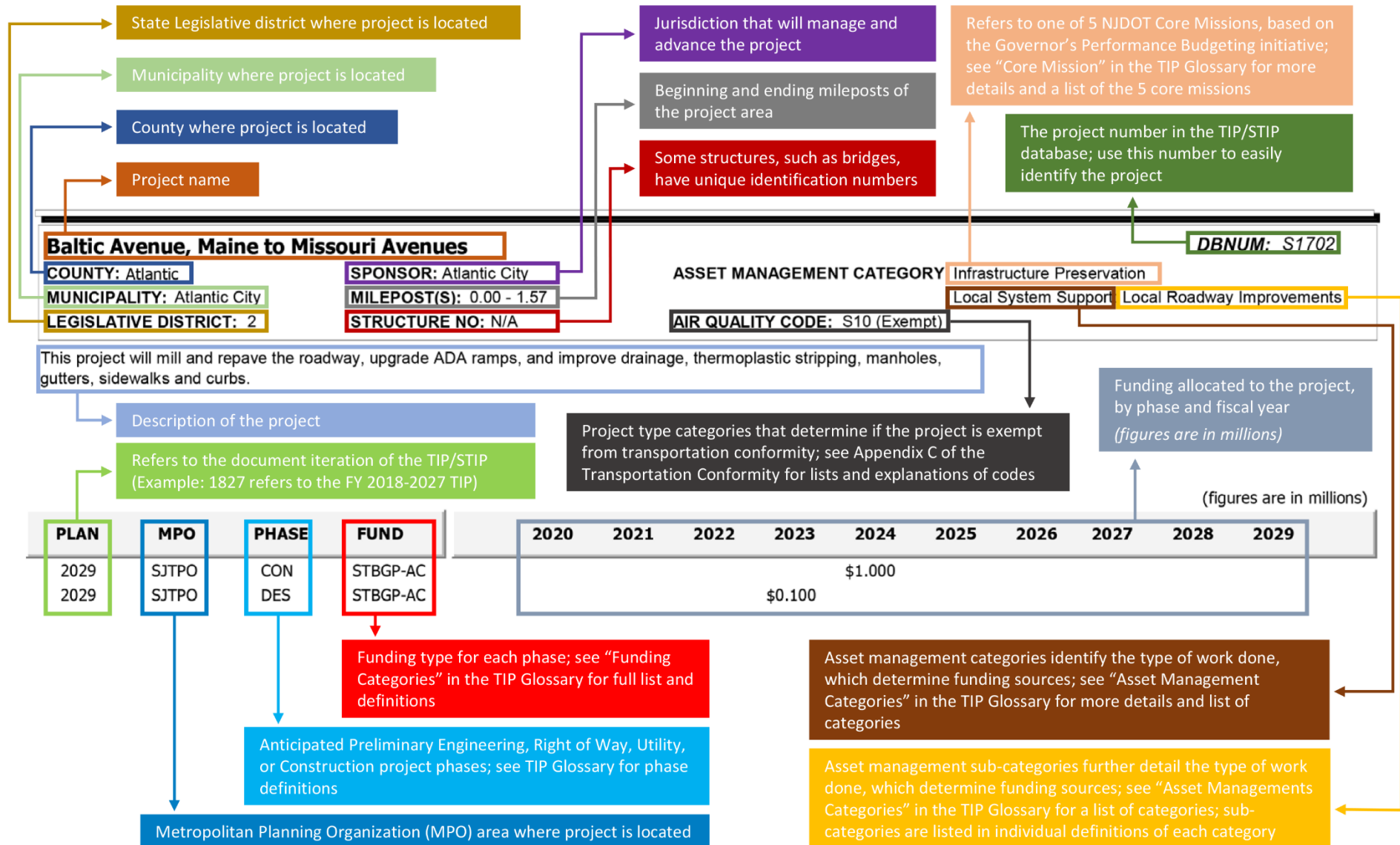
The first table in each section lists the projects in the TIP alphabetically by name. Across the project row are details on the sponsor of the project, where it is located, what MPO it falls under, the phase it is in (as of TIP publication), the funding source, and funding amounts for year FFY 2020 through 2029.

Following this table is a list of charts with further details about each project, listed individually. This includes more information not provided in the chart above including a project description, asset management category, air quality code, phase cost breakdowns, and any notes on the project.

Regional Highway Projects/Programs includes those projects or programs which are specifically within the SJTPO region, including those sponsored by NJDOT, counties within the SJTPO region (Locally Lead), as well as programs sponsored by NJDOT, noting Local Lead as the project sponsor. NJDOT Statewide Projects/Programs includes various project or programs funded Statewide with the funding listed in the TIP allocated specifically to the SJTPO region. As the name implies NJ TRANSIT Projects/Programs includes all projects or programs led by NJ TRANSIT, with the funding listed specifically allocated to the SJTPO region.

The graphic on the following page can also be used as a guide for reading and understanding these charts.

## Understanding the TIP Project Sheet



## NJ TRANSIT Projects and Programs

DBNUM	Project Name	FUND	PHASE	COUNTY	MUNICIPALITY	2020	2021	2022	2023	2024	2025	2026	2027	2028	2029
T143	ADA--Platforms/Stations	STATE	ERC	Various	Various	\$0.035	\$0.035	\$0.070	\$0.070	\$0.070	\$0.070	\$0.070	\$0.070	\$0.070	\$0.070
T05	Bridge and Tunnel Rehabilitation	STATE	ERC	Various	Various	\$0.206	\$0.284	\$0.265	\$0.343	\$0.343	\$0.343	\$0.343	\$0.343	\$0.343	\$0.343
T111	Bus Acquisition Program	STATE	CAP	Various	Various	\$8.453	\$7.476	\$7.481	\$14.311	\$10.990	\$10.990	\$10.990	\$10.990	\$10.990	\$10.990
T06	Bus Passenger Facilities/Park and Ride	STATE	ERC	Various	Various	\$0.056	\$0.056	\$0.056	\$0.056	\$0.056	\$0.056	\$0.056	\$0.056	\$0.056	\$0.056
T08	Bus Support Facilities and Equipment	SECT 5339	ERC	Various	Various				\$0.884	\$0.884	\$0.884	\$0.884	\$0.884	\$0.884	\$0.884
		STATE	ERC	Various	Various	\$0.345	\$0.345	\$0.345	\$1.395	\$1.395	\$1.395	\$1.395	\$1.395	\$1.395	\$1.395
T09	Bus Vehicle and Facility Maintenance/Capital Maintenance	STATE	EC	Various	Various										\$0.001
T68	Capital Program Implementation	STATE	ERC	Various	Various	\$1.503	\$1.503	\$1.503	\$1.503	\$1.503	\$1.503	\$1.503	\$1.503	\$1.503	\$1.503
T515	Casino Revenue Fund	CASINO REVENUE	CAP	Various	Various	\$1.296	\$1.301	\$1.301	\$1.301	\$1.301	\$1.301	\$1.301	\$1.301	\$1.301	\$1.301
T13	Claims support	STATE	EC	Various	Various										\$0.001
T170	Cumberland County Bus Program	SECT 5307	CAP	Cumberland	Various	\$1.020	\$1.020	\$1.020	\$1.020	\$1.020	\$1.020	\$1.020	\$1.020	\$1.020	\$1.020
T16	Environmental Compliance	STATE	ERC	Various	Various	\$0.210	\$0.210	\$0.210	\$0.210	\$0.210	\$0.210	\$0.210	\$0.210	\$0.210	\$0.210
T43	High Speed Track Program	STATE	ERC	Various	Various	\$0.012	\$0.012	\$0.012	\$0.032	\$0.032	\$0.032	\$0.032	\$0.032	\$0.032	\$0.032
T20	Immediate Action Program	STATE	ERC	Various	Various	\$0.421	\$0.484	\$0.591	\$1.673	\$1.138	\$0.579	\$0.574	\$1.091	\$1.396	\$1.396
T95	Light Rail Infrastructure Improvements	STATE	ERC	Various	Newark City			\$0.210	\$0.910	\$0.910	\$0.910	\$0.910	\$0.910	\$0.910	\$0.910
T53E	Locomotive Overhaul	STATE	CAP	Various	Various	\$0.094	\$0.063	\$0.063	\$0.063	\$0.063	\$0.063	\$0.063	\$0.063	\$0.063	\$0.063
T122	Miscellaneous	STATE	ERC	Various	Various	\$0.315	\$0.217	\$0.035	\$0.035	\$0.035	\$0.035	\$0.035	\$0.035	\$0.035	\$0.035
T44	NEC Improvements	SECT 5307	ERC	Various	Various				\$0.153	\$0.035	\$0.195	\$0.195	\$0.047	\$0.047	\$0.047
		SECT 5337	ERC	Various	Various				\$0.035	\$0.283	\$0.283	\$0.283	\$0.283	\$0.283	\$0.283
		STATE	ERC	Various	Various				\$0.290	\$0.213	\$0.213	\$0.213	\$0.213	\$0.213	\$0.213
T55	Other Rail Station/Terminal Improvements	STATE	ERC	Various	Various	\$0.109	\$0.109	\$0.109	\$0.109	\$0.109	\$0.109	\$0.109	\$0.109	\$0.109	\$0.109
T121	Physical Plant	STATE	ERC	Various	Various	\$0.117	\$0.117	\$0.117	\$0.117	\$0.117	\$0.117	\$0.117	\$0.117	\$0.117	\$0.117
T135	Preventive Maintenance-Bus	SECT 5307	CAP	Various	Various	\$7.888	\$7.888	\$7.888	\$7.888	\$10.068	\$10.068	\$10.068	\$10.068	\$10.068	\$10.068
T39	Preventive Maintenance-Rail	SECT 5307	CAP	Various	Various	\$1.268	\$1.268	\$1.396	\$1.396	\$1.010	\$1.010	\$1.010	\$1.010	\$1.010	\$1.010
T39	Preventive Maintenance-Rail	SECT 5337	CAP	Various	Various	\$2.022	\$2.022	\$2.022	\$2.022	\$2.022	\$2.022	\$2.022	\$2.022	\$2.022	\$2.022
T106	Private Carrier Equipment Program	STATE	CAP	Various	Various	\$0.280	\$0.280	\$0.210	\$0.210	\$0.210	\$0.210	\$0.210	\$0.210	\$0.210	\$0.210
T34	Rail Capital Maintenance	STATE	CAP	Various	Various	\$1.225	\$1.225	\$1.225	\$1.225	\$1.225	\$1.225	\$1.225	\$1.225	\$1.225	\$1.225
T53G	Rail Fleet Overhaul	STATE	CAP	Various	Various	\$0.119									
T112	Rail Rolling Stock Procurement	CMAQ	CAP	Various	Various			\$0.001			\$0.794	\$0.930	\$0.930	\$0.930	\$0.930
		SECT 5307	CAP	Various	Various	\$0.895	\$0.606	\$0.792	\$0.706	\$0.930	\$0.930	\$0.930	\$0.930	\$0.930	\$0.930
		SECT 5337	CAP	Various	Various			\$0.078							
		STATE	CAP	Various	Various	\$0.854	\$1.712	\$2.942	\$1.173	\$2.095	\$1.859	\$2.157	\$2.157	\$2.157	\$2.157
T37	Rail Support Facilities and Equipment	STATE	ERC	Various	Various	\$0.068	\$0.068	\$0.072	\$0.072	\$0.072	\$0.072	\$0.072	\$0.072	\$0.072	\$0.072
T509	Safety Improvement Program	STATE	ERC	Various	Various	\$0.012	\$0.012	\$0.012	\$0.012	\$0.012	\$0.012	\$0.012	\$0.012	\$0.012	\$0.012
T150	Section 5310 Program	SECT 5310	CAP	Various	Various	\$0.511	\$0.511	\$0.511	\$0.511	\$0.511	\$0.511	\$0.511	\$0.511	\$0.511	\$0.511
		STATE	CAP	Various	Various	\$0.105	\$0.105	\$0.105	\$0.105	\$0.105	\$0.105	\$0.105	\$0.105	\$0.105	\$0.105
T151	Section 5311 Program	MATCH	CAP	Various	Various	\$0.133	\$0.133	\$0.133	\$0.133	\$0.133	\$0.133	\$0.133	\$0.133	\$0.133	\$0.133
		SECT 5311	CAP	Various	Various	\$0.301	\$0.301	\$0.301	\$0.301	\$0.301	\$0.301	\$0.301	\$0.301	\$0.301	\$0.301
		STATE	CAP	Various	Various	\$0.007	\$0.007	\$0.007	\$0.007	\$0.007	\$0.007	\$0.007	\$0.007	\$0.007	\$0.007
T508	Security Improvements	STATE	SWI	Various	Various	\$0.183	\$0.183	\$0.183	\$0.183	\$0.183	\$0.183	\$0.183	\$0.183	\$0.183	\$0.183



## South Jersey Transportation Planning Organization

DBNUM	Project Name	FUND	PHASE	COUNTY	MUNICIPALITY	2020	2021	2022	2023	2024	2025	2026	2027	2028	2029
T50	Signals and Communications/Electric Traction Systems	STATE	ERC	Various	Various	\$0.136	\$0.136	\$0.136	\$0.136	\$0.136	\$0.136	\$0.136	\$0.136	\$0.136	\$0.136
T120	Small/Special Services Program	STATE	EC	Various	Various	\$0.096	\$0.096	\$0.096	\$0.096	\$0.096	\$0.096	\$0.096	\$0.096	\$0.096	\$0.096
T88	Study and Development	STATE	PLS	Various	Various	\$0.321	\$0.321	\$0.321	\$0.321	\$0.321	\$0.321	\$0.321	\$0.321	\$0.321	\$0.321
T500	Technology Improvements	STATE	EC	Various	Various	\$1.404	\$0.879	\$1.019	\$0.879	\$0.879	\$0.879	\$0.879	\$0.879	\$0.879	\$0.879
T42	Track Program	STATE	ERC	Various	Various	\$0.223	\$0.223	\$0.223	\$0.223	\$0.223	\$0.223	\$0.223	\$0.223	\$0.223	\$0.223
T210	Transit Enhancements/Transp Altern Prog (TAP)/Altern Transit Improv (ATI)	SECT 5307	ERC	Various	Various	\$0.668	\$1.251	\$1.686	\$0.586	\$1.686	\$0.785	\$0.785	\$1.616	\$1.616	\$1.616
		SECT 5337	ERC	Various	Various	\$0.423	\$0.423	\$0.423	\$0.423	\$0.423	\$0.423	\$0.423	\$0.423	\$0.423	\$0.423
		SECT 5339	ERC	Various	Various	\$0.215		\$1.099	\$0.215	\$0.215	\$0.215	\$0.215	\$0.215	\$0.215	\$0.215
		STP-TE	ERC	Various	Various	\$0.070	\$0.070	\$0.070	\$0.070	\$0.070	\$0.070	\$0.070	\$0.070	\$0.070	\$0.070
T300	Transit Rail Initiatives	STATE	ERC	Various	Various	\$0.018	\$0.018	\$0.018	\$0.018	\$0.018	\$0.018	\$0.018	\$0.018	\$0.018	\$0.018

## NJDOT Statewide Projects and Programs

DBNUM	Project Name	FUND	PHASE	MUNICIPALITY	2020	2021	2022	2023	2024	2025	2026	2027	2028	2029
X12	Acquisition of Right of Way	STATE	ROW	Various	\$0.500	\$0.500	\$0.500	\$0.500	\$0.500	\$0.500	\$0.500	\$0.500	\$0.500	\$0.500
13303	Active Traffic Management System (ATMS)	CMAQ	ERC	Various	\$3.000	\$1.000								
11344	ADA Curb Ramp Implementation	STATE	ERC	Various	\$2.000	\$2.000	\$2.000	\$2.000	\$2.000	\$2.000	\$2.000	\$2.000	\$2.000	\$2.000
		STBGP-FLEX	ERC	Various	\$1.000	\$1.000	\$1.000	\$1.000	\$1.000	\$1.000	\$1.000	\$1.000	\$1.000	\$1.000
19315	Aeronautics UAS Program	STATE	ERC	Various	\$0.500	\$0.500	\$0.500	\$0.500	\$0.500	\$0.500	\$0.500	\$0.500	\$0.500	\$0.500
08415	Airport Improvement Program	STATE	ERC	Various	\$4.000	\$4.000	\$4.000	\$4.000	\$4.000	\$4.000	\$4.000	\$4.000	\$4.000	\$4.000
01335	Betterments, Dams	STBGP-FLEX	EC	Various	\$0.300	\$0.100	\$0.300	\$0.100	\$0.300	\$0.100	\$0.300	\$0.100	\$0.300	\$0.100
X72B	Betterments, Roadway Preservation	STATE	EC	Various	\$20.000	\$18.000	\$20.000	\$20.000	\$20.000	\$20.000	\$20.000	\$20.000	\$20.000	\$20.000
X72C	Betterments, Safety	STATE	EC	Various	\$16.000	\$16.000	\$16.000	\$16.000	\$16.000	\$16.000	\$16.000	\$16.000	\$16.000	\$16.000
X185	Bicycle & Pedestrian Facilities/Accommodations	CMAQ	ERC	Various	\$1.500	\$1.500	\$1.500	\$1.500	\$1.500	\$1.500	\$1.500	\$1.500	\$1.500	\$1.500
		STATE	ERC	Various	\$4.000	\$1.000	\$1.000	\$1.000	\$1.000	\$1.000	\$1.000	\$1.000	\$1.000	\$1.000
		TA-FLEX	ERC	Various	\$1.500	\$1.500	\$1.500	\$1.500	\$1.500	\$1.500	\$1.500	\$1.500	\$1.500	\$1.500
X07F	Bridge and Structure Inspection, Miscellaneous	STATE	EC	Various	\$0.300	\$0.200	\$0.450	\$0.100	\$0.400	\$0.250	\$0.450	\$0.150	\$0.400	\$0.250
03304	Bridge Deck/Superstructure Replacement Program	NHPP	ERC	Various	\$4.000	\$4.000	\$4.000	\$4.000	\$4.000	\$4.000	\$4.000	\$4.000	\$4.000	\$24.000
		STBGP-OS-BRDG	ERC	Various	\$1.000	\$1.000	\$1.000	\$1.000	\$1.000	\$5.000	\$5.544	\$5.497	\$5.497	\$5.497
98315	Bridge Emergency Repair	STATE	EC	Various	\$83.000	\$83.000	\$85.000	\$85.000	\$85.000	\$85.000	\$85.000	\$85.000	\$85.000	\$85.000
X07A	Bridge Inspection	NHPP	EC	Various	\$12.900	\$11.900	\$11.900	\$11.900	\$11.900	\$11.900	\$11.900	\$11.900	\$11.900	\$11.900
		STBGP-FLEX	EC	Various	\$7.140	\$7.680	\$7.680	\$7.680	\$7.680	\$7.680	\$7.680	\$7.680	\$7.680	\$7.680
		STBGP-OS-BRDG	EC	Various	\$2.000	\$2.000	\$2.000	\$2.000	\$2.000	\$2.000	\$2.000	\$2.000	\$2.000	\$2.000
17341	Bridge Inspection Program, Minor Bridges	STATE	EC	Statewide	\$8.800	\$6.900	\$6.900	\$6.900	\$6.900	\$6.900	\$6.900	\$6.900	\$6.900	\$7.000
14404	Bridge Maintenance and Repair, Movable Bridges	STATE	EC	Various	\$28.500	\$28.500	\$28.500	\$28.500	\$28.500	\$28.500	\$28.500	\$28.500	\$28.500	\$28.500
17357	Bridge Maintenance Fender Replacement	NHPP	ERC	Various	\$14.000	\$14.000	\$14.000	\$14.000	\$14.000	\$14.000	\$14.000	\$14.000	\$14.000	\$14.000
		STBGP-FLEX	ERC	Various	\$4.000	\$4.000	\$4.000	\$4.000	\$4.000	\$4.000	\$4.000	\$4.000	\$4.000	\$4.000
17358	Bridge Maintenance Scour Countermeasures	NHPP	ERC	Various	\$5.000	\$5.000	\$5.000	\$5.000	\$5.000	\$5.000	\$5.000	\$5.000	\$5.000	\$5.000
		STBGP-FLEX	ERC	Various	\$4.000	\$4.000	\$4.000	\$4.000	\$4.000	\$4.000	\$4.000	\$4.000	\$4.000	\$4.000
X70	Bridge Management System	STBGP-FLEX	EC	Various	\$1.250	\$1.250	\$1.250	\$1.250	\$1.250	\$1.250	\$1.250	\$1.250	\$1.250	\$1.250

## South Jersey Transportation Planning Organization

DBNUM	Project Name	FUND	PHASE	MUNICIPALITY	2020	2021	2022	2023	2024	2025	2026	2027	2028	2029
13323	Bridge Preventive Maintenance	NHPP	EC	Various	\$25.000	\$25.000	\$25.000	\$25.000	\$25.000	\$25.000	\$25.000	\$25.000	\$25.000	\$25.000
		STATE	EC	Various	\$40.000	\$40.000	\$40.000	\$40.000	\$40.000	\$40.000	\$40.000	\$40.000	\$40.000	\$40.000
		STBGP-FLEX	EC	Various	\$10.000	\$10.000	\$10.000	\$10.000	\$10.000	\$10.000	\$10.000	\$10.000	\$10.000	\$10.000
08381	Bridge Replacement, Future Projects	NHPP	ERC	Various	\$1.001	\$10.828	\$21.288	\$15.350	\$8.419	\$14.426	\$51.271	\$23.689	\$116.100	\$93.520
		STATE	ERC	Various	\$1.326	\$2.634	\$6.396	\$21.111	\$26.791	\$25.836	\$26.007	\$24.995	\$31.149	\$86.000
98316	Bridge Scour Countermeasures	STATE	ERC	Various	\$0.200	\$0.200	\$0.200	\$0.200	\$0.200	\$0.200	\$0.200	\$0.200	\$0.200	\$0.200
02379	Congestion Relief, Intelligent Transportation System Improvements (Smart Move Program)	STATE	ERC	Various	\$2.000	\$2.000	\$2.000	\$2.000	\$2.000	\$2.000	\$2.000	\$2.000	\$2.000	\$2.000
X180	Construction Inspection	STATE	EC	Various	\$11.000	\$11.000	\$11.000	\$11.000	\$11.000	\$11.000	\$11.000	\$11.000	\$11.000	\$11.000
05304	Construction Program IT System (TRNS.PORT)	STATE	EC	Various	\$1.300	\$1.600	\$1.900	\$2.200	\$2.500	\$3.800	\$3.800	\$3.800	\$3.800	\$3.800
09316	Culvert Replacement Program	STATE	ERC	Various	\$4.000	\$4.000	\$4.000	\$4.000	\$4.000	\$4.000	\$4.000	\$4.000	\$4.000	\$4.000
		STBGP-FLEX	ERC	Various	\$1.000	\$1.000	\$1.000	\$1.000	\$2.000	\$2.000	\$2.000	\$2.000	\$2.000	\$2.000
X142	DBE Supportive Services Program	STBGP-FLEX	EC	Various	\$0.500	\$0.500	\$0.500	\$0.500	\$0.500	\$0.500	\$0.500	\$0.500	\$0.500	\$0.500
15322	Delaware & Raritan Canal Bridges	STBGP-FLEX	ERC	Various	\$8.350	\$5.000	\$5.000	\$10.000	\$10.000	\$10.000	\$10.000			
X106	Design, Emerging Projects	STATE	DES	Various	\$17.000	\$16.000	\$17.000	\$17.000	\$17.000	\$17.000	\$17.000	\$17.000	\$17.000	\$17.000
		STBGP-FLEX	DES	Various	\$1.000	\$1.000	\$1.000	\$1.000	\$1.000	\$1.000	\$1.000	\$1.000	\$1.000	\$1.000
05342	Design, Geotechnical Engineering Tasks	STATE	DES	Various	\$0.500		\$0.500	\$0.500		\$0.500	\$0.500		\$0.500	\$0.500
X197	Disadvantaged Business Enterprise	STBGP-FLEX	EC	Various	\$0.100	\$0.100	\$0.100	\$0.100	\$0.100	\$0.100	\$0.100	\$0.100	\$0.100	\$1.000
X154D	Drainage Rehabilitation & Improvements	STBGP-FLEX	EC	Various	\$20.000	\$15.000	\$15.000	\$15.000	\$15.000	\$15.000	\$15.000	\$15.000	\$15.000	\$15.000
X154	Drainage Rehabilitation and Maintenance, State	STATE	EC	Various	\$15.000	\$15.000	\$15.000	\$15.000	\$15.000	\$15.000	\$15.000	\$15.000	\$15.000	\$15.000
X241	Electrical Facilities	STATE	EC	Various	\$7.000	\$7.000	\$7.000	\$7.000	\$7.000	\$7.000	\$7.000	\$7.000	\$7.000	\$7.000
04324	Electrical Load Center Replacement, Statewide	STATE	ERC	Various	\$5.000	\$5.300	\$5.620	\$5.960	\$6.310	\$6.690	\$7.100	\$7.520	\$7.970	\$7.970
17360	Emergency Management and Transportation Security Support	STATE	ERC	Various	\$1.500	\$1.500	\$1.500	\$1.500	\$1.500	\$1.500	\$1.500	\$1.500	\$1.500	\$1.500
X75	Environmental Investigations	STATE	EC	Various	\$7.500	\$6.000	\$7.500	\$7.500	\$7.500	\$7.500	\$7.500	\$7.500	\$7.500	\$7.500
03309	Environmental Project Support	STATE	ERC	Various	\$1.000	\$1.000	\$1.100	\$1.100	\$1.100	\$1.100	\$1.100	\$1.100	\$1.100	\$1.100
X15	Equipment (Vehicles, Construction, Safety)	STATE	EC	Various	\$25.000	\$24.000	\$25.000	\$25.000	\$25.000	\$25.000	\$25.000	\$25.000	\$25.000	\$25.000
X15A	Equipment, Snow and Ice Removal	STATE	EC	Various	\$5.000	\$5.000	\$5.000	\$5.000	\$5.000	\$5.000	\$5.000	\$5.000	\$5.000	\$5.000
00377	Ferry Program	FBP	ERC	Various	\$4.000	\$4.000	\$4.000	\$4.000	\$4.000	\$4.000	\$4.000	\$4.000	\$4.000	\$4.000
X201	Guiderail Upgrade	NHPP	EC	Various	\$1.000	\$1.000	\$1.000	\$1.000	\$1.000	\$1.000	\$1.000	\$1.000	\$1.000	\$1.000
		STATE	EC	Various	\$2.500	\$1.000	\$2.500	\$2.500	\$2.500	\$2.500	\$2.500	\$2.500	\$2.500	\$2.500
97008	High-Mast Light Poles	NHPP	ERC	Various	\$1.000	\$1.000	\$1.000	\$1.000	\$1.000	\$1.000	\$1.000	\$1.000	\$1.000	\$1.000
		STBGP-FLEX	ERC	Various	\$1.000	\$1.000	\$1.000	\$1.000	\$1.000	\$1.000	\$1.000	\$1.000	\$1.000	\$1.000
09388	Highway Safety Improvement Program Planning	HSIP	PLS	Various	\$4.000	\$4.000	\$4.000	\$4.000	\$4.000	\$4.000	\$4.000	\$4.000	\$4.000	\$4.000
15343	Intelligent Traffic Signal Systems	CMAQ	ERC	Various	\$15.000	\$10.000	\$10.000	\$15.000	\$15.000	\$15.000	\$15.000	\$15.000	\$15.000	\$15.000
13304	Intelligent Transportation System Resource Center	STBGP-FLEX	EC	Various	\$4.000	\$4.000	\$4.000	\$4.000	\$4.000	\$4.000	\$4.000	\$4.000	\$4.000	\$4.000
X151	Interstate Service Facilities	STATE	EC	Various	\$0.525	\$0.552	\$0.580	\$0.610	\$0.640	\$0.675	\$0.705	\$0.740	\$0.776	\$0.815
13305	Job Order Contracting Infrastructure Repairs, Statewide	STBGP-FLEX	EC	Various	\$10.000	\$10.000	\$10.000	\$10.000	\$10.000	\$10.000	\$10.000	\$10.000	\$10.000	\$10.000
X137	Legal Costs for Right of Way Condemnation	STATE	EC	Various	\$1.600	\$1.600	\$1.600	\$1.600	\$1.600	\$1.600	\$1.600	\$1.600	\$1.600	
06327	Local Aid Grant Management System	STATE	EC	Various	\$0.200	\$0.200	\$0.100	\$0.100	\$0.100	\$0.100	\$0.100	\$0.100	\$0.100	\$0.100
X186	Local Aid, Infrastructure Fund	STATE	ERC	Various	\$7.500	\$7.500	\$7.500	\$7.500	\$7.500	\$7.500	\$7.500	\$7.500	\$7.500	\$7.500
X186B	Local Aid, State Transportation Infrastructure Bank	STATE	ERC	Various	\$22.600	\$22.600	\$22.600	\$22.600	\$22.600	\$20.500	\$20.500	\$20.500	\$20.500	\$20.500
08387	Local Bridges, Future Needs	STATE	ERC	Various	\$47.300	\$47.300	\$47.300	\$47.300	\$47.300	\$44.000	\$44.000	\$44.000	\$44.000	\$44.000

## South Jersey Transportation Planning Organization

DBNUM	Project Name	FUND	PHASE	MUNICIPALITY	2020	2021	2022	2023	2024	2025	2026	2027	2028	2029
17390	Local Freight Impact Fund	STATE	ERC	Various	\$30.100	\$30.100	\$30.100	\$30.100	\$30.100	\$28.000	\$28.000	\$28.000	\$28.000	\$28.000
X98Z	Local Municipal Aid, Urban Aid	STATE	ERC	Various	\$10.000	\$10.000	\$10.000	\$10.000	\$10.000	\$10.000	\$10.000	\$10.000	\$10.000	\$10.000
X196	Maintenance & Fleet Management System	STATE	EC	Various	\$1.000	\$1.000	\$1.000	\$1.000	\$1.000	\$1.000	\$1.000	\$1.000	\$1.000	\$1.000
01309	Maritime Transportation System	STATE	EC	Various	\$15.000	\$15.000	\$15.000	\$15.000	\$15.000	\$15.000	\$15.000	\$15.000	\$15.000	\$15.000
07332	Minority and Women Workforce Training Set Aside	STATE	EC	Various	\$1.000	\$1.000	\$1.000	\$1.000	\$1.000	\$1.000	\$1.000	\$1.000	\$1.000	\$1.000
13306	Mobility and Systems Engineering Program	NHPP	EC	Various	\$10.000	\$8.000	\$8.000	\$8.000	\$8.000	\$8.000	\$8.000	\$8.000	\$8.000	\$8.000
		STATE	EC	Various	\$1.500	\$1.500	\$1.500	\$1.500	\$1.500	\$1.500	\$1.500	\$1.500	\$1.500	\$1.500
		STBGP-FLEX	EC	Various	\$1.500	\$1.500	\$1.500	\$1.500	\$1.500	\$1.500	\$1.500	\$1.500	\$1.500	\$1.500
X233	Motor Vehicle Crash Record Processing	HSIP	EC	Various	\$2.500	\$2.500	\$2.500	\$2.500	\$2.500	\$2.500	\$2.500	\$2.500	\$2.500	\$2.500
X34	New Jersey Rail Freight Assistance Program	STATE	EC	Various	\$25.000	\$25.000	\$25.000	\$25.000	\$25.000	\$25.000	\$25.000	\$25.000	\$25.000	\$25.000
X200C	New Jersey Scenic Byways Program	TA-FLEX	ERC	Various	\$0.500	\$0.500	\$0.500	\$0.500	\$0.500	\$0.500	\$0.500	\$0.500	\$0.500	\$0.500
99372	Orphan Bridge Reconstruction	STATE	EC	Various	\$4.000	\$4.000	\$4.000	\$4.000	\$4.000	\$4.000	\$4.000	\$4.000	\$4.000	\$4.000
X28B	Park and Ride/Transportation Demand Management Program	STATE	EC	Various	\$1.000	\$1.000	\$1.000	\$1.000	\$1.000	\$1.000	\$1.000	\$1.000	\$1.000	\$1.000
X29	Physical Plant	STATE	ERC	Various	\$10.000	\$24.000	\$25.000	\$25.000	\$25.000	\$25.000	\$25.000	\$25.000	\$25.000	\$25.000
X30	Planning and Research, Federal-Aid	LTAP	PLS	Various	\$0.150	\$0.150	\$0.150	\$0.150	\$0.150	\$0.150	\$0.150	\$0.150	\$0.150	\$0.150
		SPR	PLS	Various	\$22.509	\$22.509	\$22.509	\$22.509	\$22.509	\$22.509	\$22.509	\$22.509	\$22.509	\$22.509
		STBGP-FLEX	PLS	Various	\$18.300	\$18.913	\$19.226	\$19.289	\$19.352	\$19.415	\$19.478	\$19.541	\$19.604	\$19.667
X140	Planning and Research, State	STATE	PLS	Various	\$1.000	\$1.000	\$1.000	\$1.000	\$1.000	\$1.000	\$1.000	\$1.000	\$1.000	\$1.000
X135	Pre-Apprenticeship Training Program for Minorities and Women	STBGP-FLEX	EC	Various	\$0.500	\$0.500	\$0.500	\$0.500	\$0.500	\$0.500	\$0.500	\$0.500	\$0.500	\$0.500
X10	Program Implementation Costs, NJDOT	STATE	EC	Various	\$104.040	\$104.210	\$108.240	\$110.410	\$112.620	\$114.870	\$117.170	\$119.510	\$121.900	\$124.340
10344	Project Development: Concept Development and Preliminary Engineering	STATE	CD	Various	\$5.000	\$4.000	\$5.000	\$5.000	\$5.000	\$5.000	\$5.000	\$5.000	\$5.000	\$5.000
05341	Project Management & Reporting System (PMRS)	STATE	DES	Various	\$2.380	\$1.130	\$1.130	\$1.130						
17337	Project Management Improvement Initiative Support	STATE	DES	Various	\$2.500	\$2.500	\$1.300	\$1.300						
X35A1	Rail-Highway Grade Crossing Program, Federal	RHC-B5K200K	EC	Various	\$1.715									
		RHC-FLEX	EC	Various	\$11.998	\$11.998	\$3.999							
		RHC-L5K	EC	Various	\$2.099									
X35A	Rail-Highway Grade Crossing Program, State	STATE	CON	Various	\$1.000	\$1.000	\$1.000	\$5.000	\$5.000	\$5.000	\$5.000	\$5.000	\$5.000	\$5.000
99409	Recreational Trails Program	TA-RTP	ERC	Various	\$1.227	\$1.227	\$1.227	\$1.227	\$1.227	\$1.227	\$1.227	\$1.227	\$1.227	\$1.227
X144	Regional Action Program	STATE	EC	Various	\$2.000	\$2.000	\$2.000	\$2.000	\$2.000	\$2.000	\$2.000	\$2.000	\$2.000	\$2.000
X03A	Restriping Program & Line Reflectivity Management System	STBGP-FLEX	EC	Various	\$20.000	\$17.000	\$17.000	\$17.000	\$17.000	\$17.000	\$17.000	\$17.000	\$17.000	\$17.000
X03E	Resurfacing Program	STATE	EC	Various	\$100.000	\$100.000	\$100.000	\$100.000	\$100.000	\$100.000	\$100.000	\$100.000	\$100.000	\$100.000
99327A	Resurfacing, Federal	NHPP	ERC	Various	\$1.000	\$1.000	\$1.000	\$1.000	\$1.000	\$1.000	\$1.000	\$10.000	\$10.000	\$10.000
05339	Right of Way Database/Document Management System	STATE	EC	Various	\$0.300	\$0.300	\$0.300	\$0.300	\$0.300	\$0.300	\$0.300	\$0.300	\$0.300	\$0.300
05340	Right of Way Full-Service Consultant Term Agreements	STATE	ROW	Various	\$0.050	\$0.050	\$0.050	\$0.050	\$0.050	\$0.050	\$0.050	\$0.050	\$0.050	\$0.050
		STBGP-FLEX	ROW	Various	\$0.300	\$0.300	\$0.300	\$0.300	\$0.300	\$0.300	\$0.300	\$0.300	\$0.300	\$0.300
X152	Rockfall Mitigation	NHPP	ERC	Various	\$16.000	\$14.000	\$6.000	\$7.000	\$3.000	\$7.000				\$13.000
99358	Safe Routes to School Program	TA-FLEX	ERC	Various	\$5.587	\$5.587	\$5.587	\$5.587	\$5.587	\$5.587	\$5.587	\$5.587	\$5.587	\$5.587
06402	Safe Streets to Transit Program	STATE	EC	Various	\$1.000	\$1.000	\$1.000	\$1.000	\$1.000	\$1.000	\$1.000	\$1.000	\$1.000	\$1.000



## South Jersey Transportation Planning Organization

DBNUM	Project Name	FUND	PHASE	MUNICIPALITY	2020	2021	2022	2023	2024	2025	2026	2027	2028	2029
19370	Safety Programs	HSIP	ERC	Various	\$14.000	\$14.000	\$14.000	\$14.000	\$14.000	\$14.000	\$14.000	\$14.000	\$14.000	\$14.000
		STATE	ERC	Various	\$0.250	\$0.250	\$0.250	\$0.250	\$0.250	\$0.250	\$0.250	\$0.250	\$0.250	\$0.250
13307	Salt Storage Facilities - Statewide	STATE	ERC	Various	\$3.000	\$3.000	\$3.000	\$3.000	\$3.000	\$3.000				
X239	Sign Structure Inspection Program	STBGP-FLEX	EC	Various	\$2.100	\$2.100	\$2.100	\$2.100	\$2.100	\$2.100	\$2.100	\$2.100	\$2.100	\$2.100
X239A	Sign Structure Rehabilitation/Replacement Program	STBGP-FLEX	ERC	Various	\$1.000	\$1.000	\$1.000	\$1.000	\$1.000	\$1.000	\$1.000	\$1.000	\$1.000	\$1.000
15335	Sign Structure Replacement Contract 2016-3	NHPP	CON	Various	\$6.800									
X39	Signs Program, Statewide	STATE	EC	Various	\$3.150	\$3.310	\$3.470	\$3.650	\$3.830	\$4.020	\$4.220	\$4.430	\$4.650	\$4.650
19600	Smart and Connect Corridors Program	STATE	CON	Various			\$5.365							
		STATE	DES	Various	\$2.150									
X160	Solid and Hazardous Waste Cleanup, Reduction and Disposal	STATE	EC	Various	\$1.330	\$1.330	\$1.330	\$1.330	\$1.330	\$1.330	\$1.330	\$1.330	\$1.330	\$1.330
X10A	Staff Augmentation	STATE	EC	Various	\$15.000	\$8.000	\$5.000	\$3.000						
X150	State Police Enforcement and Safety Services	STATE	EC	Various	\$5.000	\$5.000	\$5.000	\$6.000	\$6.000	\$6.000	\$6.000	\$6.000	\$6.000	\$6.000
13308	Statewide Traffic Operations and Support Program	NHPP	EC	Various	\$20.000	\$18.000	\$18.000	\$18.000	\$18.000	\$18.000	\$18.000	\$18.000	\$18.000	\$18.000
17353	Storm Water Asset Management	STBGP-FLEX	ERC	Various	\$5.000	\$2.000	\$2.000	\$4.000	\$4.000	\$4.000	\$4.000	\$4.000	\$4.000	\$4.000
14300	Title VI and Nondiscrimination Supporting Activities	STATE	EC	Various	\$0.175	\$0.175	\$0.175	\$0.175	\$0.175	\$0.175	\$0.175	\$0.175	\$0.175	\$0.175
X66	Traffic Monitoring Systems	NHPP	EC	Various					\$2.000					
		NHPP	PLS	Various	\$12.000	\$12.000	\$12.000	\$12.000	\$12.000	\$12.000	\$12.000	\$12.000	\$12.000	\$12.000
		STATE	EC	Various	\$1.490	\$1.490	\$1.490	\$1.490	\$1.490	\$1.490	\$1.490	\$1.490	\$1.490	\$1.490
X47	Traffic Signal Replacement	STATE	EC	Various	\$9.000	\$9.000	\$9.000	\$9.000	\$9.000	\$9.000	\$9.000	\$9.000	\$9.000	\$9.000
X244	Training and Employee Development	STBGP-FLEX	EC	Various	\$2.000	\$2.000	\$2.000	\$2.000	\$2.000	\$2.000	\$2.000	\$2.000	\$2.000	\$2.000
01316	Transit Village Program	STATE	EC	Various	\$1.000	\$1.000	\$1.000	\$1.000	\$1.000	\$1.000	\$1.000	\$1.000	\$1.000	\$1.000
X107	Transportation Alternatives Program	TA-B5K200K	ERC	Various	\$0.396	\$0.398	\$0.401	\$0.403	\$0.406	\$0.409	\$0.411	\$0.414	\$0.416	\$0.419
		TA-FLEX	ERC	Various	\$1.081	\$1.137	\$1.193	\$1.249	\$1.305	\$1.362	\$1.420	\$1.477	\$1.535	\$1.593
		TA-L5K	ERC	Various	\$0.484	\$0.488	\$0.491	\$0.494	\$0.497	\$0.500	\$0.503	\$0.507	\$0.510	\$0.513
X43	Transportation Demand Management Program Support	CMAQ	PLS	Various	\$0.250	\$0.250	\$0.250	\$0.250	\$0.250	\$0.250	\$0.250	\$0.250	\$0.250	\$0.250
X126	Transportation Research Technology	STATE	EC	Various	\$0.900	\$1.000	\$1.100	\$1.200	\$1.700	\$2.200	\$2.200	\$2.200	\$2.200	\$2.200
18379	UHPC Overlay Research Project (8 Bridge Decks)	STATE	CON	Various	\$8.500									
X11	Unanticipated Design, Right of Way and Construction Expenses, State	STATE	ERC	Various	\$35.290	\$29.970	\$44.750	\$37.860	\$36.060	\$55.060	\$55.060	\$55.060	\$71.560	\$89.380
15344	Utility Pole Mitigation	HSIP	EC	Various	\$0.175	\$0.175	\$0.175	\$0.175	\$0.175	\$0.175	\$0.175	\$0.175	\$0.175	\$0.175
X182	Utility Reconnaissance and Relocation	STATE	EC	Various	\$2.500	\$2.500	\$2.500	\$2.500	\$2.500	\$2.500	\$2.500	\$2.500	\$2.500	\$2.500
X199	Youth Employment and TRAC Programs	STBGP-FLEX	EC	Various	\$0.350	\$0.350	\$0.350	\$0.350	\$0.350	\$0.350	\$0.350	\$0.350	\$0.350	\$0.350

## Regional Projects and Programs

DBNUM	Project Name	SPONSOR	MUNICIPALITY	COUNTY	PHASE	FUND	2020	2021	2022	2023	2024	2025	2026	2027	2028	2029
15420	ADA South, Contract 1 w/o ROW	NJDOT	Somers Point City	Atlantic, Cape May	CON	STBGP-FLEX	\$3.850									
15420A	ADA South, Contract 1 with ROW	NJDOT	Galloway Twp	Atlantic, Burlington	CON	STBGP-FLEX			\$4.000							
					ROW	STBGP-FLEX		\$0.500								
16322	ADA South, Contract 5	NJDOT	Galloway Twp	Atlantic, Gloucester	CON	STBGP-FLEX			\$1.313							
S1913	Atlantic Avenue, Albany to California Avenues	Atlantic City	Atlantic City	Atlantic	CON	STBGP-AC			\$1.000							
S1914	Atlantic Avenue, Albany to Morris Avenues	Atlantic City	Atlantic City	Atlantic	DES	STBGP-AC		\$0.100								
S1915	Atlantic Avenue, Rhode Island to Maine Avenues	Atlantic City	Atlantic City	Atlantic	DES	STBGP-AC	\$0.100									
S1916	Atlantic Avenue, Tennessee to Maine Avenues	Atlantic City	Atlantic City	Atlantic	CON	STBGP-AC		\$0.864								
S1702	Baltic Avenue, Maine to Missouri Avenues	Atlantic City	Atlantic City	Atlantic	CON	STBGP-AC				\$1.000						
					DES	STBGP-AC				\$0.100						
S9911	Beach Avenue (CR 604)	Cape May County	Cape May City	Cape May	CON	STBGP-B5K200K			\$1.785							
03304	Bridge Deck/Superstructure Replacement Program	NJDOT	Various	Various	ERC	NHPP	\$1.000	\$1.000	\$1.000	\$1.000	\$1.000	\$1.000	\$1.000	\$1.000	\$1.000	\$15.100
S1912	Brigantine Avenue (CR 638), 2nd Street South to Terminus	Atlantic County	Brigantine City	Atlantic	CON	STBGP-AC				\$1.600						
S1911	Brigantine Avenue (CR 638), 29th Street South to 2nd Street South	Atlantic County	Brigantine City	Atlantic	CON	STBGP-AC			\$2.900							
S1703	Chelsea Section, Albany Avenue	Atlantic City	Atlantic City	Atlantic	CON	STBGP-AC	\$1.000									
S1706	CR 559 Alternate (Ocean Heights Avenue), Harbor Ave to Salma Terrace	Atlantic County	Egg Harbor Twp	Atlantic	CON	STBGP-AC		\$1.571								
S1708	CR 563 (Tilton Road), Coolidge Avenue to Delilah Road	Atlantic County	Egg Harbor Twp	Atlantic	CON	STBGP-AC	\$2.300									
S1403	Cumberland County Federal Road Program	Cumberland County	Various	Cumberland	CON	STBGP-B5K200K	\$2.100	\$2.100	\$2.200	\$2.200						
S1903	Griffith Street/Grant Street (CR 657)	Salem County	Salem City	Salem	CON	STBGP-B5K200K				\$0.750						
					DES	STBGP-B5K200K			\$0.100							
S1906	Hook Road (CR 551), Phase 3	Salem County	Pennsville Twp	Salem	CON	STBGP-FLEX	\$1.500									
S1917	Kentucky/New York Avenues, Absecon Boulevard to Baltic Avenue	Atlantic City	Atlantic City	Atlantic	CON	STBGP-AC				\$1.000						
					DES	STBGP-AC			\$0.100							
S1713	Landis Avenue, Mill Road to Rt 55	Vineland City	Vineland City	Cumberland	CON	STBGP-B5K200K	\$1.295									
S1901	Landis Avenue, Phase 0, Main Road to Myrtle Street	Vineland City	Vineland City	Cumberland	CON	STBGP-B5K200K		\$1.800								
					DES	STBGP-B5K200K	\$0.100									
10347	Local Aid Consultant Services	NJDOT	Various	Various	EC	STBGP-B5K200K		\$0.100		\$0.100		\$0.100		\$0.100		\$0.100
X065	Local CMAQ Initiatives	Local Lead	Various	Various	EC	CMAQ	\$1.900	\$1.900	\$1.900	\$1.900	\$1.900	\$1.900	\$1.900	\$1.900	\$1.900	\$1.900

## South Jersey Transportation Planning Organization

DBNUM	Project Name	SPONSOR	MUNICIPALITY	COUNTY	PHASE	FUND	2020	2021	2022	2023	2024	2025	2026	2027	2028	2029
06326	Local Concept Development Support	NJDOT	Various	Various	PLS	STBGP-B5K200K	\$0.275	\$0.275	\$0.275	\$0.275	\$0.275	\$0.275	\$0.275	\$0.275	\$0.275	\$0.275
X41A1	Local County Aid, SJTPO	Local Lead	Various	Various	ERC	STATE	\$23.079	\$23.079	\$23.079	\$23.079	\$23.079	\$21.620	\$21.620	\$21.620	\$21.620	\$21.620
X98A1	Local Municipal Aid, SJTPO	Local Lead	Various	Various	ERC	STATE	\$13.558	\$13.558	\$13.558	\$13.558	\$13.558	\$12.550	\$12.550	\$12.550	\$12.550	\$12.550
04314	Local Safety/ High Risk Rural Roads Program	Local Lead	Various	Various	ERC	HSIP	\$2.000	\$2.000	\$2.000	\$2.000	\$2.000	\$2.000	\$2.000	\$2.000	\$2.000	\$2.000
X30A	Metropolitan Planning	MPO	Various	Various	PLS	PL	\$1.069	\$1.069	\$1.069	\$1.069	\$1.069	\$1.069	\$1.069	\$1.069	\$1.069	\$1.069
					PLS	PL-FTA	\$0.462	\$0.462	\$0.462	\$0.462	\$0.462	\$0.462	\$0.462	\$0.462	\$0.462	\$0.462
					PLS	STBGP-AC	\$0.265		\$0.265		\$0.265		\$0.265		\$0.265	
					PLS	STBGP-L5K		\$0.265		\$0.265		\$0.265		\$0.265		\$0.265
S1714	Mill Road, Landis Avenue to CR 540 (Almond Road)	Vineland City	Vineland City	Cumberland	CON	STBGP-B5K200K				\$1.640						
					DES	STBGP-B5K200K		\$0.100								
S1710	Ocean Drive (CR 619), 62nd Street to 80th Street	Cape May County	Avalon Boro	Cape May	CON	STBGP-AC		\$1.676								
S1711	Pacific Avenue (CR 621), Fish Dock Road to Rambler Road	Cape May County	Lower Twp	Cape May	CON	STBGP-B5K200K	\$2.148									
S1716	Park Avenue, NW Boulevard to West Avenue	Vineland City	Vineland City	Cumberland	CON	STBGP-B5K200K				\$2.065						
S1902	Park Avenue/Quigley Avenue (CR 540)	Vineland City	Vineland City	Cumberland	CON	STBGP-B5K200K			\$2.200							
X51	Pavement Preservation	NJDOT	Various	Various	EC	NHPP	\$4.000	\$4.000	\$4.000	\$4.000	\$4.000	\$4.000	\$4.000	\$4.000	\$4.000	\$4.000
					EC	STBGP-FLEX	\$1.000	\$1.000	\$1.000	\$1.000	\$1.000	\$1.000	\$1.000	\$1.000	\$1.000	\$1.000
S1904	Perkintown Road (CR 644)	Salem County	Oldsmans Twp	Salem	CON	STBGP-L5K					\$1.500					
					DES	STBGP-L5K				\$0.150						
X35A1	Rail-Highway Grade Crossing Program, Federal	NJDOT	Various	Various	EC	RHC	\$0.288	\$0.295	\$0.302	\$0.309	\$0.317	\$0.325	\$0.333	\$0.341	\$0.349	\$0.358
99327A	Resurfacing, Federal	NJDOT	Various	Various	ERC	NHPP						\$2.000	\$2.000	\$11.000	\$11.000	\$11.000
15397	Route 9, Atkinson Avenue to Bayview Drive	NJDOT	Somers Point City	Atlantic	CON	NHPP		\$7.900								
15400	Route 9, Wrights Lane to Harbor Road	NJDOT	Upper Twp	Cape May	CON	NHPP		\$8.200								
11416	Route 30, Atco Avenue to Route 206	NJDOT	Waterford Twp	Camden, Atlantic	CON	NHPP	\$1.705									
14427	Route 30, Bridge over Beach Thorofare	NJDOT	Atlantic City	Atlantic	CON	NHPP	\$18.250									
14428	Route 30, Bridge over Duck Thorofare	NJDOT	Atlantic City	Atlantic	CON	NHPP						\$12.600				
					DES	NHPP				\$1.850						
					PE	NHPP	\$1.000									
					ROW	STATE			\$0.500							
16350	Route 30, Bridge over Newfound Thorofare	NJDOT	Atlantic City	Atlantic	CON	NHPP								\$23.321		
15382	Route 30, CR 542 (Sea Grove Ave/Central Ave) to Weymouth Rd (CR 640)	NJDOT	Hammonton Town	Atlantic	CON	NHPP			\$2.600							
17503	Route 30, Mill Road (CR 651)	NJDOT	Absecon City	Atlantic	CON	HSIP	\$1.400									
08371	Route 40, Atlantic County, Drainage	NJDOT	Egg Harbor Twp	Atlantic	CON	STBGP-FLEX		\$20.000								
12413	Route 40, Elmer Lake to Elmwood Avenue	NJDOT	Upper Pittsgrove Twp	Gloucester, Salem	CON	NHPP	\$4.862									
15370	Route 40, Hamilton Common Drive to West End Avenue (CR 629)	NJDOT	Hamilton Twp	Atlantic	CON	NHPP		\$13.340								



## South Jersey Transportation Planning Organization

DBNUM	Project Name	SPONSOR	MUNICIPALITY	COUNTY	PHASE	FUND	2020	2021	2022	2023	2024	2025	2026	2027	2028	2029
196A5	Route 40/322, Median Closures, Oakcrest Avenue to Spencer Avenue	NJDOT	Hamilton Twp	Atlantic	CON	NHPP						\$6.800				
					ROW	NHPP				\$1.000						
					DES	STATE		\$1.200								
17303	Route 47, Bridge over Dennis Creek	NJDOT	Dennis Twp	Cape May	CON	NHPP				\$4.350						
					ROW	NHPP		\$0.300								
16346	Route 47, Bridge over Menantico Creek	NJDOT	Maurice River Twp	Cumberland	CON	NHPP						\$15.850				
15340	Route 47, Henderson Avenue to High Street	City of Milville	Millville City	Cumberland	CON	HSIP								\$5.900		
					DES	HSIP				\$0.575						
					PE	HSIP	\$0.350									
					ROW	HSIP						\$1.500				
15314	Route 49, Bridge over Maurice River	NJDOT	Millville City	Cumberland	CON	NHPP				\$7.400						
17329	Route 50, Bridge over Cedar Swamp Creek	NJDOT	Upper Twp	Cape May	DES	STATE		\$2.500								
					PE	STATE	\$1.000									
					CON	STBGP-OS-BRDG			\$11.500							
11414	Route 130, Plant Street to High Hill Road (CR 662)	NJDOT	Logan Twp	Salem, Gloucester	CON	NHPP	\$10.000									
15448	Route 322, Bridge over Great Egg Harbor River	NJDOT	Hamilton Twp	Atlantic	DES	STATE		\$1.500								
					CON	STBGP-OS-BRDG						\$6.450				
					ROW	STBGP-OS-BRDG				\$0.250						
S044	SJTPO, Future Projects	SJTPO	Various	Various	EC	STBGP-AC	\$0.446									
					ERC	STBGP-AC			\$0.050	\$0.009	\$3.261	\$4.636	\$4.483	\$4.862	\$4.713	\$5.097
					ERC	STBGP-B5K200K					\$5.080	\$5.150	\$5.270	\$5.330	\$5.390	\$5.520
					ERC	STBGP-L5K					\$3.120	\$3.150	\$3.230	\$3.270	\$3.310	\$3.380
S1909	South Greenwich Street/Telegraph Road (CR 540), Phase 1	Salem	Alloway Twp	Salem	CON	STBGP-L5K		\$1.500								
					DES	STBGP-L5K	\$0.150									
09361	South Inlet Transportation Improvement Project	SJTA/CRDA	Atlantic City	Atlantic	CON	STATE	\$1.504	\$1.504	\$1.504	\$1.504	\$1.504	\$1.504	\$1.193			
S1908	Telegraph Road (CR 540), Phase 2	Salem	Quinton Twp	Salem	CON	STBGP-L5K			\$1.500							
					DES	STBGP-L5K		\$0.150								
S1910	Third Avenue (CR 619), 96th Street (CR 657) to 80th Street	Cape May County	Stone Harbor Boro	Cape May	CON	STBGP-AC				\$1.710						
X107	Transportation Alternatives Program	NJDOT	Various	Various	ERC	TA-AC	\$0.245	\$0.246	\$0.248	\$0.250	\$0.251	\$0.253	\$0.254	\$0.256	\$0.258	\$0.259
S9912	Welchville Road (CR 540)	Salem County	Alloway Twp	Salem County	CON	STBGP-L5K				\$0.750						
					DES	STBGP-L5K			\$0.100							

## Acronyms

<b>ADA</b>	Americans with Disabilities Act of 1990
<b>ATI</b>	Alternate Transit Improvements
<b>CAP</b>	Capital Acquisition
<b>CASINO REVENUE</b>	Annual allocation of the 8.5% of the Casino Revenue Fund appropriated for transportation services for senior citizen and disabled residents
<b>CD/LCD</b>	Concept Development
<b>CMAQ</b>	Congestion Mitigation and Air Quality
<b>CON</b>	Construction
<b>DBNUM</b>	Database Number
<b>DES</b>	Final Design
<b>DVRPC</b>	Delaware Valley Regional Planning Commission
<b>EC</b>	Design and Construction
<b>ERC</b>	Design, Right of Way, and Construction
<b>FBP</b>	Ferry Boat Program
<b>FFY</b>	Federal Fiscal Year (October 1 – September 30)
<b>FHWA</b>	Federal Highway Administration
<b>FTA</b>	Federal Transit Administration
<b>HSIP</b>	Highway Safety Improvement Program
<b>LTAP</b>	Local Technical Assistance Program
<b>MATCH</b>	Local funds to New Jersey Transit (NJ TRANSIT) needed to match federal funding (JARC and Section 5311)
<b>MOU</b>	Memorandum of Understanding
<b>MPO(s)</b>	Metropolitan Planning Organization(s)
<b>NAAQS</b>	National Ambient Air Quality Standards
<b>NEC</b>	Northeast Corridor
<b>NHPP</b>	National Highway Performance Program
<b>NJ TRANSIT</b>	New Jersey Transit
<b>NJDEP</b>	New Jersey Department of Environmental Protection
<b>NJDOT</b>	New Jersey Department of Transportation
<b>NJTPA</b>	North Jersey Transportation Planning Authority
<b>NOx</b>	Oxides of Nitrogen
<b>PL/PL-FTA</b>	Planning
<b>PLS</b>	Planning Study
<b>RHC</b>	Rail-Highway Grade Crossings Program
<b>RHC-B5K200K</b>	Rail-Highway Grade Crossings Program, for use in areas with populations between 5,000 and 200,000
<b>RHC-FLEX</b>	Rail-Highway Grade Crossings Program, flex funding, not allocated to a specific population area
<b>RHC-L5K</b>	Rail-Highway Grade Crossings Program, for use in areas with population less than 5,000
<b>ROW</b>	Right of Way

<b>RTP</b>	Regional Transportation Plan
<b>SECT 5307</b>	Section 5307, Federal Transit Administration Urbanized Area Formula Program, includes funding to New Jersey Transit (NJ TRANSIT) for Transportation Enhancements (SECT 5307-TE), Transportation Alternatives Program (SECT 5307-TAP), and Associated Transit Improvements (SECT 5307-ATI)
<b>SECT 5310</b>	Section 5310, provides formula funding to increase the mobility of seniors and persons with disabilities
<b>SECT 5311</b>	Section 5311, non-urbanized area formula program, federal funding provided for rural public transportation programs
<b>SECT 5337</b>	Section 5337, grant program dedicated to repairing and upgrading the nation's rail transit systems in a state of good repair, along with high-intensity motor bus systems that use high-occupancy vehicle lanes
<b>SECT 5339</b>	Section 5339, provides funding to replace, rehabilitate, and purchase buses and related equipment, and to construct bus-related facilities
<b>SIP</b>	State Implementation Plan
<b>SPR</b>	Statewide Planning and Research
<b>SRTS</b>	Safe Routes to School
<b>STATE</b>	The disposition of funding received from the New Jersey Transportation Trust Fund (TTF)
<b>STBGP</b>	Surface Transportation Block Grant Program
<b>STBGP-AC</b>	Surface Transportation Block Grant Program, for use in the Atlantic City Urbanized Area
<b>STBGP-B5K200K</b>	Surface Transportation Block Grant Program, for use in areas with populations between 5,000 and 200,000
<b>STBGP-FLEX</b>	Surface Transportation Block Grant Program, flex funding, not allocated to a specific population area
<b>STBGP-L5K</b>	Surface Transportation Block Grant Program, for use in areas with population less than 5,000
<b>STBGP-OS-BRDG</b>	Surface Transportation Block Grant Program, Off-system Bridge
<b>STIP</b>	Statewide Transportation Improvement Program
<b>STP-TE</b>	Surface Transportation Program-Transit Enhancements, program under the flexible funding for Transit and Highway Improvements
<b>SWI</b>	Statewide Investment
<b>TA-FLEX</b>	Transportation Alternatives, for use in areas with populations between 5,000 and 200,000
<b>TA-RTP</b>	Transportation Alternatives, funding specific to Recreational Trails Program
<b>TA/TAP</b>	Transportation Alternatives Program
<b>TIP</b>	Transportation Improvement Program
<b>TTF</b>	Transportation Trust Fund
<b>UAS</b>	Unmanned Aircraft Systems
<b>US EPA</b>	United States Environmental Protection Agency
<b>VOCs</b>	Volatile Organic Compounds