

SALEM COUNTY



DATA BOOK

JUNE, 2013

Salem County Planning Board

110 Fifth Street

Salem, NJ 08079

SALEM COUNTY, NEW JERSEY

- 2013 -

Board of Chosen Freeholders

Julie A. Acton, Director
Dale A. Cross, Deputy Director
Bruce L. Bobbitt
Benjamin H. Laury
Beth E. Timberman
Robert Vanderslice
Lee R. Ware

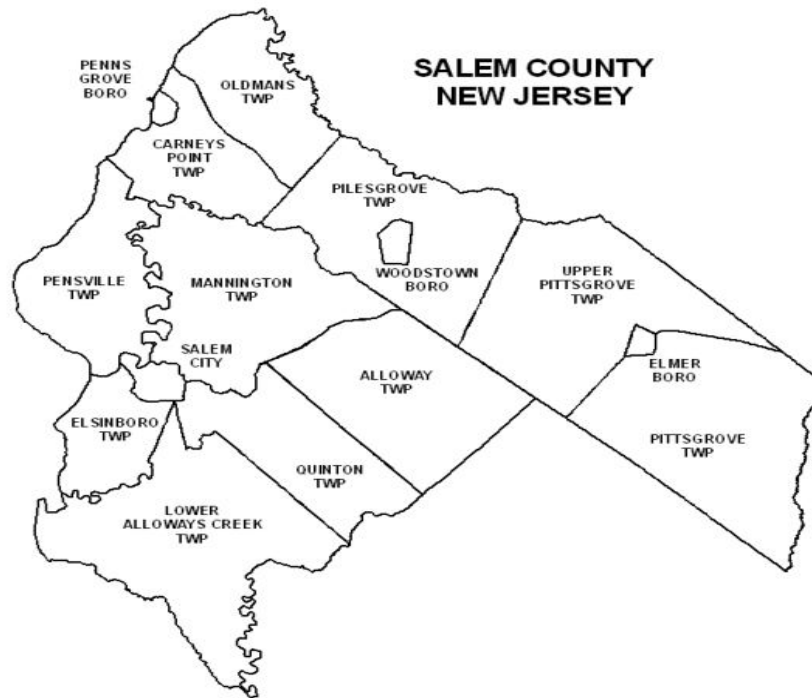
Salem County Planning Board

John Willadsen, Chairman
John Humphreys, II, Vice- Chair
Brian Demarest
Bill Stoms
Charles Tisa
Robert Widdifield
Julie A. Acton, Freeholder Director
Lee R. Ware, Freeholder
Dale A. Cross, Alt. Freeholder
Brent Rowand, Alt. 1
Guy Waddington, Alt. 2

James McKelvie, PE County Engineer
Matthew J. Goff, Secretary

Salem County Department of Planning and Agriculture

Louis C. Joyce, PP, AICP, Director of Planning
Matt Goff, Principal Planning Aide
Kris Alexander, Agriculture Program Coordinator



County Highlights

Land Area in Square Miles: 331.9
 Rank Among All N.J. Counties 10th

2010 Population: 66,083
 Rank Among All N.J. Counties 21st

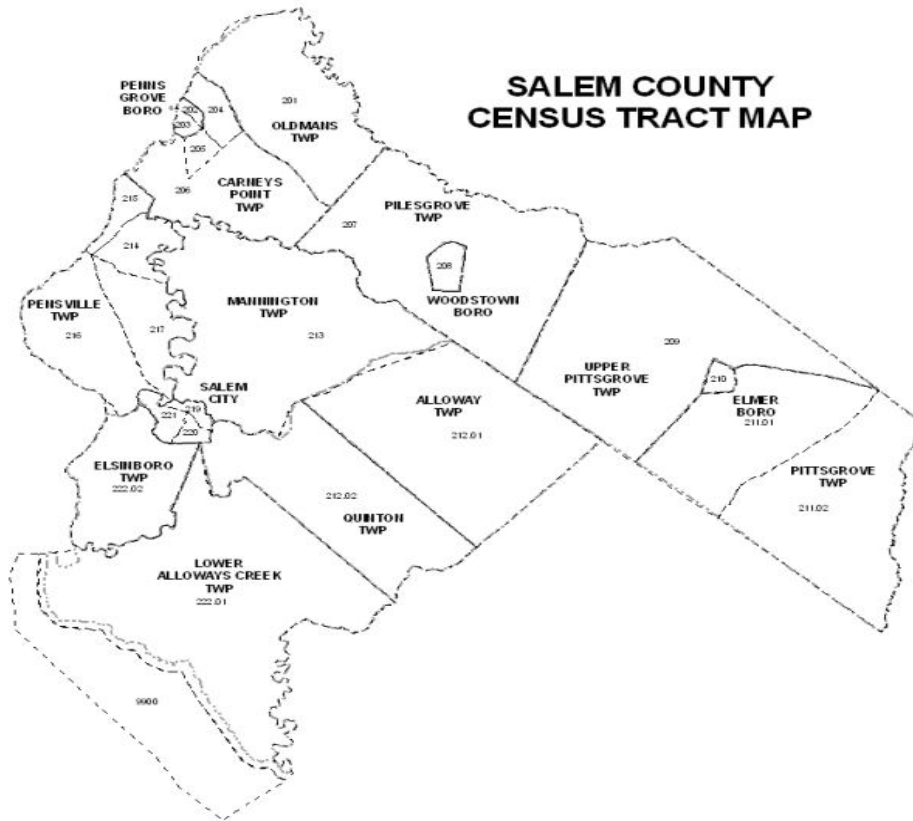
Per Capita Income 2010: \$27,296
 Rank Among All N.J. Counties 18th

County Seat: Salem City

Top Five Municipalities in Population 2010:

1. Pennsville Township 13,409
2. Pittsgrove Township 9,393
3. Carneys Point Township 8,049
4. Penns Grove Borough 5,147
5. Salem City 5,146

SALEM COUNTY CENSUS TRACT MAP



Key to Census Tracts

Alloway	212.01
Carneys Point	204, 205, 206
Elmer	210
Elsinboro	222.02
L.A.C.	222.01
Mannington	213
Oldmans	201
Penns Grove	202, 203
Pennsville	214 - 217
Pilesgrove	207
Pittsgrove	211
Quinton	212.02
Salem City	219, 220, 221
Upper Pittsgrove	209
Woodstown	210

SALEM COUNTY DATA BOOK

FOREWORD

The 2013 Data Book update was primarily prepared to assist the Salem County Planning Department in the continued updating of the County Master Plan. It is also used to create various reports issued throughout the year by the Planning Department staff. It is a valuable resource used by the various departments and agencies throughout the County. Additionally it provides County residents a detailed look at a multitude of County and municipal demographic statistics and trends in one convenient location.

The selected data contained within this book is an update of previous data books. This data represents the most requested data from departments and agencies outside of the Salem County Planning Department. Also we have taken into account data found in similar books prepared by other county planning departments throughout New Jersey.

The intent of the Salem County Planning Department is to provide the most current census data available by the various sources cited within this book. We would like this data to be readily available for all of the municipalities within Salem County to assist in planning, development and smart growth decision making.

The information provided in this Data Book was the most recent data available to the Salem County Planning Staff at the time of compilation or revision. The sources of the data have been cited on the pages. This issue was revised during June, 2013.

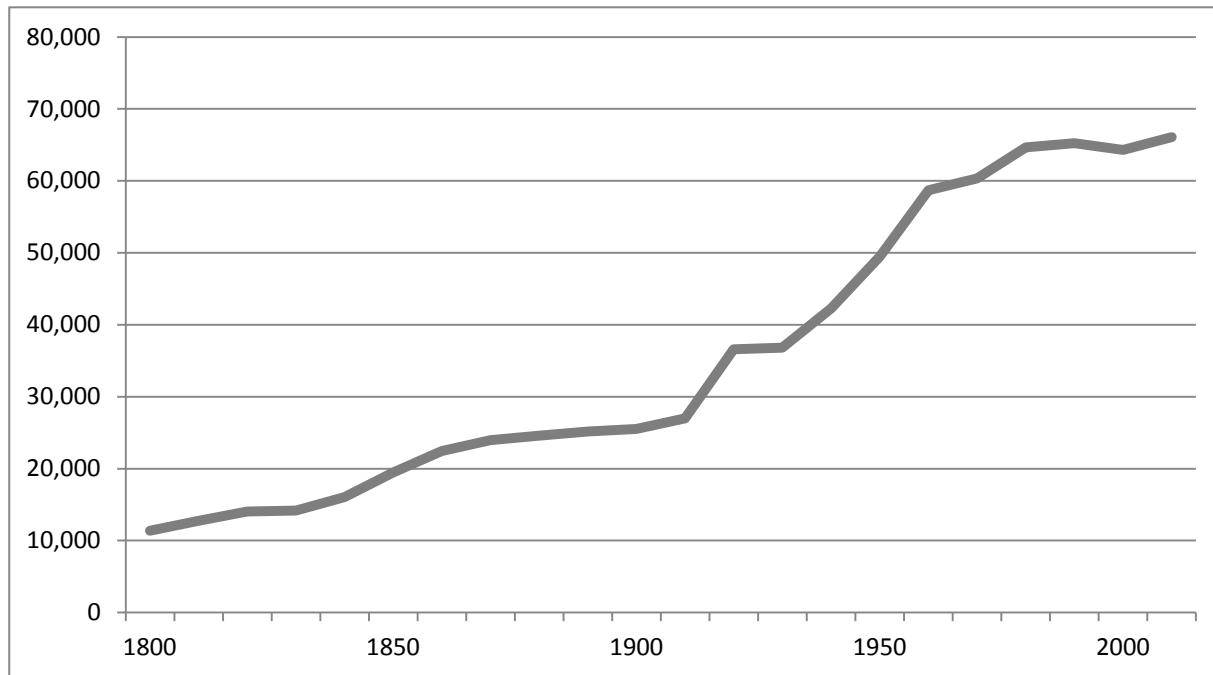
Table of Contents

	<i>Pages</i>
I. Population	1 to 16
II. Education	17 to 20
III. Income	21 to 23
IV. Employment	24 to 29
V. Journey to Work	30 to 33
VI. Housing	34 to 45
VII. Estimates	46 to 49

I. Population

Salem County Growth Trends: 1800 to 2010

<u>Year</u>	<u>Population</u>
1800	11,371
1810	12,761
1820	14,022
1830	14,155
1840	16,024
1850	19,467
1860	22,458
1870	23,940
1880	24,579
1890	25,151
1900	25,530
1910	26,999
1920	36,572
1930	36,834
1940	42,274
1950	49,508
1960	58,711
1970	60,346
1980	64,676
1990	65,249
2000	64,285
2010	66,083



Source: US Census

Salem County Municipal Population: 1910 to 2010

	1910	1920	1930	1940	1950	1960	1970	1980	1990	2000	2010
Alloway	1,533	1,431	1,575	1,705	1,792	2,226	2,550	2,680	2,795	2,774	3,467
Carneys Point	744	6,259	3,879	4,805	6,717	7,595	7,016	8,396	8,443	7,684	8,049
Elmer	1,167	1,115	1,219	1,344	1,460	1,505	1,592	1,569	1,571	1,384	1,395
Elsinboro	419	374	405	663	674	1,220	1,204	1,290	1,170	1,092	1,036
LAC	1,252	1,084	1,063	1,124	1,307	1,293	1,400	1,547	1,858	1,851	1,770
Mannington	1,606	1,456	1,584	1,656	1,686	2,024	1,913	1,740	1,693	1,559	1,806
Oldmans	1,364	1,328	1,431	1,722	1,657	2,913	2,088	1,847	1,683	1,798	1,773
Penns Grove	2,118	6,060	5,895	6,488	6,669	6,176	5,727	5,760	5,228	4,886	5,147
Pennsville	1,544	2,149	2,933	5,113	7,376	10,417	13,296	13,848	13,794	13,194	13,409
Piles Grove	1,786	1,770	1,815	1,614	1,942	2,519	2,706	2,810	3,250	3,923	4,016
Pittsgrove	2,394	1,842	2,091	2,157	2,808	3,785	4,618	6,954	8,121	8,893	9,393
Quinton	1,091	956	1,166	1,313	1,821	2,440	2,567	2,887	2,511	2,786	2,666
Salem City	6,614	7,435	8,047	8,610	9,050	8,941	7,648	6,959	6,883	5,857	5,146
Upper Pittsgrove	1,754	1,724	1,899	1,925	2,204	2,715	2,884	3,139	3,140	3,468	3,505
Woodstown	1,613	1,589	1,832	2,027	2,345	2,942	3,137	3,250	3,154	3,136	3,505
Salem County	26,999	36,572	36,834	42,266	49,508	58,711	60,346	64,676	65,294	64,285	66,083

NOTE: Lower Penns Neck Township became Pennsville Township in 1964
Upper Penns Neck Township became Carneys Point Township in 1975

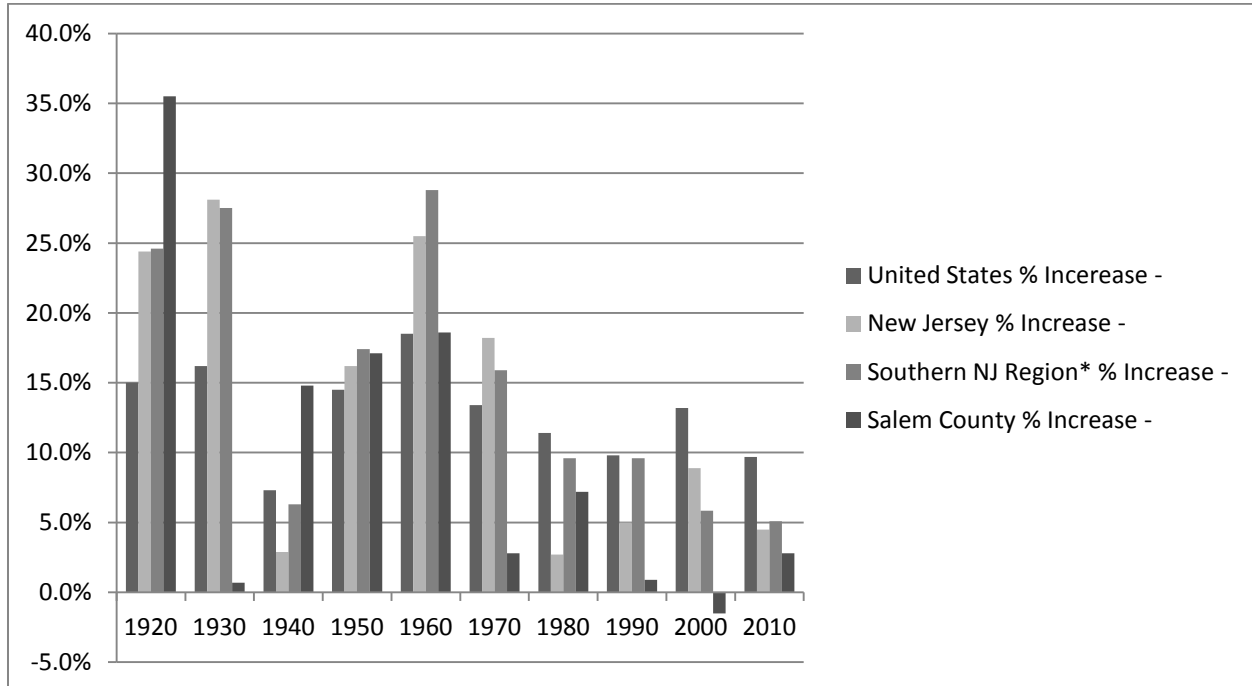
Source: Salem County Data Book, February 1995 and
U.S. Census Bureau, February 2013

Regional Growth Trends: 1910 to 2010

CENSUS YEAR	United States		New Jersey		Southern NJ Region*		Salem County	
	Population	% Increase	Population	% Increase	Population	% Increase	Population	% Increase
1910	9,228,531	-	2,537,167	-	353,193	-	26,999	-
1920	106,021,568	15.0%	3,155,900	24.4%	439,966	24.6%	36,572	35.5%
1930	123,202,660	16.2%	4,041,334	28.1%	561,027	27.5%	36,834	0.7%
1940	132,165,129	7.3%	4,160,165	2.9%	596,389	6.3%	42,274	14.8%
1950	151,325,798	14.5%	4,835,329	16.2%	700,105	17.4%	49,508	17.1%
1960	179,323,175	18.5%	6,066,782	25.5%	901,871	28.8%	58,711	18.6%
1970	203,302,031	13.4%	7,168,164	18.2%	1,045,289	15.9%	60,364	2.8%
1980	226,545,805	11.4%	7,364,823	2.7%	1,145,494	9.6%	64,676	7.2%
1990	248,709,873	9.8%	7,730,188	5.0%	1,255,699	9.6%	65,264	0.9%
2000	281,421,906	13.2%	8,414,350	8.9%	1,329,206	5.9%	64,285	-1.5%
2010	308,745,538	9.7%	8,791,894	4.5%	1,396,740	5.1%	66,083	2.8%

* The Southern New Jersey Region is comprised of the Counties of Atlantic, Camden, Cape May, Cumberland, Gloucester and Salem.

Percent Increase in Population per Decade



Source: US Census

Salem County Population Changes 2000 to 2010

	Population		Population Change	Percent Change	Percentage of County Population
	2000	2010	2000 - 2010	200-2010	2010
Alloway	2,774	3,467	693	24.98%	5.25%
Carneys Point	7,684	8,049	365	4.75%	12.18%
Elmer	1,384	1,395	11	0.79%	2.11%
Elsinboro	1,092	1,036	-56	-5.13%	1.57%
LAC	1,851	1,770	-81	-4.38%	2.68%
Mannington	1,559	1,806	247	15.84%	2.73%
Oldmans	1,798	1,773	-25	-1.39%	2.68%
Penns Grove	4,886	5,147	261	5.34%	7.79%
Pennsville	13,194	13,409	215	1.63%	20.29%
Pilesgrove	3,923	4,016	93	2.37%	6.08%
Pittsgrove	8,893	9,393	500	5.62%	14.21%
Quinton	2,786	2,666	-120	-4.31%	4.03%
Salem City	5,857	5,146	-711	-12.14%	7.79%
Upper Pittsgrove	3,468	3,505	37	1.07%	5.30%
Woodstown	3,136	3,505	369	11.77%	5.30%
Salem County	64,285	66,083	1,798	2.80%	100.00%
Urban Areas					
Carneys Point	7,684	8,049	365	4.75%	12.18%
Penns Grove	4,886	5,147	261	5.34%	7.79%
Pennsville	13,194	13,409	215	1.63%	20.29%
Salem City	5,857	5,146	-711	-12.14%	7.79%
Total Urban	31,621	31,751	130	-0.42%	48.05%

Source: 2000 & 2010 US Census

Place of Residence in 2005 of 2010 Salem County Residents

	Same Municipality	Different House in Salem County	Different County in New Jersey	Different State Then New Jersey	Residence Abroad	Total
Alloway	3,045	129	165	48	5	3,392
Carneys Point	7,119	553	230	89	16	8,007
Elmer	1,165	21	15	0	0	1,201
Elsinboro	1,123	28	26	24	0	1,201
L.A.C.	1,813	69	81	47	3	2,013
Mannington	1,264	57	16	16	0	1,353
Oldmans	1,835	45	108	0	0	1,988
Penns Grove	4,470	328	210	58	7	5,073
Pennsville	11,943	819	357	203	42	13,364
Pilesgrove	3,353	306	314	138	10	4,121
Pittsgrove	8,806	139	326	26	0	9,297
Quinton	2,620	29	27	12	0	2,688
Salem City	4,442	365	422	183	0	5,412
Upper Pittsgrove	3,256	96	110	14	0	3,476
Woodstown	3,039	146	219	54	0	3,458
Salem County	59,293	3,130	2,626	912	83	66,044

Source: US Census: 2006-2010 American Community Survey Estimates
From Selected Population Tables

Salem County Population By Age and Sex

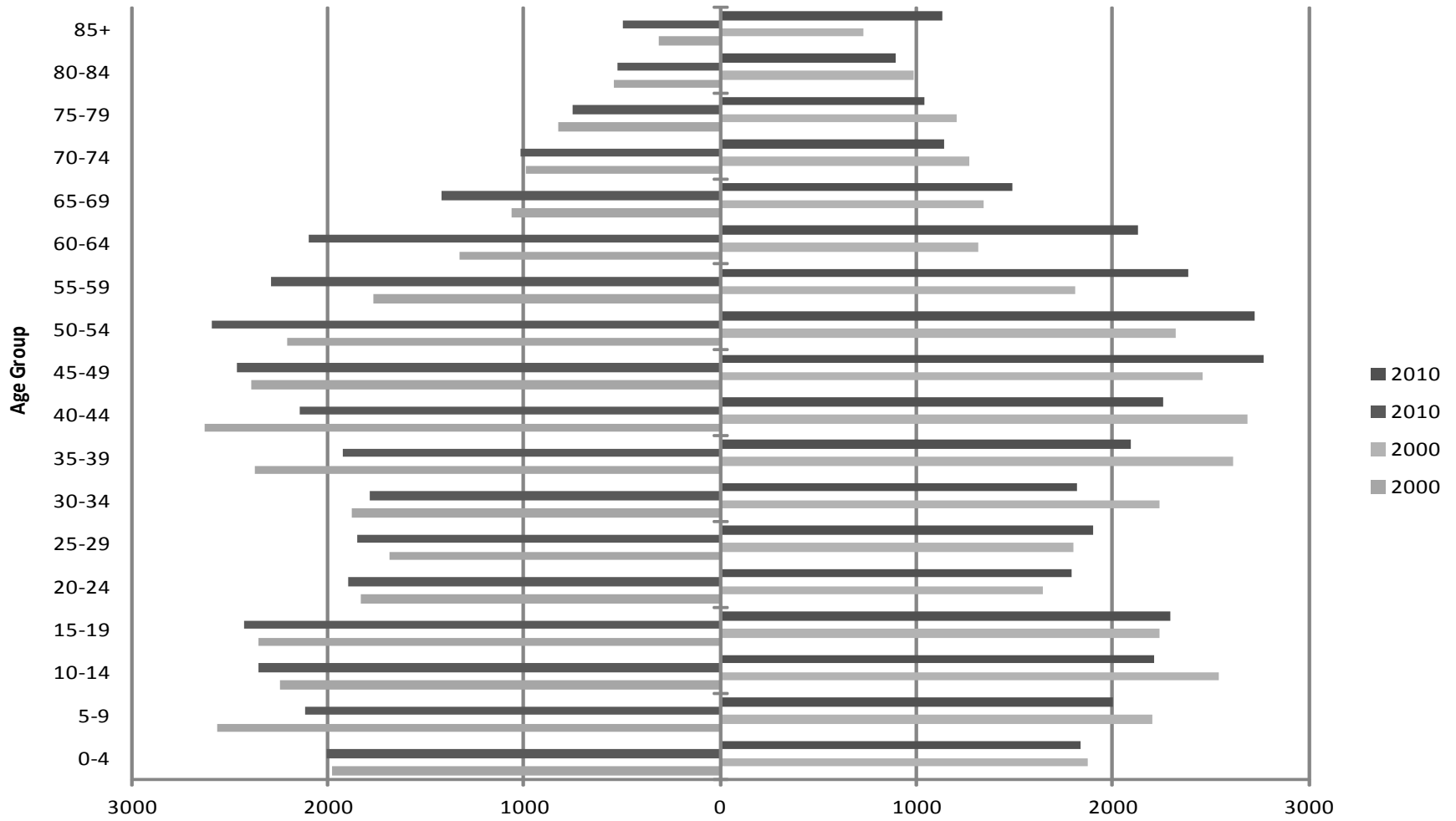
Age	2000			2010		
	Male	Female	Total	Male	Female	Total
Under 1	400	405	805	399	352	751
1 - 2	755	729	1,484	812	737	1,549
3 - 4	827	741	1,568	795	752	1,547
5	389	335	724	408	370	778
6	543	401	944	421	421	842
7 - 9	1,633	1,466	3,099	1,291	1,207	2,498
10 - 13	1,767	2,096	3,863	1,863	1,741	3,604
14	480	449	929	494	468	962
15	434	551	985	473	478	951
16	606	506	1,112	522	471	993
17	533	397	930	525	510	1,035
18	399	447	846	506	441	947
19	386	340	726	397	396	793
20	446	288	734	354	339	693
21	389	370	759	376	391	767
22 - 24	1,001	987	1,988	1,165	1,065	2,230
25 - 29	1,684	1,804	3,488	1,854	1,898	3,752
30 - 34	1,875	2,242	4,117	1,786	1,820	3,606
35 - 44	5,004	5,302	10,306	4,072	4,349	8,421
45 - 54	4,594	4,779	9,373	5,056	5,489	10,545
55 - 59	1,769	1,811	3,580	2,286	2,386	4,672
60 - 61	566	614	1,180	924	913	1,837
62 - 64	766	701	1,467	1,177	1,216	2,393
65 - 74	2,059	2,614	4,673	2,442	2,633	5,075
75 - 84	1,371	2,191	3,562	1,282	1,934	3,216
85+	312	731	1,043	498	1,128	1,626
TOTAL	30,988	33,297	64,285	32,178	33,905	66,083

Source: US Census: American Fact Finder

POPULATION COMPOSITION IN 2000 AND 2010

MALE

FEMALE



Source: US Census: American Fact Finder

Population in Thousands

Salem County Population Age 65 years or Older

	2000			2010		
	Total Population	Aged 65 & Over		Total Population	Aged 65 & Over	
		Number	%		Number	%
Alloway	2,774	343	12.4%	3,467	411	11.9%
Carneys Point	7,684	1,243	16.2%	8,049	1,508	18.7%
Elmer	1,384	214	15.5%	1,395	195	14.0%
Elsinboro	1,092	216	19.8%	1,036	211	20.4%
L.A.C.	1,851	258	13.9%	1,770	306	17.3%
Mannington	1,559	365	23.4%	1,806	315	17.4%
Oldmans	1,798	213	11.8%	1,773	238	13.4%
Penns Grove	4,886	576	11.8%	5,147	491	9.5%
Pennsville	13,194	2,047	15.5%	13,409	2,090	15.6%
Pilesgrove	3,923	566	14.4%	4,016	843	21.0%
Pittsgrove	8,893	1,014	11.4%	9,393	1,177	12.5%
Quinton	2,786	441	15.8%	2,666	433	16.2%
Salem	5,857	821	14.0%	5,146	641	12.5%
Upper Pittsgrove	3,468	477	13.8%	3,505	550	15.7%
Woodstown	3,136	517	16.5%	3,505	508	14.5%
Salem County	64,285	9,311	14.5%	66,083	9,917	15.0%
New Jersey	8,414,350	1,113,136	13.2%	8,791,894	1,185,993	13.5%

SOURCE: US Census: American Fact Finder

Place of Birth Salem County Residents, 2010

	New Jersey	Other US Areas	American Born Abroad *	Foreign Born	Total
Alloway	2,108	1,237	0	11	3,356
Carneys Point	4,441	2,958	85	530	8,014
Elmer	945	249	4	26	1,224
Elsinboro	781	371	0	30	1,182
L.A.C.	1,298	618	4	60	1,980
Mannington	989	349	9	28	1,375
Oldmans	1,168	699	11	132	2,010
Penns Grove	3,162	1,242	275	439	5,118
Pennsville	7,892	4,960	194	364	13,410
Pilesgrove	2,392	1,448	46	130	4,016
Pittsgrove	6,625	2,508	146	58	9,337
Quinton	1,850	821	18	14	2,703
Salem	3,480	1,371	79	359	5,289
Upper Pittsgrove	2,481	902	11	121	3,515
Woodstown	2,054	1,329	0	70	3,453
Salem County	41,666	21,062	882	2,372	65,982

* - Includes Puerto Rico and outlying US Territories.

Source: US Census: 2006-2010 American Community
Survey Estimates

Racial and Ethnic Composition by Sex, Salem County, 2000

	Total Population		White		African American		Other, Non-white		Hispanic*	
	Female	Male	Female	Male	Female	Male	Female	Male	Female	Male
Alloway	1,363	1,411	1,244	1,272	88	103	18	20	8	58
Carneys Point	4,017	3,667	3,155	2,879	667	583	132	123	146	160
Elmer	713	671	695	651	6	3	6	11	10	11
Elsinboro	574	518	542	496	24	15	3	2	5	2
L.A.C.	957	894	923	861	19	21	8	9	2	7
Mannington	796	763	607	572	168	158	14	27	16	36
Oldmans	889	908	770	791	89	84	19	25	34	41
Penns Grove	2,634	2,252	1,284	1,103	1,078	864	214	223	403	442
Pennsville	6,857	6,337	6,650	6,106	67	60	91	110	97	114
Pilesgrove	1,894	2,029	1,677	1,643	169	309	34	57	42	75
Pittsgrove	4,490	4,403	3,946	3,892	366	349	106	99	146	157
Quinton	1,395	1,391	1,142	1,144	205	198	30	29	19	23
Salem City	3,242	2,615	1,202	992	1,858	1,467	64	66	148	138
Upper Pittsgrove	1,740	1,728	1,668	1,621	35	75	21	53	32	77
Woodstown	1,677	1,459	1,429	1,238	219	186	19	18	20	29
Salem County	33,238	31,046	26,934	25,261	5,058	4,475	779	872	1,128	1,370

NOTE: * - People of Hispanic origin are members of White, African American or other races, and are included in those statistics. Hispanic origin is shown in a separate column for statistical purposes, as reported in the 2000 Census.

Source: US Census: American Fact Finder

Race and Ethnic Composition, Salem County, 2000

	Total			Non-white					
	Population	White	%	African American	%	Other,	%	Hispanic*	%
Alloway	2,774	2,516	90.70%	191	6.89%	38	1.37%	66	2.38%
Carneys Point	7,684	6,034	78.53%	1,250	16.27%	255	3.32%	36	0.47%
Elmer	1,384	1,346	97.25%	9	0.65%	17	1.23%	21	1.52%
Elsinboro	1,092	1,038	95.05%	39	3.57%	5	0.46%	7	0.64%
L.A.C.	1,851	1,784	96.38%	40	2.16%	17	0.92%	9	0.49%
Mannington	1,559	1,179	75.63%	326	20.91%	41	2.63%	52	3.34%
Oldmans	1,797	1,561	86.87%	173	9.63%	44	2.45%	75	4.17%
Penns Grove	4,886	2,387	48.85%	1,942	39.75%	437	8.94%	845	17.29%
Pennsville	13,194	12,756	96.68%	127	0.96%	201	1.52%	211	1.60%
Pilesgrove	3,923	3,320	84.63%	478	12.18%	91	2.32%	117	2.98%
Pittsgrove	8,893	7,838	88.14%	715	8.04%	205	2.31%	303	3.41%
Quinton	2,786	2,286	82.05%	403	14.47%	59	2.12%	42	1.51%
Salem City	5,857	2,194	37.46%	3,325	56.77%	130	2.22%	286	4.88%
Upper Pittsgrove	3,468	3,289	94.84%	110	3.17%	74	2.13%	109	3.14%
Woodstown	3,136	2,667	85.04%	405	12.91%	37	1.18%	49	1.56%
Salem County	64,284	52,195	81.19%	9,533	14.83%	1,651	2.57%	2,228	3.47%

NOTE: * - People of Hispanic origin are members of White, African American or other races, and are included in those statistics. Hispanic origin is shown in a separate column for statistical purposes, as reported in the 2000 Census.

Source: US Census: American Fact Finder

Racial Composition by Sex, Salem County, 2010

	Total Population		White		African American		Other, Non-white		Hispanic	
	Female	Male	Female	Male	Female	Male	Female	Male	Female	Male
Alloway	1,717	1,750	1,590	1,582	68	108	32	35	35	33
Carneys Point	4,232	3,817	3,158	2,805	729	632	257	280	425	475
Elmer	713	682	672	640	14	16	16	21	20	24
Elsinboro	523	513	486	478	16	20	8	9	15	8
L.A.C.	903	867	872	844	10	14	7	3	17	10
Mannington	747	1,059	595	716	119	262	25	66	46	102
Oldmans	907	866	789	762	73	64	13	29	56	68
Penns Grove	2,716	2,431	1,128	1,025	1,127	920	332	365	690	765
Pennsville	6,873	6,536	6,507	6,189	101	105	183	164	206	205
Pilesgrove	2,073	1,943	1,892	1,755	116	122	36	40	51	53
Pittsgrove	4,720	4,673	4,158	4,124	341	314	125	134	211	240
Quinton	1,361	1,305	1,100	1,075	182	162	28	29	47	60
Salem City	2,847	2,299	871	735	1,802	1,395	69	67	174	170
Upper Pittsgrove	1,730	1,775	1,646	1,680	34	42	23	32	52	54
Woodstown	1,843	1,662	1,516	1,367	223	178	47	58	90	105
Salem County	33,905	32,178	26,980	25,777	4,955	4,354	1,201	1,332	2,135	2,372

NOTE: * - People of Hispanic origin are members of White, African American or other races, and are included in those statistics. Hispanic origin is shown in a separate column for statistical purposes, as reported in the 2010 Census.

Source: US Census American Fact Finder

Racial and Ethnic Composition, Salem County, 2010

	Total			Non-white					
	Population	White	%	African American	%	Other,	%	Hispanic*	%
Alloway	3,467	3,172	91.49%	176	5.08%	67	1.93%	68	1.96%
Carneys Point	8,049	5,963	74.08%	1,361	16.91%	537	6.67%	900	11.18%
Elmer	1,395	1,312	94.05%	30	2.15%	37	2.65%	44	3.15%
Elsinboro	1,036	964	93.05%	36	3.47%	17	1.64%	23	2.22%
L.A.C.	1,770	1,716	96.95%	24	1.36%	10	0.56%	27	1.53%
Mannington	1,806	1,311	72.59%	381	21.10%	91	5.04%	148	8.19%
Oldmans	1,773	1,551	87.48%	137	7.73%	42	2.37%	124	6.99%
Penns Grovve	5,147	2,153	41.83%	2,047	39.77%	697	13.54%	1,455	28.27%
Pennsville	13,409	12,696	94.68%	206	1.54%	347	2.59%	411	3.07%
Pilesgrove	4,016	3,647	90.81%	238	5.93%	76	1.89%	104	2.59%
Pittsgrove	9,393	8,282	88.17%	655	6.97%	259	2.76%	451	4.80%
Quinton	2,666	2,175	81.58%	344	12.90%	57	2.14%	107	4.01%
Salem City	5,146	1,606	31.21%	3,197	62.13%	136	2.64%	344	6.68%
Upper Pittsgrove	3,505	3,326	94.89%	76	2.17%	55	1.57%	106	3.02%
Woodstown	3,505	2,883	82.25%	401	11.44%	105	3.00%	195	5.56%
Salem County	66,083	52,757	79.83%	9,309	14.09%	2,533	3.83%	4,507	6.82%

NOTE: * - People of Hispanic origin are members of White, African American or other races, and are included in those statistics. Hispanic origin is shown in a separate column for statistical purposes, as reported in the 2010 Census.

Source: US Census American Fact Finder

Salem County Ancestry, 2010

	Single Ancestry		Single Ancestry
Albanian	12	Polish	859
American	3,023	Portuguese	128
Arab	42	Romanian	34
Armenian	8	Russian	187
Australian	6	Scandinavian	32
Austrian	22	Scotch - Irish	380
Belgian	17	Scottish	339
Brazilian	53	Slovak	49
British	84	SubSaharan African	246
Canadian	23	Swedish	154
Celtic	31	Swiss	0
Croatian	6	Ukranian	150
Czech	12	Welsh	186
Czechoslovakian	16	West Indian (Except Hispanic Groups)	238
Danish	0	Yugoslavian	7
Dutch	192	Other groups	13,078
Eastern European	38		
English	2,680		
Estonian	21	Source: US Census: American Community Survey	
European	402		
Finnish	22		
French (except Basque)	196		
French Canadian	222		
German	3,924		
Greek	85		
Guyanese	17		
Hungarian	169		
Iranian	21		
Irish	3,947		
Italian	4,846		
Lithuanian	169		
Northern European	10		
Norwegian	76		
Pennsylvania German	105		

Salem County Marital Status

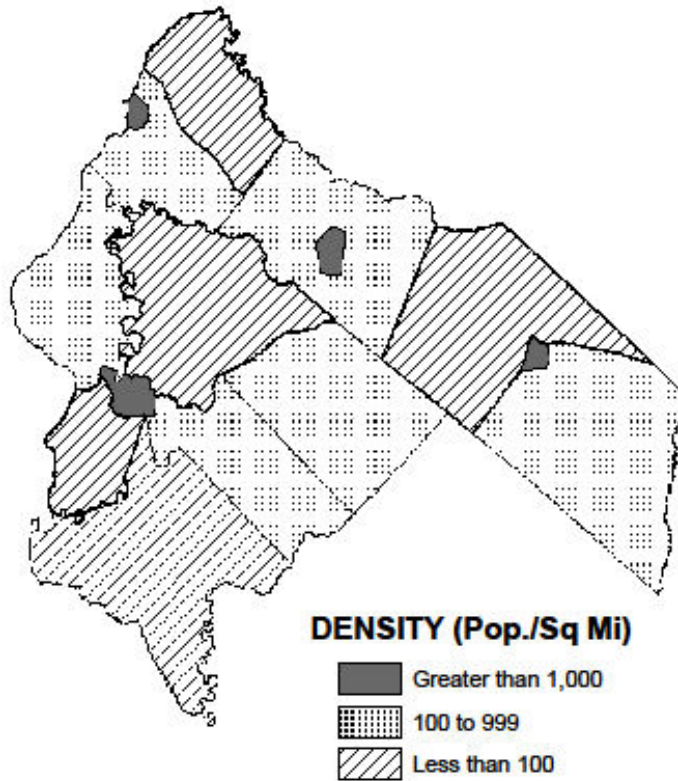
	2000		2010	
	Number	%	Number	%
MALE:	24,194	100.0%	25,506	100.0%
Single	6,791	28.1%	8,688	34.1%
Married	14,048	58.1%	13,411	52.6%
Separated	514	2.1%	441	1.7%
Widowed	839	3.5%	777	3.0%
Divorced	2,002	8.3%	2,189	8.6%
FEMALE:	26,675	100.0%	27,766	100.0%
Single	6,312	23.7%	7,550	27.2%
Married	13,863	52.0%	13,232	47.7%
Separated	835	3.1%	558	2.0%
Widowed	3,435	12.9%	3,486	12.6%
Divorced	2,230	8.4%	2,940	10.6%

SOURCE: 2000 Data - US Census American Fact Finder
2010 Data US Census American Community Survey

Municipal Densities, 2010

Ranked by decreasing density

	Population	Area (Sq. Miles)	Density (Pop./Sq. Mi.)
Penns Grove	5,147	1.00	5,147.0
Woodstown	3,505	1.56	2,246.8
Salem	5,146	2.75	1,871.3
Elmer	1,395	0.75	1,860.0
Pennsville	13,409	24.20	554.1
Carneys Point	8,049	17.98	447.7
Pittsgrove	9,393	46.85	200.5
Pilesgrove	4,016	37.40	107.4
Quinton	2,666	25.30	105.4
Alloway	3,467	34.50	100.5
Oldmans	1,773	20.10	88.2
Upper Pittsgrove	3,505	40.00	87.6
Elsinboro	1,036	13.11	79.0
Mannington	1,806	38.00	47.5
L.A.C.	1,770	46.26	38.3
Salem County	66,083	349.76	188.9



II. Education

Salem County Educational Attainment Persons Aged 25 or Older, 2010

	Less Than 9th Grade	9th to 12th Grade *	High School Graduate #	Some College *	Associate Degree	Bachelor's Degree	Graduate or Professional Degree
Alloway	35	73	587	506	301	332	152
Carneys Point	288	677	2,135	1,177	452	559	168
Elmer	14	60	357	198	41	119	79
Elsinboro	40	4,072	326	245	59	123	44
L.A.C.	83	163	498	304	108	112	81
Mannington	24	71	411	176	73	112	84
Oldmans	76	176	487	312	160	133	101
Penns Grove	269	505	1,202	623	123	164	68
Pennsville	390	726	3,993	1,751	866	1,467	503
Pilesgrove	123	155	1,068	491	261	525	231
Pittsgrove	316	564	2,393	1,310	496	921	405
Quinton	58	184	865	473	202	156	18
Salem	326	553	1,294	587	249	146	139
Upper Pittsgrove	57	221	1,141	418	158	319	142
Woodstown	33	95	760	435	80	503	266
Salem County	2,132	8,295	17,517	9,006	3,629	5,691	2,481

Note: * = No degree earned
= Includes equivalency degrees

Salem County Educational Enrollment Persons Aged 3 or Older, 2010

	Preschool	Kindergarten	Elementary Grades 1-8	High School Grades 9-12	College or Graduate School
Alloway	67	46	511	393	207
Carneys Point	181	59	606	543	634
Elmer	28	14	100	1	66
Elsinboro	4	0	108	58	57
L.A.C.	39	39	206	134	105
Mannington	12	31	118	85	61
Oldmans	15	34	225	116	106
Penns Grove	55	138	592	412	317
Pennsville	146	136	1,280	663	728
Pilesgrove	42	28	307	329	218
Pittsgrove	102	136	910	747	423
Quinton	93	13	328	65	101
Salem	126	106	700	374	388
Upper Pittsgrove	48	34	440	164	190
Woodstown	28	41	512	283	258
Salem County	986	855	6,943	4,367	3,859

Source: US Census, American Community Survey - 2006 - 2010

Public School Facilities, Salem County, NJ

District	School	Location	Grades	Students (*1)	High School District
Alloway	Alloway Public School	Cedar Street	Pre K - 8	403	Woodstown
Elsinboro	Elsinboro Twp School	Ft. Elfsborg Road	K - 8	119	Schalick
L.A.C.	L.A.C. Public School	Main St - Canton	Pre K - 8	204	Salem
Mannington	Mannington Twp School	Salem-Woodstown Rd	Pre K - 8	182	Salem
Oldmans	Pedricktown Elementary Oldmans Middle School	Railroad Ave Freed Road	K - 4 5 - 8	230	CP/PG or Woodstown
Penns Grove/ Carneys Point	Lafayette-Pershing School Field St School Paul W Carlton School Penns Grove Middle School CP-PG High School	Shell Road, CP Field Street, PG Maple Avenue, PG Maple Avenue, PG Harding Highway, CP	K - 1 2 - 3 4 - 5 6 - 8 9 - 12	2,252	CP/PG
Pennsville	Central Park Elementary Penn Beach Elementary Valley Park Elementary Pennsville Middle School Memorial High School	Oliver Street Kansas Road Mahoney Road William Penn Avenue South Broadway	K - 5 K - 5 K - 5 6 - 8 9 - 12	1,819	Pennsville
Pittsgrove	Elmer Elementary School Norma Elementary School Olivet Elementary School Pittsgrove Middle School A. P. Shalick High School	Front Street, Elmer Gershel Avenue Elmer - Centerton Rd Centerton - Norma Rd Buck Road	K - 6 K, Sp Ed K/1 1 - 4 5 - 6 7 - 12	1,771	Schalick
Quinton	Quinton Twp School	Robinson Street	K - 8	379	Salem
Salem	John Fenwick School Salem Middle School Salem High School	New Market Street New Market Street Walnut Street	K - 4 5 - 8 9 - 12	1,203	Salem
Upper Pittsgrove	Daretown School Upper Pittsgrove Township	Main St, Daretown Pine Tavern Road	K - 4 5 - 8	383	Woodstown
Woodstown/ Pilesgrove	Mary S. Shoemaker Middle School Woodstown High School	East Millbrooke Ave Lincoln Avenue East Avenue	K - 4 5 - 8 9 - 12	1,600	Woodstown
Special Services	Multiple Programs (*2) Office:104 Market St, Salem		K - 12	174	Self
Vo-Tech Ed. Spec. Ed/Voc.	Multiple Programs Office: Rte 45 (PO Box 350 Woodstown)		(* 3) (* 4)	646	
NOTES:	* 1 District Total as of 10/2012 * 2 - Serves County Wide Ed and disabled * 3 - Students participate in Voc. Ed on shared time basis * 4 - Special Education Vocational			Source: NJ Dept. of Education - Salem County Office	

Pupil Count 2011-2012

Salem County Public Schools by Grade and District

District	Pre K	K	1	2	3	4	5	6	7	8	9	10	11	12	Voc.	Classified	Total
Alloway	29	38	33	39	38	36	39	35	38	39						38.0	402.0
Elsinboro		8	19	15	13	8	12	9	15	8						12.0	119.0
L.A.C.	21	19	8	20	16	17	19	23	24	25						12.0	204.0
Mannington	15	20	18	15	18	13	15	13	20	15						20.0	182.0
Oldmans		31	28	21	18	21	25	21	23	19						23.0	230.0
P.G. - C.P.	161	175	187	160	124	146	137	110	120	128	127	99	87.5	90.5		400.5	2,252.5
Pennsville	20	131	105	128	119	108	120	123	131	119	91	95	95	103.5		330.5	1,819.0
Pittsgrove	52	92	89	94	107	98	102	124	134	140	128.5	120	95.5	136		259.0	1,771.0
Quinton	25	37	31	39	42	39	29	44	26	43						24.0	379.0
Salem City	159	83	87	60	65	58	70	63	57	57	69	66	62.5	59		188.0	1,203.5
Upper Pittsgrove	7.5	33	27	41	32	33	34	42	38	34						61.5	383.0
Woodstown/Pilesgrove	39	85	76	72	81	77	79	82	72	97	160	140	153	175		212.0	1,600.0
Special Services									1	3	7	8	7	2.5		146.0	174.5
Vocational															646	119.5	765.5
Total	528.5	752	708	704	673	654	681	689	699	727	582.5	528	500.5	566.5	646	1846.0	11,485.0

Source: NJ Department of Education -
Salem County Office

NOTE: .5 represents shared time students

III. Income

Salem County Income Statistics, 2010

	Median Income		2010
	Household	Family	
Alloway	\$86,979	\$91,979	\$27,649
Carneys Point	\$51,277	\$65,224	\$26,020
Elmer	\$65,417	\$78,661	\$29,065
Elsinboro	\$64,107	\$73,333	\$31,008
L.A.C.	\$66,384	\$72,969	\$27,325
Mannington	\$63,650	\$75,625	\$33,369
Oldmans	\$66,016	\$68,077	\$29,150
Penns Grove	\$30,104	\$37,663	\$15,785
Pennsville	\$58,153	\$71,327	\$29,275
Pilesgrove	\$87,083	\$102,870	\$34,966
Pittsgrove	\$74,348	\$83,564	\$28,606
Quinton	\$65,061	\$75,833	\$38,286
Salem	\$25,682	\$29,805	\$17,733
Upper Pittsgrove	\$80,957	\$83,438	\$30,264
Woodstown	\$62,958	\$74,497	\$31,074
Salem County	\$59,441	\$72,537	\$27,296

Regional Per Capita Income Comparison, 2010

Atlantic County	\$27,247
Camden County	\$29,478
Cape May County	\$31,571
Cumberland County	\$21,833
Gloucester County	\$31,210
Salem County	\$27,296

Income Range	Household	Family
\$0 to \$10,000	1,593	673
\$10,000 to \$14,999	1,241	318
\$15,000 to \$24,999	2,355	1,084
\$25,000 to \$34,999	2,403	1,243
\$35,000 to \$49,999	2,864	1,923
\$50,000 to \$74,999	5,162	3,788
\$75,000 to \$99,999	3,664	3,009
\$100,000 to \$149,000	3,969	3,516
\$150,000 to \$199,999	1,182	1,104
\$200,000 or more	684	610

Source: US Census: 2006 - 2010 American Community Survey 5 Year Estimates

Salem County Poverty Status in 2010

By Age

Age Group	Above Poverty		Below Poverty	
	Number	Percent	Number	Percent
0 to 5	3,620	6.2%	1,050	15.9%
6 to 11	4,283	7.3%	595	9.0%
12 to 17	5,270	9.0%	667	10.1%
18 to 24	4,684	8.0%	663	10.1%
25 to 34	6,135	10.5%	792	12.0%
35 to 44	8,343	14.3%	761	11.5%
45 to 54	9,742	16.6%	686	10.4%
55 to 64	7,677	13.1%	712	10.8%
65 to 74	4,565	7.8%	224	3.4%
75 and older	4,201	7.2%	445	6.7%
Total	58,520	89.9%	6,595	10.1%

By Household Type

Household Type	Above Poverty		Below Poverty	
	Number	Percent	Number	Percent
Married couple with related children				
Under age 5	2,394	18.2%	188	8.7%
Age 5 to 17	7,346	55.8%	236	10.9%
Male, no spouse with related children				
Under age 5	101	0.8%	10	0.5%
Age 5 to 17	1,003	7.6%	83	3.8%
Female, no spouse with related children				
Under age 5	453	3.4%	749	34.5%
Age 5 to 17	1,870	14.2%	905	41.7%
Total	13,167	85.8%	2171	14.2%

Source: US Census: 2006-2010 American Community Survey 5 Year Estimates

Salem County Public Assistance Status, 2010

	Total Households	With Public Assistance Income	Percent of Total Households	Without Public Assistance Income	Percent of Total Households
Alloway	1,037	13	1.25%	1,024	98.75%
Carneys Point	3,151	286	9.08%	2,865	90.92%
Elmer	482	19	3.94%	463	96.06%
Elsinboro	494	17	3.44%	477	96.56%
L.A.C.	727	19	2.61%	708	97.39%
Mannington	529	4	0.76%	525	99.24%
Oldmans	767	40	5.22%	727	94.78%
Penns Grove	1,918	514	26.80%	1,404	73.20%
Pennsville	5,725	400	6.99%	5,325	93.01%
Pilesgrove	1,344	32	2.38%	1,312	97.62%
Pittsgrove	3,158	139	4.40%	3,019	95.60%
Quinton	1,102	65	5.90%	1,037	94.10%
Salem	2,138	499	23.34%	1,639	76.66%
Upper Pittsgrove	1,180	11	0.93%	1,169	99.07%
Woodstown	1,365	66	4.84%	1,299	95.16%
Salem County	25,117	2,124	8.46%	22,993	91.54%

Source: US Census; 2006-2010 American Community Survey 5 Year Estimates

**IV. Employment
and
Industry**

Partial List of Major Employers in Salem County as of 2010

Employer	Location	No. of Employees
PSEG Nuclear	L.A.C.	1,500
E.I. DuPont	Carneys Point	900
Mannington Mills	Mannington	800
Memorial Hospital of Salem County	Mannington	720
McLane New Jersey	Carneys Point	401
Richard E. Pierson Construction	Pilesgrove	400
South Jersey Hospital, Inc.	Elmer	400
Anchor Glass Container Corp.	Salem City	376
Larchmont Farms	Upper Pittsgrove	275
Berkowitz Glass	Oldmans	250
Wal-Mart	Pennsville	250
Salem Community College	Carneys Point	180
B & B Poultry Co., Inc.	Pittsgrove	175
Seigfried Inc.	Pennsville	175
Carneys Point Care Center	Carneys Point	170
Southgate Healthcare Center	Carneys Point	170
Home Care & Hospice Care of South Jersey, Inc.	Salem City	160
Ross Fogg Fuel Oil, Inc.	Elsinboro	160
CFJ Properties	Carneys Point	150

Source: Salem County, NJ An Economic Resource Guide; Sponsored by The Salem County Improvement Authority - 2010

Employment Statistics Summary Salem County, 2011

By Municipality

	Civilian Labor Force				Not in Labor Force
	Employed		Unemployed		
	Number	Percent	Number	Percent	
Alloway	1,747	66.4%	90	3.4%	796
Carneys Point	3,611	54.4%	532	8.0%	2,485
Elmer	612	59.6%	87	8.5%	327
Elsinboro	466	49.3%	43	4.5%	437
L.A.C.	74	53.5%	78	0.3%	592
Mannington	628	47.1%	82	6.2%	623
Oldmans	1,035	68.8%	51	3.4%	418
Penns Grove	2,033	55.9%	312	8.6%	1,293
Pennsville	6,035	55.7%	644	5.9%	4,150
Pilesgrove	1,973	58.5%	189	5.6%	1,213
Pittsgrove	4,699	63.0%	420	5.6%	2,327
Quinton	1,278	61.7%	89	4.3%	705
Salem	1,576	40.7%	685	17.7%	1,608
Upper Pittsgrove	1,642	59.6%	150	5.4%	964
Woodstown	1,548	56.6%	204	7.5%	984
Salem County	28,957		3,656		18,922

Source: US Census - 2007-2011 American Community Survey
5 Year Estimates

Employment Statistics Summary Salem County, 2011

By Race and Sex

	Civilian Labor Force				Not in Labor Force
	Employed		Unemployed		
	Number	Percent	Number	Percent	
Total	29,362	89.1%	3,574	10.9%	18,709
Male	15,185	88.3%	2,005	11.7%	7,452
Female	14,177	90.0%	1,569	10.0%	11,257
White	25,271	91.2%	2,452	8.8%	15,333
Male	13,360	90.4%	1,412	9.6%	6,040
Female	11,911	92.0%	1,040	8.0%	9,293
African American	3,329	78.0%	940	22.0%	2,813
Male	1,431	74.7%	485	25.3%	1,240
Female	1,898	80.7%	455	19.3%	1,573
Asian	312	92.9%	24	7.1%	133
Male	150	100.0%	0	0.0%	36
Female	162	87.1%	24	12.9%	97
Native American & Alaska Native	92	100.0%	0	0.0%	109
Male	82	100.0%	0	0.0%	10
Female	10	100.0%	0	0.0%	99
Native Hawaiian & Pacific Islander	6	100.0%	0	0.0%	0
Male	0	0.0%	0	0.0%	0
Female	6	100.0%	0	0.0%	0
Some Other Race	352	69.0%	158	31.0%	321
Male	162	60.0%	108	40.0%	126
Female	190	79.2%	50	20.8%	195
Hispanic	1,408	75.7%	453	24.3%	919
Male	823	75.6%	266	24.4%	283
Female	585	75.8%	187	24.2%	636

Source: US Census - 2007-2011 American Community Survey 5 Year Estimates

Labor Force and Employment in Southern New Jersey 2000 to 2010

LABOR FORCE

REGION	2000		2010		Change 2000 to 2010		
	Number	Percent	Number	Percent	Number	Percent	Annual
New Jersey	4,287,785	100.0%	4,554,079	100.0%	266,294	6.2%	0.56%
Southern Region	670,713	15.6%	726,729	16.0%	56,016	8.4%	0.76%
Atlantic	128,989	3.0%	137,168	3.0%	8,179	6.3%	0.58%
Camden	254,262	5.9%	269,200	5.9%	14,938	5.9%	0.53%
Cape May	55,540	1.3%	58,469	1.3%	2,929	5.3%	0.48%
Cumberland	65,539	1.5%	71,266	1.6%	5,727	8.7%	0.79%
Gloucester	134,838	3.1%	158,983	3.5%	24,145	17.9%	1.63%
Salem	31,545	0.7%	31,643	0.7%	98	0.3%	0.03%

EMPLOYMENT

REGION	2000		2010		Change 2000 to 2010		
	Number	Percent	Number	Percent	Number	Percent	Annual
New Jersey	4,130,309	100.0%	4,116,641	100.0%	-13,668	-0.3%	-0.03%
Southern Region	641,437	15.5%	643,531	15.6%	2,094	0.3%	0.03%
Atlantic	122,980	3.0%	119,715	2.9%	-3,265	-2.7%	-0.24%
Camden	244,434	5.9%	240,128	5.8%	-4,306	-1.8%	-0.16%
Cape May	51,979	1.3%	51,324	1.2%	-655	-1.3%	-0.11%
Cumberland	61,744	1.5%	61,577	1.5%	-167	-0.3%	-0.02%
Gloucester	129,971	3.1%	142,796	3.5%	12,825	9.9%	0.90%
Salem	30,329	0.7%	27,991	0.7%	-2,338	-7.7%	-0.70%

Source: NJ Department of Labor and Workforce Development

Employment Comparison, Salem County

	2000			2010			Employment per Square Mile
	Labor Force	Employment	Percent Unemployed	Labor Force	Employment	Percent Unemployed	
Alloway	1,417	1,357	4.2%	1,431	1,253	12.5%	36
Carneys Point	3,686	3,482	5.6%	3,809	3,213	15.6%	179
Elmer	756	736	2.6%	739	679	8.1%	905
Elsinboro	573	560	23.0%	536	516	3.7%	39
L.A.C.	973	953	2.0%	939	880	6.3%	19
Mannington	735	715	2.7%	719	660	8.3%	17
Oldmans	955	922	3.5%	960	861	10.3%	43
Penns Grove	2,094	1,875	10.4%	2,395	1,740	27.3%	1,740
Pennsville	6,931	6,746	2.7%	6,781	6,226	8.2%	257
Pilesgrove	1,939	1,886	2.7%	1,910	1,731	9.4%	46
Pittsgrove	4,687	4,528	3.4%	4,655	4,179	10.2%	89
Quinton	1,276	1,223	4.1%	1,297	1,138	12.2%	45
Salem City	2,163	2,031	6.1%	2,291	1,874	18.2%	682
Upper Pittsgrove	1,757	1,730	1.5%	1,676	1,597	4.7%	40
Woodstown	1,618	1,585	2.0%	1,562	1,463	6.4%	938
Salem County	31,545	30,329	3.9%	31,700	27,991	11.5%	80

Source: NJ Department of Labor and Workforce Development

Occupation of Civilian Employed Population Aged 16 or Older, Salem County, 2010

	Number	Percent
Management , Business, Science and Arts Occupations	9,274	30.9%
Service Occupations	4,815	16.0%
Sales and Office Occupations	7,157	23.8%
Natural Resources, Construction and Maintenance Occupations	3,675	12.2%
Production, Transportation and Material Moving Occupations	5,103	17.1%
TOTAL	30,024	100.0%

Industry by Civilian Employed Population Aged 16 or Older, Salem County, 2010

	Number	Percent
Agriculture, Forestry, Fishing & Hunting, and Mining	517	1.7%
Construction	2,595	8.6%
Manufacturing	3,923	13.1%
Wholesale Trade	1,090	3.6%
Retail Trade	3,421	11.4%
Transportation & Warehousing, and Utilities	2,903	9.7%
Information	416	1.4%
Finance & Insurance, Real Estate, and Rental & Leasing	1,419	4.7%
Professional, Scientific, Management, and Administrative & Waste Management Services	2,677	8.9%
Educational Services, and Health Care & Social Assistance	6,466	21.5%
Arts, Entertainment & Recreation, and Accommodation & Food Services	1,760	5.9%
Other Services except Public Administration	1,180	3.9%
Public Administration	1,657	5.6%
TOTAL	30,024	100.0%

Source: US Census: 2007-2011 American Community Survey 5 Year Estimates of Selected Economic Characteristics

V. Journey to Work

Journey To Work, 2010

Salem County Workforce Aged 16 or Older

By Municipality

Commuted From	Destination			TOTAL
	Salem County	Other NJ County	Outside NJ	
Alloway	781	630	201	1,612
Carneys Point	1,856	1,188	656	3,700
Elmer	201	325	50	576
Elsinboro	320	80	77	477
L.A.C.	509	232	96	837
Mannington	308	179	104	591
Oldmans	489	315	252	1,056
Penns Grove	1,064	457	431	1,952
Pennsville	3,332	987	1,539	5,858
Pilesgrove	928	623	302	1,853
Pittsgrove	1,267	3,269	206	4,742
Quinton	752	504	109	1,365
Salem City	1,075	451	145	1,671
Upper Pittsgrove	503	823	179	1,505
Woodstown	617	523	275	1,415
Salem County	14,002	10,586	4,622	29,210

By Means of Transportation

	Number	Percent
Car, Truck or Van		
Drove Alone	24,483	83.80%
Carpooled	2,643	9.00%
Public Transportation	434	1.50%
Walked	554	1.90%
Other Means	260	0.90%
Worked from Home	836	2.90%
TOTAL	29,210	100.00%

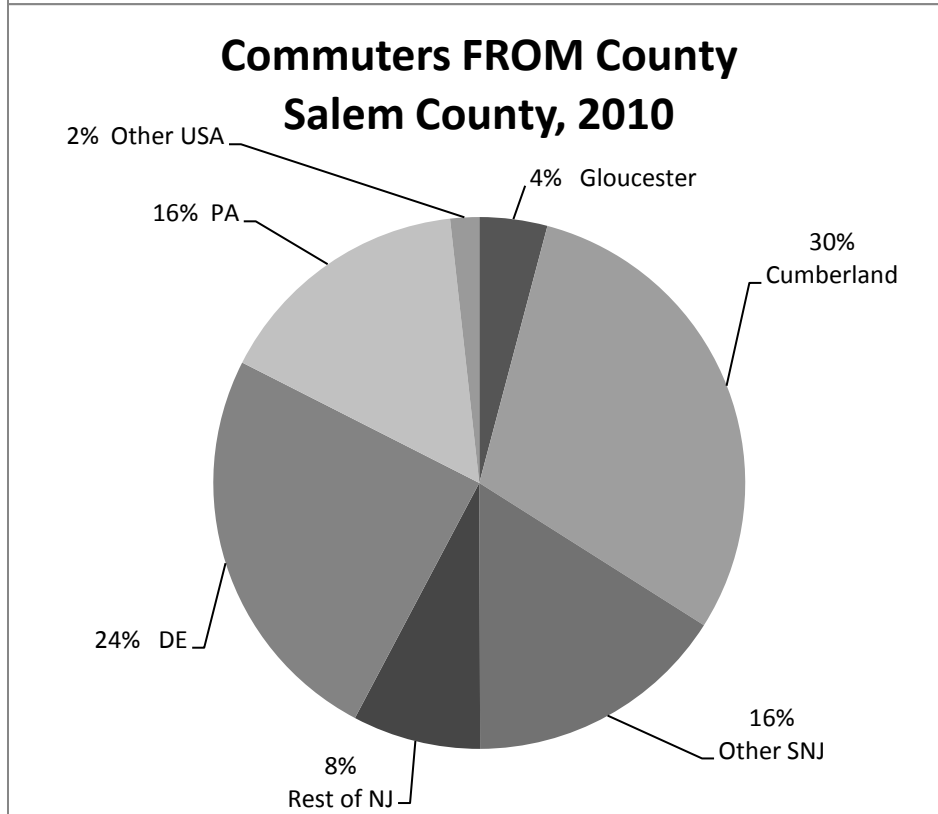
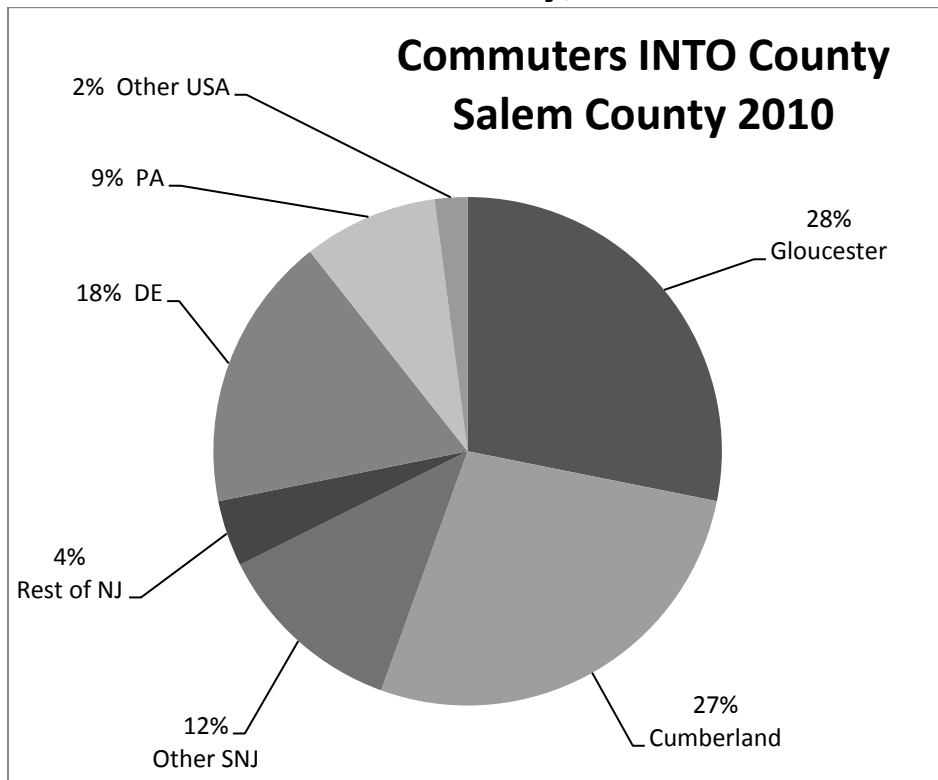
Source: US Census - 2006-2010 American Community Survey 5 Year Estimates of Means of Transportation to Work by Place of Work - State and County Level

Journey To Work Commuting Patterns Salem County, 2010

Live and Work in County	14,002	
	INTO Salem County	From Salem County
Southern New Jersey	6,074	5,325
Atlantic	314	401
Camden	732	1,166
Cape May	41	135
Cumberland	2,459	3,183
Gloucester	2,528	440
Other New Jersey	379	831
Burlington	207	382
Essex	0	20
Hudson	21	34
Hunterdon	0	15
Mercer	51	211
Middlesex	0	43
Monmouth	10	46
Morris	29	0
Ocean	16	18
Passaic	23	20
Somerset	0	20
Sussex	10	5
Union	12	14
Warren	0	3
Pennsylvania	768	1,681
Philadelphia	248	910
All Other PA	520	771
Delaware	1,573	2,637
Maryland	117	64
New York State	70	5
New England States	N/A	60
All Other USA	N/A	127

Source: US Census

Journey To Work Commuting Patterns Salem County, 2010



Travel Time to Work Salem County Workforce Aged 16 or Older

	Travel Time In Minutes												Worked at Home
	0-4	5-9	10-14	15-19	20-24	25-29	30-34	35-39	40-44	40-59	60-89	90+	
Alloway	56	97	151	113	159	129	195	85	88	119	158	224	38
Carneys Point	180	383	515	699	437	246	357	36	80	336	144	186	101
Elmer	32	52	91	46	77	26	95	36	12	44	30	16	19
Elsinboro	7	76	58	66	31	48	40	8	8	69	14	33	19
LAC	21	101	114	102	140	31	74	21	23	82	52	57	19
Mannington	45	74	59	56	87	49	94	18	11	39	17	25	17
Oldmans	82	112	185	116	151	53	97	30	53	52	36	62	27
Penns Grove	89	329	210	510	125	112	205	23	45	86	133	60	25
Pennsville	327	781	763	792	713	427	829	174	154	396	221	115	166
Pilesgrove	49	117	176	231	225	112	309	95	122	114	101	48	154
Pittsgrove	127	421	670	566	715	375	471	204	185	502	244	116	146
Quinton	36	99	181	173	147	135	137	72	36	94	100	121	34
Salem City	157	159	208	332	120	88	107	29	44	88	222	117	0
Upper													
Pittsgrove	122	197	83	52	217	148	265	33	29	224	74	32	29
Woodstown	56	108	125	176	177	69	186	113	113	102	57	91	42
Salem County	1,386	3,106	3,589	4,030	3,521	2,048	3,461	977	1,003	2,347	1,603	1,303	836

Source: US Census - American Community Survey

VI. Housing

Salem County Housing Characteristics, 2010

	Total Housing Units	Occupancy						Housing Type													
		Total		Owner		Renter		Vacant		Single		Family*		Multiple		Units**		Mobile		Homes	
		Number	%	Number	%	Number	%	Number	%	Number	%	Number	%	Number	%	Number	%	Number	%	Number	%
Alloway	1,268	1,193	94.1%	1,061	88.9%	132	11.1%	75	6.3%	1,091	86.0%	41	3.2%	5	0.4%						
Carneys Point	3,502	3,264	93.2%	2,174	66.6%	1,090	33.4%	238	7.3%	2,352	67.2%	939	26.8%	141	4.0%						
Elmer	577	536	92.9%	364	67.9%	172	32.1%	41	7.6%	432	74.9%	135	23.4%	0	0.0%						
Elsinboro	524	455	86.8%	396	87.0%	59	13.0%	69	15.2%	503	96.0%	11	2.1%	10	1.9%						
L.A.C.	727	679	93.4%	551	81.1%	128	18.9%	48	7.1%	699	96.1%	45	6.2%	21	2.9%						
Mannington	592	540	91.2%	435	80.6%	105	19.4%	52	9.6%	549	92.7%	34	5.7%	4	0.7%						
Oldmans	699	652	93.3%	566	86.8%	86	13.2%	47	7.2%	637	91.1%	147	21.0%	2	0.3%						
Penns Grove	2,004	1,801	89.9%	696	38.6%	1,105	61.4%	203	11.3%	1,188	59.3%	946	47.2%	0	0.0%						
Pennsville	5,914	5,491	92.8%	4,060	73.9%	1,431	26.1%	423	7.7%	4,506	76.2%	1,264	21.4%	266	4.5%						
Pilesgrove	1,594	1,488	93.4%	1,218	81.9%	270	18.1%	106	7.1%	1,228	77.0%	158	9.9%	0	0.0%						
Pittsgrove	3,445	3,307	96.0%	2,980	90.1%	327	9.9%	138	4.2%	2,834	82.3%	115	3.3%	399	11.6%						
Quinton	1,099	1,036	94.3%	864	83.4%	172	16.6%	63	6.1%	989	90.0%	68	6.2%	128	11.6%						
Salem Upper Pittsgrove	2,633	2,157	81.9%	765	35.5%	1,392	64.5%	476	22.1%	1,031	39.2%	1,682	63.9%	0	0.0%						
Woodstown	1,529	1,444	94.4%	882	61.1%	562	38.9%	85	5.9%	836	54.7%	577	37.7%	6	0.4%						
Salem County	27,417	25,290	92.2%	18,091	71.5%	7,199	28.5%	2,127	8.4%	19,920	72.7%	6,197	22.6%	1,116	4.1%						

NOTE: Statistics may vary slightly due to rounding.

* - includes detached single family dwelling units only.

** - includes attached single units and structures with 2 or more dwelling units.

Source: Occupancy data from US Census and Housing Type Data from American Community Survey

Salem County Housing Statistics, 2010

Persons Per Unit in Occupied Units

Persons	Total Occupied		Owner Occupied		Renter Occupied	
	Number	Percent	Number	Percent	Number	Percent
1	6,412	25.4%	3,629	20.1%	2,783	38.7%
2	8,397	33.2%	6,588	36.4%	1,809	25.1%
3	4,365	17.3%	3,245	17.9%	1,120	15.6%
4	3,567	14.1%	2,811	15.5%	756	10.5%
5	1,637	6.5%	1,213	6.7%	424	5.9%
6	578	2.3%	391	2.2%	187	2.6%
7+	334	1.3%	214	1.2%	120	1.7%
Total	25,290	100.0%	18,091	100.0%	7,199.0	100.0%

Source: US Census 2010

Number of Rooms in All Housing Units

Rooms	Units	Percent
1	153	0.6%
2	261	1.0%
3	1,885	6.9%
4	3,402	12.5%
5	5,346	19.6%
6	5,761	21.1%
7	4,246	15.6%
8	2,948	10.8%
9+	3,291	12.1%
Total	27,293	100.0%

Source: American Community Survey

Households by Municipality

Households		Households	
Alloway	1,193	Pennsville	5,491
Carneys Point	3,264	Pilesgrove	1,488
Elmer	536	Pittsgrove	3,307
Elsinboro	455	Quinton	1,036
L.A.C.	679	Salem City	2,157
		Upper Pittsgrove	
Mannington	540	Pittsgrove	1,247
Oldmans	652	Woodstown	1,444
Penns Grove	1,801	Salem County	25,290

Source: US Census 2010

Persons per Household

PPH		PPH		PPH	
Alloway	2.84	Mannington	2.65	Pittsgrove	2.80
Carneys Point	2.36	Oldmans	2.71	Quinton	2.57
Elmer	2.60	Penns Grove	2.85	Salem City	2.36
Elsinboro	2.26	Pennsville	2.44	Upper Pittsgrove	2.73
L.A.C.	2.60	Pilesgrove	2.62	Woodstown	2.41
Salem County			2.56		

Source: US Census 2010

Council On Affordable Housing Statistics

Affordable Housing Need

For Salem County, As of October 2008

	Projected Growth Share*	1987-1999 Prior Round Obligation	Total
Alloway	37	17	54
Carneys Point	145	184	329
Elmer	5	12	17
Elsinboro	2	26	28
L.A.C.	16	26	42
Mannington	8	19	27
Oldmans	13	183	196
Penns Grove	8	4	12
Pennsville	72	228	300
Pilesgrove	18	35	53
Pittsgrove	141	58	199
Quinton	20	15	35
Salem City	19	0	19
Upper Pittsgrove	40	27	67
Woodstown	31	8	39
Salem County	575	842	1,417

*Source: New Jersey Department of Community Affairs - COAH

Note: * Projected Growth Share as taken from The Municipal Obligations and Projections prepared by the Council On Affordable Housing, effective October 2008

COAH Regional Income Guidelines

Region 6*, As of May, 2013

Household Size	Income Median	Moderate	Low	Very Low
1	\$51,086	\$40,869	\$25,543	\$15,326
1.5	\$54,735	\$43,788	\$27,367	\$16,420
2	\$58,384	\$44,707	\$29,192	\$17,515
3	\$65,682	\$52,545	\$32,841	\$19,704
4	\$72,979	\$58,384	\$36,490	\$21,894
4.5	\$75,899	\$60,719	\$37,949	\$22,770
5	\$78,818	\$63,054	\$37,409	\$23,645
6	\$84,656	\$67,725	\$42,328	\$25,328
7	\$90,495	\$72,396	\$45,247	\$27,148
8	\$96,333	\$77,066	\$48,166	\$28,900

Note: * Includes Atlantic, Cape May, Cumberland & Salem Counties

Source: New Jersey Department of Community Affairs

Value of Owner Occupied Housing Units Salem County, 2010

Value	Units	Percent
Less than \$10,000	156	0.8%
\$10,000 to \$14,999	145	0.8%
\$15,000 to \$19,999	137	0.7%
\$20,000 to \$24,999	88	0.5%
\$25,000 to \$29,999	71	0.4%
\$30,000 to \$34,000	90	0.5%
\$35,000 to \$39,999	96	0.5%
\$40,000 to \$49,000	62	0.3%
\$50,000 to \$59,999	127	0.7%
\$60,000 to \$69,999	326	1.7%
\$70,000 to \$79,999	254	1.4%
\$80,000 to \$89,999	537	2.9%
\$90,000 to \$99,999	610	3.3%
\$100,000 to \$124,999	1,386	7.4%
\$125,000 to \$149,999	1,531	8.2%
\$150,000 to \$174,999	1,989	10.7%
\$175,000 to \$199,999	1,993	10.7%
\$200,000 to \$249,999	3,010	16.1%
\$250,000 to \$299,999	1,791	9.6%
\$300,000 to \$399,999	2,566	13.8%
\$400,000 to \$499,999	853	4.6%
\$500,000 to \$749,999	593	3.2%
\$750,000 to \$999,999	181	1.0%
\$1,000,000 or more	57	0.3%
Total	18,649	100.0%

Source: American Community Survey 2006-2010 5 Year Estimate

Contract Rent for Tenant Occupied Units Salem County, 2010

Rent	Units	Percent
Less than \$100	157	2.4%
\$100 to \$149	158	2.4%
\$150 to \$199	243	3.8%
\$200 to \$249	237	3.7%
\$250 to \$299	75	1.2%
\$300 to \$349	188	2.9%
\$350 to \$399	148	2.3%
\$400 to \$449	105	1.6%
\$450 to \$499	150	2.3%
\$500 to \$549	376	5.8%
\$550 to \$599	269	4.2%
\$600 to \$649	345	5.3%
\$650 to \$699	357	5.5%
\$700 to \$749	534	8.3%
\$750 to \$799	587	9.1%
\$800 to \$899	936	14.5%
\$900 to \$999	409	6.3%
\$1,000 to \$1,249	436	6.7%
\$1,250 to \$1,499	169	2.6%
\$1,500 to \$1,999	125	1.9%
\$2,000 or more	53	0.8%
<hr/>		
With Cash Rent	6,057	93.6%
No Cash Rent	411	6.4%
<hr/>		
Total	6,468	100.0%

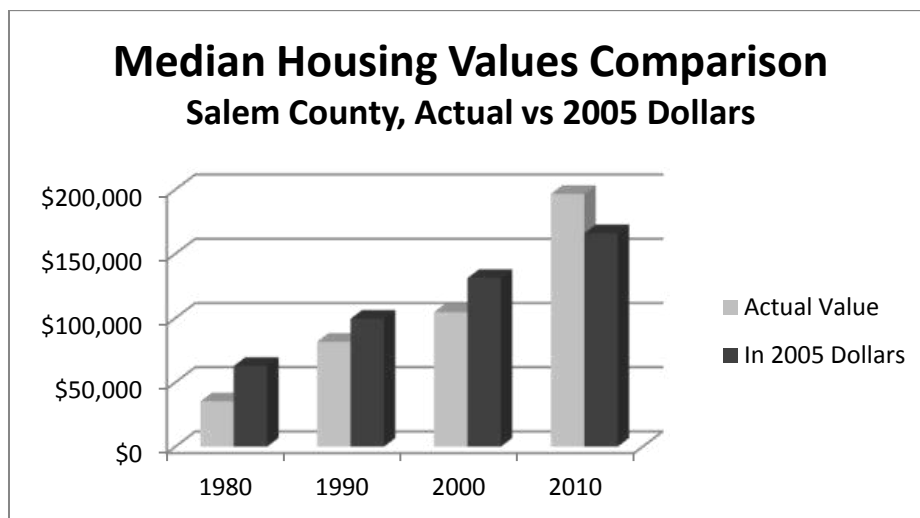
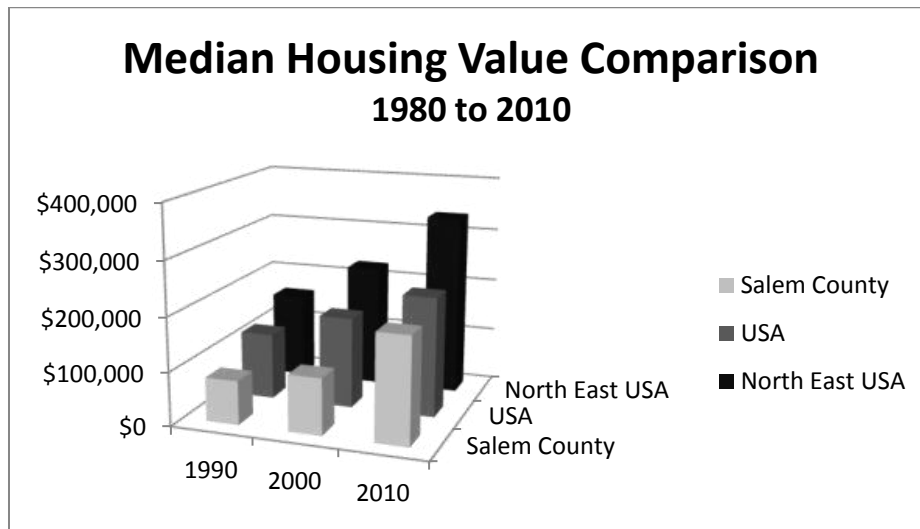
Source: American Community Survey 2006-2010 5 Year Estimates

Median Housing Values 2010

	USA	North East USA	Salem County Actual
1980	\$64,600	\$69,500	\$35,200
1990	\$122,900	\$159,000	\$81,600
2000	\$169,000	\$227,400	\$104,600
2010	\$221,900	\$335,500	\$196,600

Note: ** Values adjusted for inflation, based on CPI

Source: American Community Survey 2006-2010 and Statistical Abstract of the USA



Utility Service in Housing Units Salem County, 2010

House Heating Fuel in Occupied Units

	Units	Percent
Utility gas	9,643	38.4%
Bottled, tank or liquid propane	1,774	7.1%
Electricity	3,015	12.0%
Fuel oil, kerosene, etc.	9,911	39.5%
Coal or coke	9	0.0%
Wood	602	2.4%
Solar energy	24	0.1%
Other fuel	119	0.5%
No fuel used	20	0.1%
Total	25,117	100.0%

Mortgage Status and Monthly Cost For Owner Occupied Units Salem County, 2010

With a Mortgage

	Units	Percent
Less than \$200	0	0.0%
\$200 to \$299	6	0.1%
\$300 to \$399	17	0.1%
\$400 to \$499	42	0.4%
\$500 to \$599	91	0.8%
\$600 to \$699	153	1.3%
\$700 to \$799	122	1.0%
\$800 to \$899	325	2.7%
\$900 to \$999	448	3.8%
\$1,000 to \$1,249	1,331	11.2%
\$1,250 to \$1,499	1,933	16.3%
\$1,500 to \$1,999	3,141	26.5%
\$2,000 to \$2,499	2,155	18.2%
\$2,500 to \$2,999	1,056	8.9%
\$3,000 or more	1,030	8.7%
Total	11,850	100.0%

Median Cost \$1,700

Not Mortgaged

	Units	Percent
Less than \$100	0	0.0%
\$100 to \$149	13	0.2%
\$150 to \$199	56	0.8%
\$200 to \$249	44	0.6%
\$250 to \$299	85	1.3%
\$300 to \$349	185	2.7%
\$350 to \$399	265	3.9%
\$400 to \$499	618	9.1%
\$500 to \$599	1,169	17.2%
\$600 to \$699	1,398	20.6%
\$700 or more	2,966	43.6%
Total	6,799	100.0%

Median Cost \$669

Source: American Community Survey 2006-2010

Dwelling Units Constructed

Residential Construction Activity Authorized by Permit

Salem County, NJ 2000-2010

	TYPE	2000	2001	2002	2003	2004	2005	2006	2007	2008	2009	2010	2011	TOTAL
Alloway	TU	9	14	17	29	15	35	10	16	16	4	3	5	173
	SF	N/A	N/A	N/A	N/A	15	35	10	16	16	4	3	5	104
Carneys Point	TU	3	10	10	104	30	27	42	3	8	8	6	10	261
	SF	N/A	N/A	N/A	N/A	30	25	42	3	8	8	6	9	131
Elmer	TU	4	4	3	0	1	1	0	2	1	0	1	1	18
	SF	N/A	N/A	N/A	N/A	1	1	0	2	1	0	1	1	7
Elsinboro	TU	3	5	2	2	7	1	4	2	2	0	0	1	29
	SF	N/A	N/A	N/A	N/A	7	1	4	2	2	0	0	1	17
L.A.C.	TU	6	12	13	5	7	1	2	4	8	0	0	1	59
	SF	N/A	N/A	N/A	N/A	7	1	2	4	8	0	0	1	23
Mannington	TU	3	6	3	2	4	8	4	4	2	2	3	4	45
	SF	N/A	N/A	N/A	N/A	4	7	4	4	2	2	3	3	29
Oldmans	TU	0	2	3	6	7	3	2	2	5	1	19	13	63
	SF	N/A	N/A	N/A	N/A	6	3	2	2	5	1	15	13	47
Penns Grove	TU	0	0	0	0	0	4	1	1	2	0	0	0	8
	SF	N/A	N/A	N/A	N/A	0	4	1	1	2	0	0	0	8
Pennsville	TU	21	20	24	42	41	56	130	13	4	0	2	1	354
	SF	N/A	N/A	N/A	N/A	41	56	29	12	4	0	2	1	145
Pilesgrove	TU	23	30	28	33	106	52	16	2	9	78	3	2	382
	SF	N/A	N/A	N/A	N/A	87	52	16	2	9	3	3	2	174
Pittsgrove	TU	40	53	58	53	67	52	33	17	20	10	5	7	415
	SF	N/A	N/A	N/A	N/A	67	52	33	16	20	10	5	7	210
Quinton	TU	10	3	6	13	11	10	10	5	5	4	7	5	89
	SF	N/A	N/A	N/A	N/A	11	10	10	5	5	4	7	5	57
Salem City	TU	0	40	33	2	1	0	60	0	98	2	2	0	238
	SF	N/A	N/A	N/A	N/A	1	0	0	0	0	2	2	0	5
Upper Pittsgrove	TU	24	38	27	8	4	9	8	15	4	10	12	4	163
	SF	N/A	N/A	N/A	N/A	4	9	7	15	4	10	12	4	65
Woodstown	TU	24	46	4	3	18	19	28	29	5	61	0	0	237
	SF	N/A	N/A	N/A	N/A	13	19	26	25	3	0	0	0	86
Salem County	TU	170	283	231	302	319	278	350	115	189	180	63	54	2,534
	SF	N/A	N/A	N/A	N/A	293	275	186	109	89	44	59	52	1,107

Note: TU = Total Units
SF = 1 & 2 Family Units

Source: NJ Building Permit Summary, NJ Dept of Community Affairs

Dwelling Units Demolished

Residential Construction Activity Authorized by Permit
Salem County, NJ 2000-2010

	2000	2001	2002	2003	2004	2005	2006	2007	2008	2009	2010	2011	TOTAL
Alloway	0	0	0	1	0	0	0	0	1	1	1	0	4
Carneys Point	3	4	16	3	1	3	7	2	4	3	1	2	49
Elmer	0	1	0	0	0	0	0	1	0	0	1	0	3
Elsinboro	4	1	1	3	4	2	0	0	1	0	0	1	17
L.A.C.	0	1	1	0	2	3	0	1	0	0	0	1	9
Mannington	1	2	2	0	4	1	0	3	1	1	2	1	18
Oldmans	0	3	1	1	2	2	1	3	1	1	0	1	16
Penns Grove	0	4	0	0	0	0	1	0	0	1	1	0	7
Pennsville	11	7	3	1	6	5	6	2	4	1	2	18	66
Pilesgrove	2	3	6	3	6	4	5	2	4	8	0	1	44
Pittsgrove	3	3	1	3	1	8	1	6	12	9	4	4	55
Quinton	0	0	0	1	3	4	2	0	0	1	4	1	16
Salem City	2	1	9	0	0	46	14	15	20	19	44	4	174
Upper													
Pittsgrove	0	0	2	1	3	6	18	6	3	14	2	3	58
Woodstown	1	3	0	1	1	0	1	7	8	2	0	0	24
Salem County	27	33	42	18	33	84	56	48	59	61	62	37	560

Source: NJ Building Permits Summary, NJ Dept of Community Affairs

Total Dwelling Units Authorized by Counties: 2009-2011

Counties Ranked by Percent of State Total for 2011

	2009		2010		2011		% of CHANGE	
	Number	Percent	Number	Percent	Number	Percent	2009-2010	2010-2011
Bergen	544	4.9%	879	7.4%	1,903	16.0%	61.6%	53.8%
Hudson	1,550	13.9%	901	7.6%	1,446	12.2%	-41.9%	37.7%
Ocean	1,387	12.4%	1,768	14.9%	1,455	12.2%	27.5%	-21.5%
Middlesex	948	8.5%	1,642	13.8%	958	8.1%	73.2%	-71.4%
Monmouth	896	8.0%	806	6.8%	806	6.8%	-10.0%	0.0%
Burlington	661	5.9%	418	3.5%	546	4.6%	-36.8%	23.4%
Gloucester	740	6.6%	643	5.4%	517	4.4%	-13.1%	-24.4%
Camden	485	4.4%	332	2.8%	493	4.1%	-31.5%	32.7%
Essex	448	4.0%	419	3.5%	465	3.9%	-6.5%	9.9%
Somerset	312	2.8%	575	4.8%	469	3.9%	84.3%	-22.6%
Cape May	412	3.7%	432	3.6%	445	3.7%	4.9%	2.9%
Mercer	336	3.0%	648	5.5%	422	3.6%	92.9%	-53.6%
Morris	465	4.2%	400	3.4%	421	3.5%	-14.0%	5.0%
Atlantic	500	4.5%	444	3.7%	372	3.1%	-11.2%	-19.4%
Passaic	193	1.7%	380	3.2%	344	2.9%	96.9%	-10.5%
Union	378	3.4%	649	5.5%	347	2.9%	71.7%	-87.0%
Cumberland	242	2.2%	201	1.7%	144	1.2%	-16.9%	-39.6%
Warren	136	1.2%	93	0.8%	134	1.1%	-31.6%	30.6%
Hunterdon	226	2.0%	97	0.8%	74	0.6%	-57.1%	-31.1%
Sussex	106	1.0%	95	0.8%	67	0.6%	-10.4%	-41.8%
SALEM	180	1.6%	63	0.5%	54	0.5%	-65.0%	-16.7%
STATE	11,145	100.0%	11,885	100.0%	11,882	100.0%	6.6%	0.03%

Source: NJ Building Permits, NJ Dept of Community Affairs

Average Housing Prices, Salem County, 2009-2012

	2009 Avg. Price	2010 Avg. Price	2011 Avg. Price	2012 Avg. Price
Alloway	\$253,905	\$228,400	\$189,993	\$202,993
Carneys Point	\$164,179	\$149,248	\$175,079	\$164,665
Elmer	\$183,633	\$218,764	\$171,569	\$124,500
Elsinboro	\$157,225	\$175,444	\$238,200	\$179,600
L.A.C.	\$138,667	\$174,250	\$175,667	\$155,750
Mannington	\$143,750	\$176,563	\$208,750	\$159,133
Oldmans	\$226,420	\$175,223	\$195,500	\$194,833
Penns Grove	\$101,833	\$124,800	\$141,600	\$119,633
Pennsville	\$176,398	\$154,334	\$155,312	\$155,638
Pilesgrove	\$290,863	\$247,384	\$258,630	\$256,826
Pittsgrove	\$239,950	\$249,350	\$202,234	\$220,402
Quinton	\$213,250	\$177,800	\$172,494	\$148,000
Salem City	\$98,107	\$113,840	\$92,333	\$94,967
Upper Pittsgrove	\$219,847	\$196,663	\$234,200	\$254,325
Woodstown	\$232,440	\$205,019	\$223,382	\$208,971
Salem County	\$198,743	\$185,095	\$188,458	\$192,208

Source: New Jersey Department of Treasury

Municipal Tax Rates and Ratios

	2011		2012		Last Revaluation
	Ratio	Rate	Ratio	Rate	
Alloway	93.35	2.403	98.47	2.430	2010
Carneys Point	105.68	2.339	104.36	2.423	2009
Elmer	94.3	2.616	95.74	2.696	2006
Elsinboro	107.66	2.155	107.41	2.277	2008
L.A.C.	70.92	1.268	76.77	1.234	2004
Mannington	98.97	2.334	98.47	2.388	2006
Oldmans	96.04	2.357	100.68	2.382	2009
Penns Grove	98.69	3.515	100.87	3.595	2009
Pennsville	92.39	3.096	93.33	3.268	2010
Pilesgrove	100.26	2.336	103.71	2.336	2007
Pittsgrove	90.34	2.732	92.67	2.819	2004
Quinton	88.55	2.431	92.41	2.478	2008
Salem City	100.96	3.688	107.58	3.728	2007
Upper Pittsgrove	105.83	2.100	103.92	2.158	2006
Woodstown	99.77	2.625	101.74	2.696	2008

General County Tax, 2012: 0.92154009

Source: Salem County Board of Taxation

**VII. Estimates
and
Projections**

Population Estimates

New Jersey Department of Labor
2008 through 2012

RESIDENT POPULATION

	Census April 1, 2010	Estimate for July 1				
		2008	2009	2010	2011	2012
Alloway	3,467	3,355	3,426	3,461	3,457	*
Carneys Point	8,049	8,014	8,051	8,038	8,028	*
Elmer	1,395	1,396	1,398	1,393	1,391	*
Elsinboro	1,036	1,054	1,046	1,034	1,033	*
L.A.C.	1,770	1,786	1,782	1,767	1,764	*
Mannington	1,806	1,765	1,765	1,804	1,802	*
Oldmans	1,773	1,782	1,792	1,770	1,768	*
Penns Grove	5,147	5,115	5,145	5,141	5,132	*
Pennsville	13,409	13,415	13,441	13,391	13,371	*
Pilesgrove	4,016	4,020	4,027	4,012	4,006	*
Pittsgrove	9,393	9,336	9,389	9,380	9,367	*
Quinton	2,666	2,692	2,684	2,662	2,659	*
Salem City	5,146	5,286	5,217	5,139	5,133	*
Upper Pittsgrove	3,505	3,504	3,513	3,502	3,495	*
Woodstown	3,505	3,454	3,491	3,502	3,456	*
Salem County	66,083	65,974	66,183	65,996	65,902	65,774
% Of 2010 Census		99.84%	100.15%	99.87%	99.73%	99.53%
% Change from previous July			0.32%	-0.28%	-0.14%	-0.19%

POPULATION AGED 65+

Salem County	9,917	9,578	9,750	9,925	9,977	*
% Of 2010 Census		96.58%	96.58%	100.08%	100.61%	*
% Change from previous July			1.76%	1.76%	0.52%	*

GROUP QUARTERS POPULATION **

Salem County	1,257	1,511	1,437	1,186	1,192	*
% Of 2010 Census		120.21%	114.32%	94.35%	94.83%	*
% Change from previous July			-4.90%	-17.46%	0.51%	*

Note: * = Not Available

** = Source: US Census, American Community Survey, 3 Year Estimates

Source: NJ Department of Labor

Population Estimates: Components of Change

Salem County Resident Population

Period	Total Change	Births	Deaths	Net Migration International	Domestic
April 1, 2010 to July 1, 2012	-309	1,672	1,586	131	-547
July 1, 2011 to July 1, 2012	-324	739	723	60	-404

Source: US Census 2012 Population Estimates

Alternate Population Projections For Salem County 2010 through 2030

	Population from Census			Population Change			Projected Increase:
	1990	2000	2010	2000-2010	1990-2010	2010 to 2030	
Alloway	2,795	2,774	3,467	693	672	832	
Carneys Point	8,443	7,684	8,049	365	-394	*	
Elmer	1,571	1,384	1,395	11	-176	*	
Elsinboro	1,170	1,092	1,036	-56	-134	*	
L.A.C.	1,858	1,851	1,770	-81	-88	*	
Mannington	1,693	1,559	1,806	247	113	126	
Oldmans	1,683	1,798	1,773	-25	90	89	
Penns Grove	5,228	4,886	5,147	261	-81	565	
Pennsville	13,794	13,194	13,409	215	-385	442	
Pilesgrove	3,250	3,923	4,016	93	766	964	
Pittsgrove	8,121	8,893	9,393	500	1,272	1503	
Quinton	2,511	2,786	2,666	-120	155	160	
Salem City	6,883	5,857	5,146	-711	-1,737	*	
Upper Pittsgrove	3,140	3,468	3,505	37	365	421	
Woodstown	3,154	3,136	3,505	369	351	386	
Subtotal for municipalities showing an increase in population -						5,488	
Subtotal for municipalities showing a decrease in population (*) -						-2,550	
County Total:	65,294	64,285	66,083	1,798	789	2,938	
Projected County population for the year 2030:						69,021	

NOTES:

Salem County Planning Department Projection Methodology:

Based on twenty year trend, using the rate of increase that occurred in the municipality from 1990 to 2010. Therefore if a township's population increased by 10% from 1990 to 2010, it is assumed that this same rate of increase will occur in the period from 2010 to 2030 (0.10 x the 1990 population). The projections are extended through the year 2030.

(*) - No increase projected utilizing this projection methodology. The total reduction for those municipalities with a projected loss in population (shown in row above County total) must be subtracted from the population subtotal for those municipalities showing an increase in population to determine net gain in population for each of the projection methodologies.

Employment Projections

Salem County Municipalities

2010 through 2040

	2010 (est.)	Total	SJTPO 2040	
			Change	Percent
Alloway	524	659	135	25.76%
Carneys Point	3,022	4,562	1,540	50.96%
Elmer	1,594	2,005	411	25.78%
Elsinboro	152	226	74	48.68%
L.A.C.	978	1,454	476	48.67%
Mannington	1,428	2,124	696	48.74%
Oldmans	525	660	135	25.71%
Penns Grove	1,119	1,407	288	25.74%
Pennsville	3,526	4,497	971	27.54%
Pilesgrove	1,500	2,231	731	48.73%
Pittsgrove	1,685	2,119	434	25.76%
Quinton	291	433	142	48.80%
Salem City	3,164	3,979	815	25.76%
Upper Pittsgrove	688	865	177	25.73%
Woodstown	1,886	2,804	918	48.67%
Salem County	22,082	30,025	7,943	35.97%

Source: South Jersey Transportation Organization, Regional Transportation Plan 2040